

Conditions

Column: ACE 3 C18
Dimensions: 150 x 4.6 mm
Part Number: ACE-111-1546
Mobile Phase: A: 0.1% formic acid in H₂O
 B: 0.1% formic acid in MeOH
Gradient:

Time (mins)	%B
0	0
20	100
45	100

Flow Rate: 1 mL/min
Injection: 100 µL
Temperature: 45 °C
Detection: Split ratio: 75% ESI-MS: 25% ICP-MS
 Thermo Scientific Element 2 ICP-MS
 Mode: Organic mode
 Medium resolution
 Thermo Scientific Orbitrap Discovery
 Positive ESI mode
 Spray voltage: 4.5 kV
 Capillary temperature: 320 °C
 Capillary voltage: 42 V



Alaria esculenta is an edible seaweed. It is a traditional food found along the coasts of the far north Atlantic Ocean.

Arsenic-containing hydrocarbon:

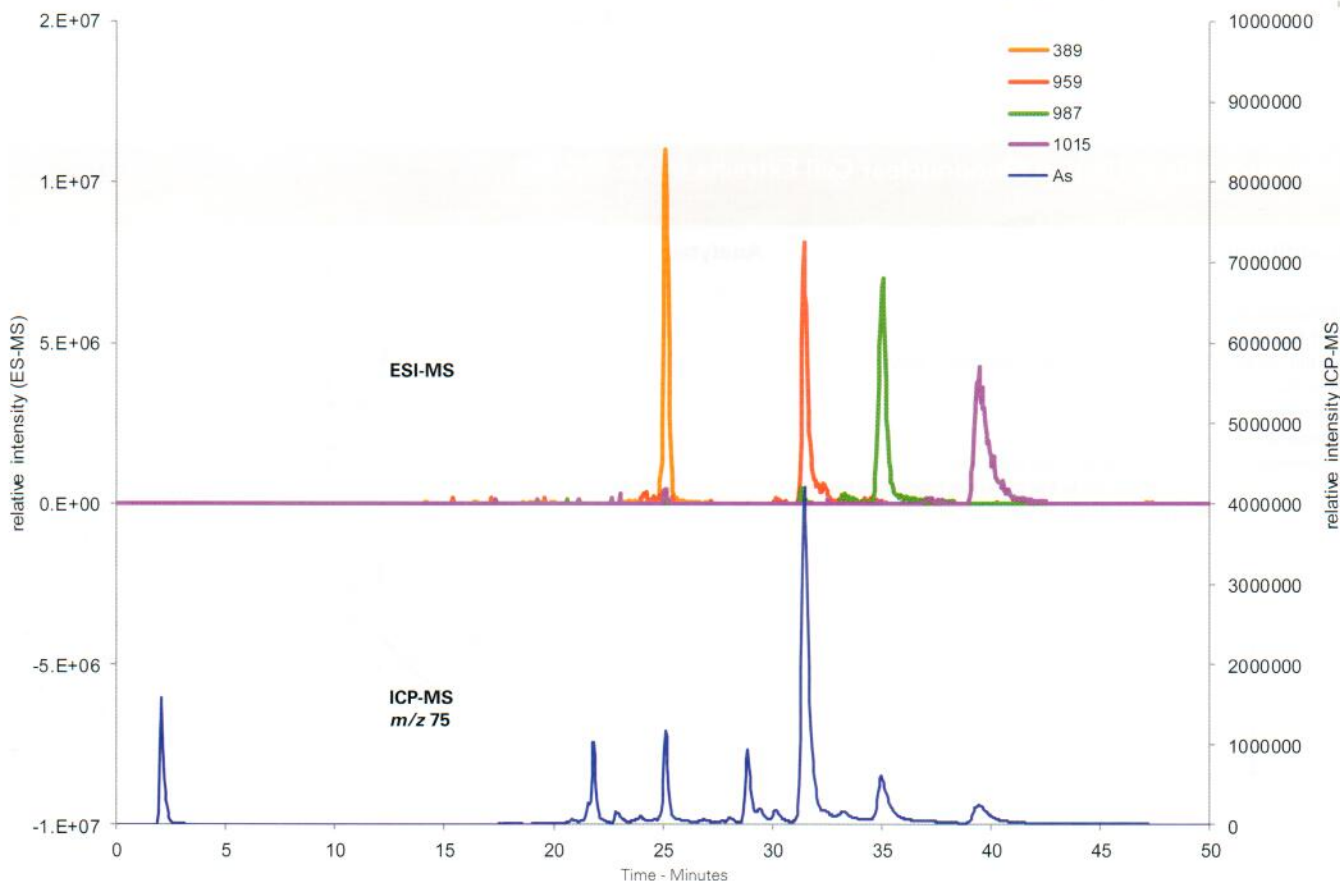
m/z 389 [M + H]⁺ for C₂₁H₄₆AsO

Arsenic-containing phospholipids:

m/z 959 [M + H]⁺ for C₄₅H₈₉AsO₁₄P (C16:0/C16:0)

m/z 987 [M + H]⁺ for C₄₇H₉₃AsO₁₄P (C18:0/C16:0)

m/z 1015 [M + H]⁺ for C₄₉H₉₇AsO₁₄P (C20:0/C16:0)



Reproduced with permission of Trace Element Speciation Laboratory, University of Aberdeen, UK

Available from



LCC Engineering & Trading GmbH
 Steinbruchstrasse 4, CH-4622 Egerkingen, Switzerland
 Tel.: +41 62 398 5271, Fax.: +41 62 398 5274
info@chemsupply.ch
www.chromatographyshop.com

ifo@ace-hplc.com