

Galanthamine

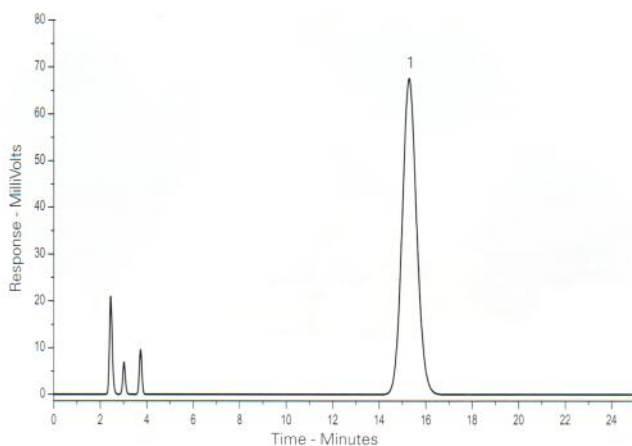
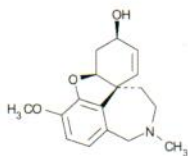
Application #AN3640

Conditions

Column: ACE 5 C18
Dimensions: 250 x 4.6 mm
Part Number: ACE-121-2546
Mobile Phase: 0.1% TFA/MeCN (92:8 v/v)
Flow Rate: 1 mL/min
Injection: 10 µL
Temperature: 20 °C
Detection: UV, 210 nm

Analyte

1. Galanthamine



Reproduced with permission of Neem Biotech, Cardiff, UK

Gamma Hydroxybutyric Acid (GHB) and Gamma Butyrolactone (GBL) Separation

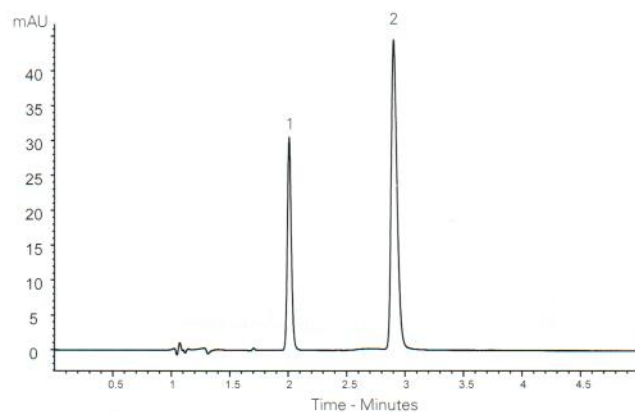
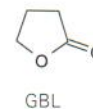
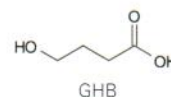
Application #AN1500

Conditions

Column: ACE Excel 2 C18-AR
Dimensions: 100 x 3.0 mm
Part Number: EXL-109-1003U
Mobile Phase: 20 mM KH₂PO₄ pH 2.5 in H₂O/MeCN (98:2 v/v)
Flow Rate: 0.43 mL/min
Injection: 2 µL
Temperature: 30 °C
Detection: UV, 215 nm

Analytes

1. GHB
 2. GBL



Garlic Analysis (I)

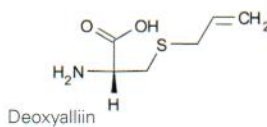
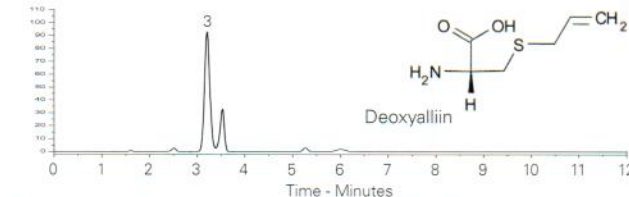
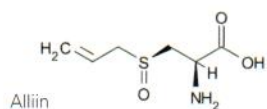
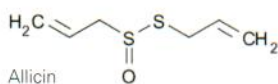
Application #AN2820

Conditions

Column: ACE 5 C18
Dimensions: 250 x 4.6 mm
Part Number: ACE-121-2546
Mobile Phase: H₂O/MeOH (50:50 v/v)
Flow Rate: 1 mL/min
Injection: 20 µL
Temperature: 30 °C
Detection: UV, 210 nm

Analytes

1. Allicin
 2. Alliin
 3. Deoxyalliin



Reproduced with permission of Neem Biotech, Cardiff, UK

Garlic Analysis (II)

Application #AN2830

Conditions

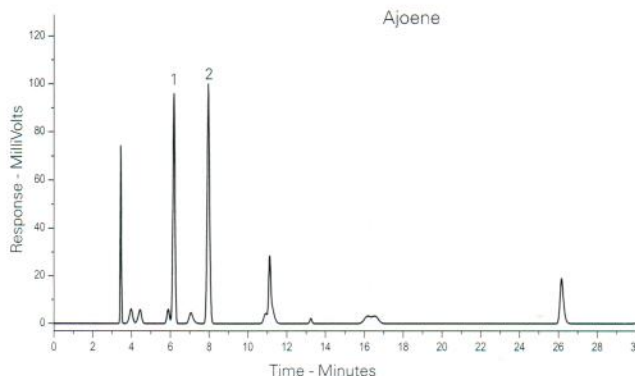
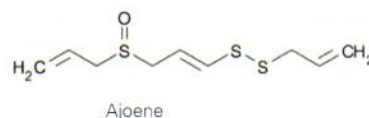
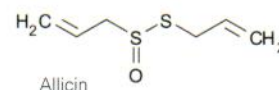
Column: ACE 5 C18
Dimensions: 250 x 4.6 mm
Part Number: ACE-121-2546
Mobile Phase: A: H₂O
 B: MeCN
Gradient:

Time (mins)	%B
0	40
20	100
25	100

Flow Rate: 1 mL/min
Injection: 20 µL
Temperature: 30 °C
Detection: UV, 254 nm

Analytes

1. Allicin
 2. Ajoene



Reproduced with permission of Neem Biotech, Cardiff, UK