

Ochratoxin A

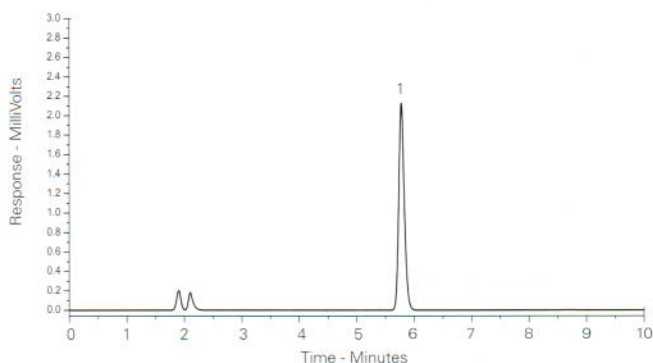
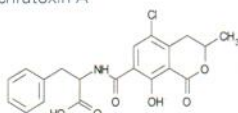
Application #AN2870

Conditions

Column: ACE 5 C18
Dimensions: 150 x 4.6 mm
Part Number: ACE-121-1546
Mobile Phase: MeCN/H₂O/Acetic acid (51:47:2 v/v/v)
Flow Rate: 1 mL/min
Temperature: Ambient
Detection: Fluorescence – λ_{ex} 333 nm, λ_{em} 443 nm

Analyte

1. Ochratoxin A



Reproduced with permission of R-Biopharm Rhone Ltd, Glasgow, UK

Olanzapine in Human Plasma by LC-MS/MS

Application #AN2520

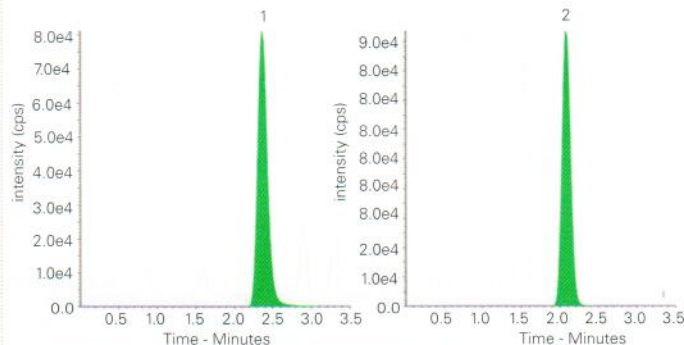
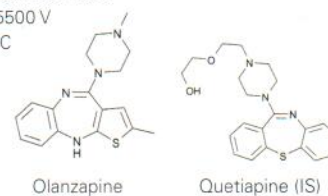
Conditions

Column: ACE 5 C18-300
Dimensions: 100 x 4.6 mm
Part Number: ACE-221-1046
Mobile Phase: MeCN/0.01% ammonia in 2 mM ammonium formate pH 6.6 (85:15 v/v)
Flow Rate: 0.9 mL/min
Injection: 5 μ L
Detection: API 4000 triple quad MS
 Turbo Ion Spray in positive mode
 Ion spray voltage: 5500 V
 Temperature: 550 °C

Analytes

1. Olanzapine
 (m/z 313.2 \rightarrow 256.2)
 2. Quetiapine (IS)
 (m/z 384.2 \rightarrow 253.2)

MRM chromatograms of plasma sample after administration of 5 mg dose of olanzapine



Reproduced with permission of Department of Chemistry, School of Sciences, Gujarat University, India

Omeprazole and Degradation Products after Acidic Hydrolysis in 0.1 M HCl

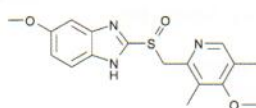
Application #AN1560

Conditions

Column: ACE Excel 5 SuperC18
Dimensions: 150 x 4.6 mm
Part Number: EXL-1211-1546U
Mobile Phase: A: 0.1% ammonia in H₂O
 B: 0.1% ammonia in MeCN/H₂O (90:10 v/v)

Analyte

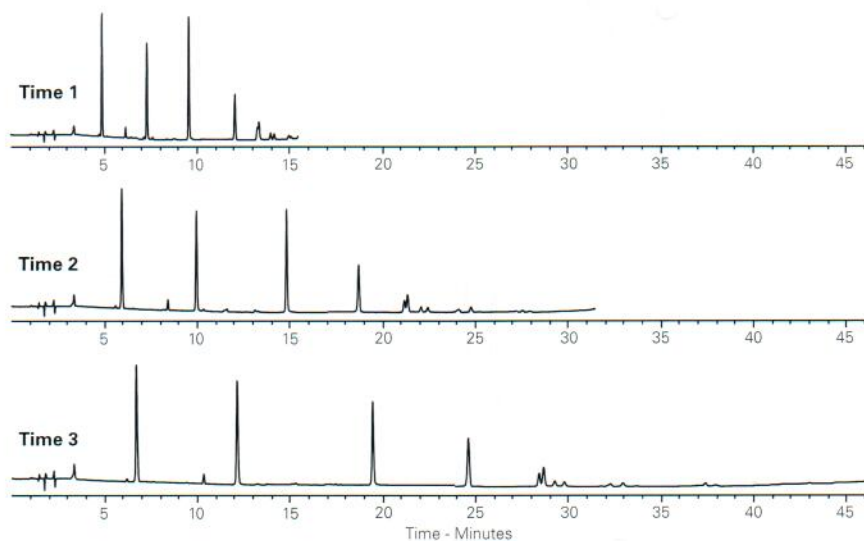
Omeprazole



Gradient:	Time 1 (mins)	Time 2 (mins)	Time 3 (mins)	%B
	0.0	0.0	0.0	10
	15.0	30.0	45.0	90
	15.5	30.5	45.5	90
	18.0	33.0	48.0	10

Post time 10 minutes

Flow Rate: 1 mL/min
Injection: 5 μ L
Temperature: 30 °C
Detection: UV, 280 nm



Available from



LCC Engineering & Trading GmbH

Steinbruchstrasse 4, CH-4622 Egerkingen, Switzerland

Tel.: +41 62 398 5271, Fax.: +41 62 398 5274

info@chemsupply.ch

www.chromatographyshop.com