

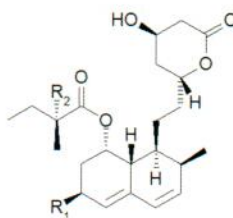
Conditions

Column: ACE Excel 3 SuperC18
Dimensions: 100 x 3.0 mm
Part Number: EXL-1111-1003U
Mobile Phase: A: MeCN
 B: 5 mM ammonium acetate pH 4.5 in H₂O
 A/B (I) 73:27 v/v (II) 55:45 v/v
Flow Rate: (I) 0.4 mL/min (II) 0.3 mL/min
Injection: 20 µL
Temperature: 40 °C
Detection: UV, 238 nm

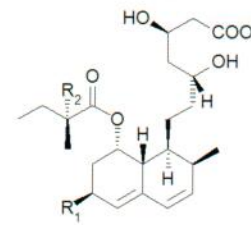
Analytes

1. Simvastatin hydroxy acid
2. 4,4-Dichlorodiphenyl trichloroethane (I.S.)
3. Simvastatin lactone
4. Pravastatin hydroxy acid
5. Griseofulvin (I.S.)
6. Pravastatin lactone

Simvastatin: R₁, R₂ = CH₃
Pravastatin: R₁ = OH, R₂ = H

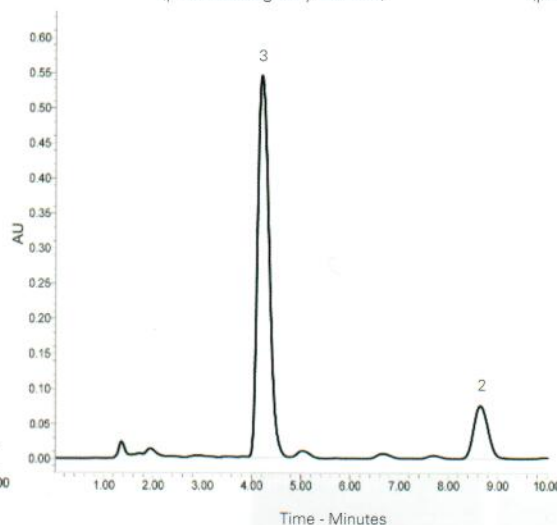
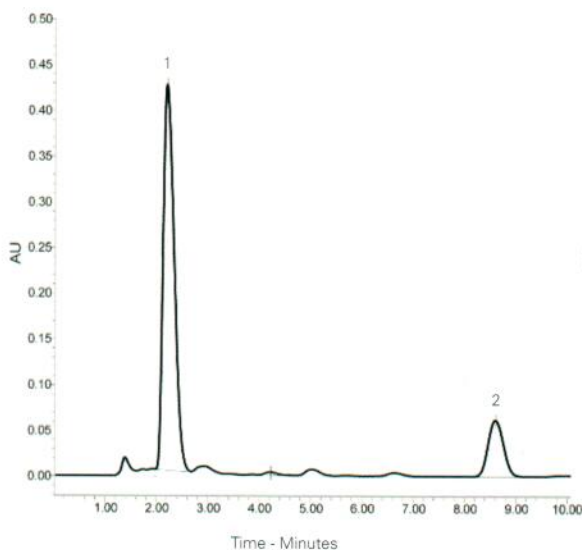


Lactone form
(pharmacologically inactive)

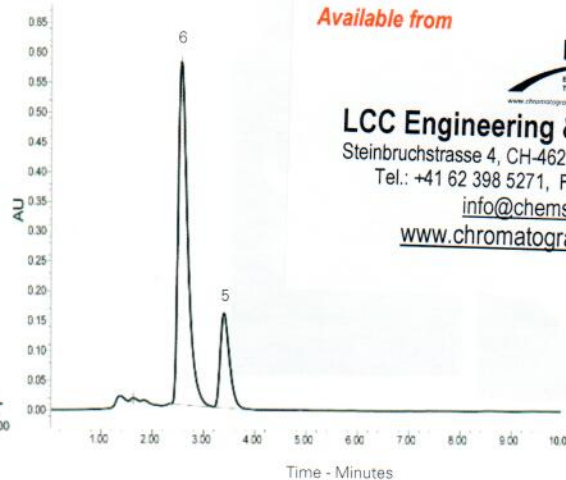
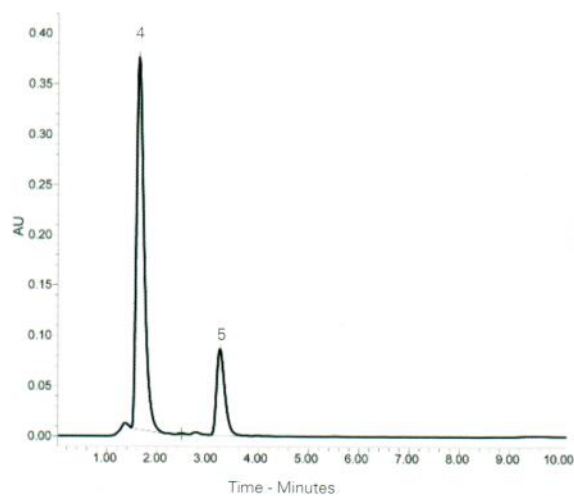


Hydroxy acid form
(pharmacologically active)

Conditions (I)



Conditions (II)



Available from



LCC Engineering & Trading GmbH
 Steinbruchstrasse 4, CH-4622 Egerkingen, Switzerland
 Tel.: +41 62 398 5271, Fax.: +41 62 398 5274
info@chemsupply.ch
www.chromatographyshop.com

Taha DA, de Moor CH, Barrett DA, Lee JB, Gandhi RD, Hoo CW, Gershkovich P, (2016). The role of acid-base imbalance in statin-induced myotoxicity. Translational Research, The Journal of Laboratory and Clinical Medicine. <http://dx.doi.org/10.1016/j.trsl.2016.03.015>