

Conditions

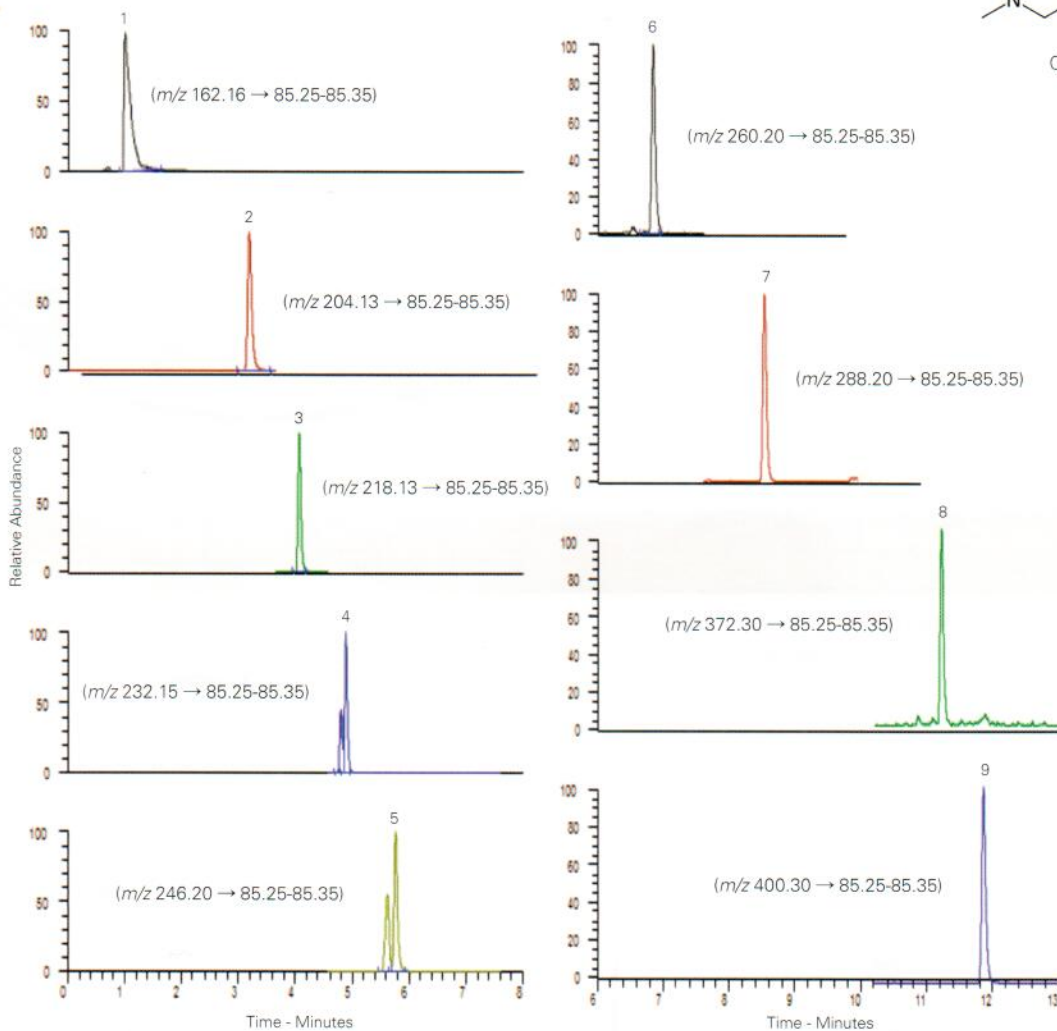
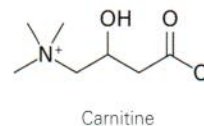
Column: ACE Excel 2 C18-PFP
Dimensions: 100 x 2.1 mm
Part Number: EXL-1010-1002U
Mobile Phase: A: 0.1% formic acid in H₂O
 B: 0.1% formic acid in MeOH
Gradient:

Time (mins)	%B
0.0	0.5
0.5	0.5
9.0	90.0
13.0	90.0

Flow Rate: 0.3 mL/min
Sample: Dried serum extract
Detection: Positive mode ESI

Analytes

1. Carnitine
2. Acetylcarnitine
3. Propionylcarnitine
4. Butyrylcarnitine & Isobutyrylcarnitine
5. Isovalerylcarnitine & 2-Methylbutyrylcarnitine
6. Hexanoylcarnitine
7. Octanoylcarnitine
8. Myristoylcarnitine
9. Palmitoylcarnitine



Reproduced with permission of Department of Pathology, Immunology and Laboratory Medicine, University of Florida, USA



Available from



LCC Engineering & Trading GmbH

Steinbruchstrasse 4, CH-4622 Egerkingen, Switzerland

Tel.: +41 62 398 5271, Fax.: +41 62 398 5274

info@chemsupply.ch

www.chromatographyshop.com