

Conditions

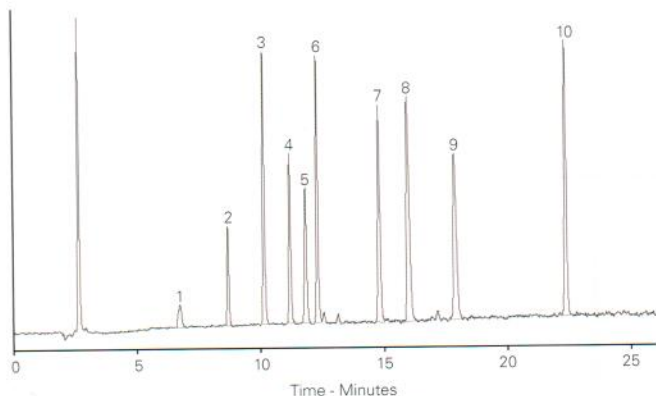
Column: ACE 5 C18
Dimensions: 250 x 4.0 mm
Part Number: ACE-121-2504
Mobile Phase: A: H₂O
 B: MeCN
 C: 1% TFA in H₂O
Gradient:

Time (mins)	%A	%B	%C
0	88	2	10
25	50	40	10
30	30	60	10
35	88	2	10

Flow Rate: 1.0 mL/min
Temperature: 30 °C
Detection: ELSD

Analytes

1. Acesulfame K
2. Theobromine
3. Theophylline
4. Cyclamate
5. Saccharin
6. Caffeine
7. Sucralose
8. Quinine sulphate
9. Aspartame
10. Neohesperidin dihydrochalcone



Reproduced with permission of Durham County Council, UK

Available from

application receive



LCC Engineering & Trading GmbH

Steinbruchstrasse 4, CH-4622 Egerkingen, Switzerland
 Tel.: +41 62 398 5271, Fax.: +41 62 398 5274

info@chemsupply.ch

www.chromatographyshop.com

Colleagu
 select your application for future
 publications we'll send you a
 FREE ACE analytical column of
 your choice.

To submit your application:
 email us at info@ace-hplc.com



Alcohol Biomarkers by UHPLC-MS/MS

Application #AN1910

Conditions

Column: ACE Excel 1.7 C18
Dimensions: 100 x 2.1 mm
Part Number: EXL-171-1002U
Mobile Phase: A: 1 mM ammonium fluoride
 B: MeCN
Gradient:

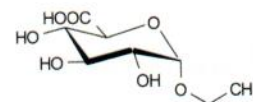
Time (mins)	%B
0.0	0
0.5	20
1.5	20
2.0	100
4.0	100
4.5	0

Flow Rate: 0.4 mL/min
Injection: 1 µL
Temperature: 40 °C
Detection: AB SCIEX triple quad 5500
 Negative ESI MRM
 Source temperature: 750 °C
 IonSpray voltage: -4500 V

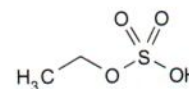
Fluoride counterion thought to
 enhance negative ESI response
 Detection limit ~ 1 ng/mL in oral fluid

Analytes

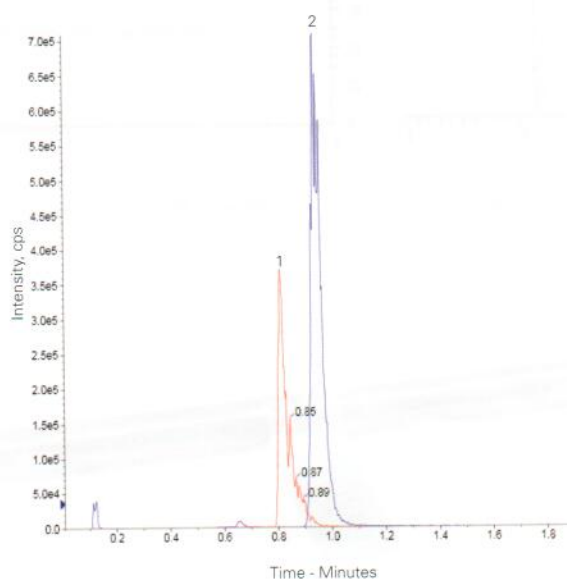
1. Ethyl glucuronide (EtG)
2. Ethyl sulphate (EtS)



Ethyl glucuronide (EtG)



Ethyl sulphate (EtS)



Transitions

Quantifiers
 EtS m/z 124.8 → 79.9
 EtG m/z 221 → 85

Qualifiers
 EtS m/z 124.8 → 97
 EtG m/z 221 → 75

Reproduced with permission of Biotage GB Ltd, UK