

Conditions

Column: ACE Excel 2 C18
Dimensions: 50 x 2.1 mm
Part Number: EXL-101-0502U
Mobile Phase: A: 2 mM ammonium acetate, 0.1% formic acid in H₂O
 B: 2 mM ammonium acetate, 0.1% formic acid in MeOH

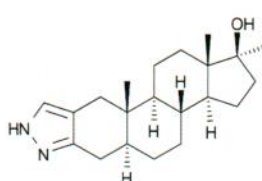
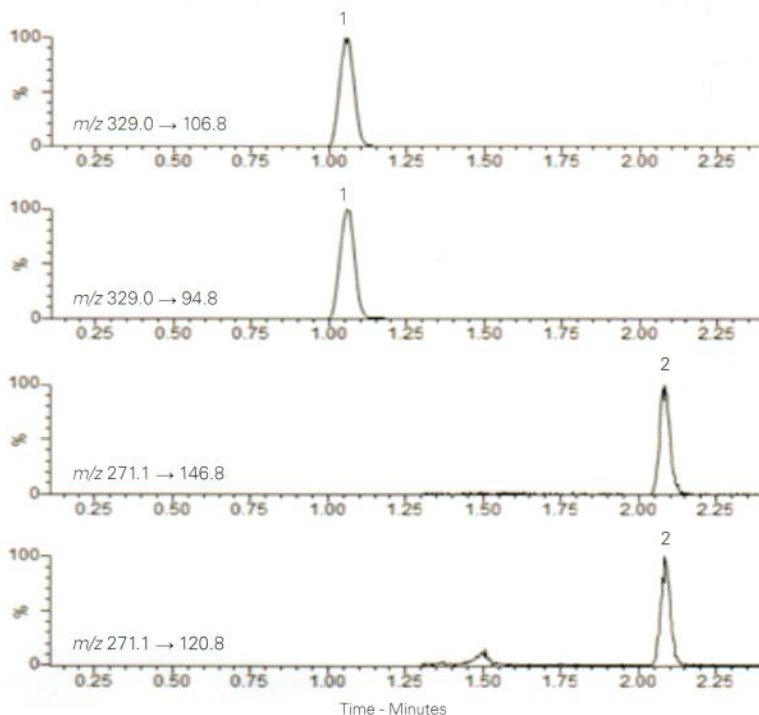
Gradient:

Time (mins)	%B
0.00	75
0.25	75
1.50	90
1.51	100
3.50	100
3.51	75
4.00	75

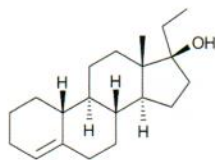
Flow Rate: 0.4 mL/min
Injection: 10 µL
Temperature: 40 °C
Detection: Premier XE triple quad MS
 MRM positive ion mode
 Desolvation temperature: 450 °C
 Ion Source temperature: 120 °C

Analytes

1. Stanozolol
2. Ethylestrenol



Stanozolol



Ethylestrenol

Reproduced with permission of Biotage GB, Ltd. For extraction conditions see Biotage Application Note AN843

Analgesic Rapid Separation

Conditions

Column: ACE Excel 2 SuperC18
Dimensions: 50 x 2.1 mm
Part Number: EXL-1011-0502U
Mobile Phase: A: 0.1% formic acid in H₂O
 B: 0.1% formic acid in MeCN

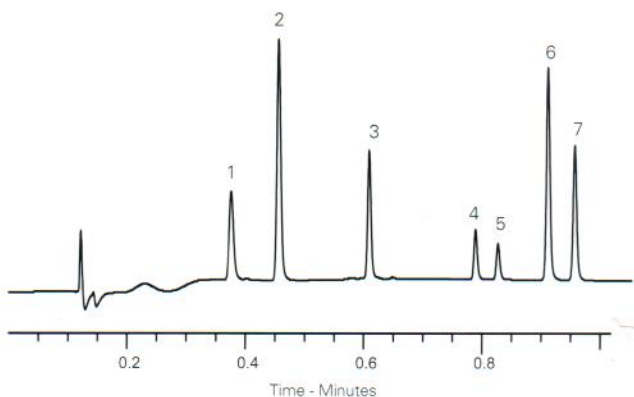
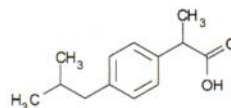
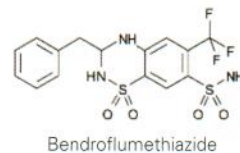
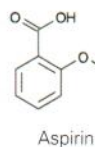
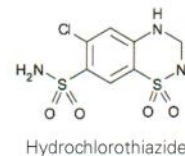
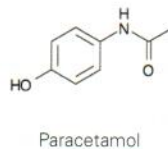
Gradient:

Time (mins)	%B
0.0	5
1.0	100
1.5	100
1.6	5
3.1	5

Flow Rate: 1.2 mL/min
Injection: 0.5 µL
Temperature: 50 °C
Detection: UV, 214 nm

Analytes

1. Paracetamol
2. Hydrochlorothiazide
3. Aspirin
4. Bendroflumethiazide
5. Ketoprofen
6. Flurbiprofen
7. Ibuprofen



LCC Engineering & Trading GmbH
 Steinbruchstrasse 4, CH-4622 Egerkingen, Switzerland
 Tel.: +41 62 398 5271, Fax.: +41 62 398 5274
info@chemsupply.ch
www.chromatographyshop.com