

Conditions

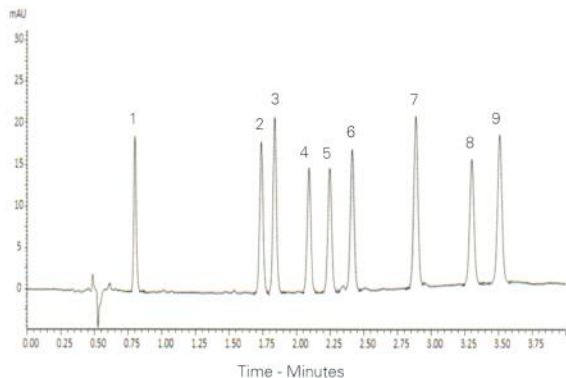
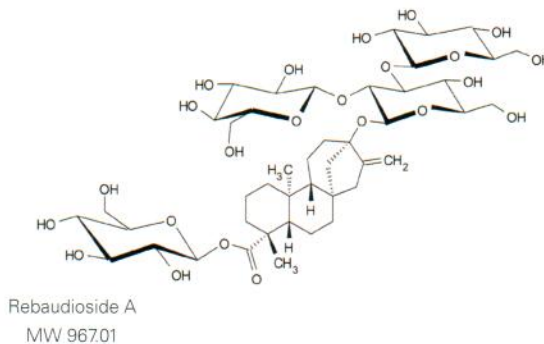
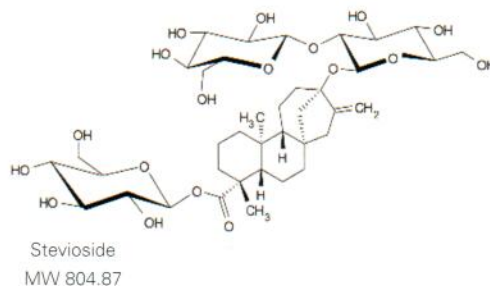
Column: ACE Excel 2 SuperC18
Dimensions: 150 x 2.1 mm
Part Number: EXL-1011-1502U
Mobile Phase: A: 10 mM sodium dihydrogen phosphate pH 2.8 in H₂O
 B: 10 mM sodium dihydrogen phosphate pH 2.8 in H₂O/MeCN (20:80 v/v)
Gradient:

Time (mins)	%B
0	39.5
4	48.0

Flow Rate: 0.6 mL/min
Injection: 1 µL
Temperature: 50 °C
Detection: UV, 200 nm

Analytes

1. Rebaudioside D
2. Rebaudioside A
3. Stevioside
4. Rebaudioside F
5. Rebaudioside C
6. Dulcoside A
7. Rubusoside
8. Rebaudioside B
9. Steviolbioside



Reproduced with permission of Shimadzu Europe GmbH. Analysed on Shimadzu Nexera X2. <http://images2.advanstar.com/PixelMags/lcgc-eu/pdf/2013-10-sp.pdf>

Aspirin and Related Substances (I)

Conditions

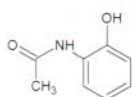
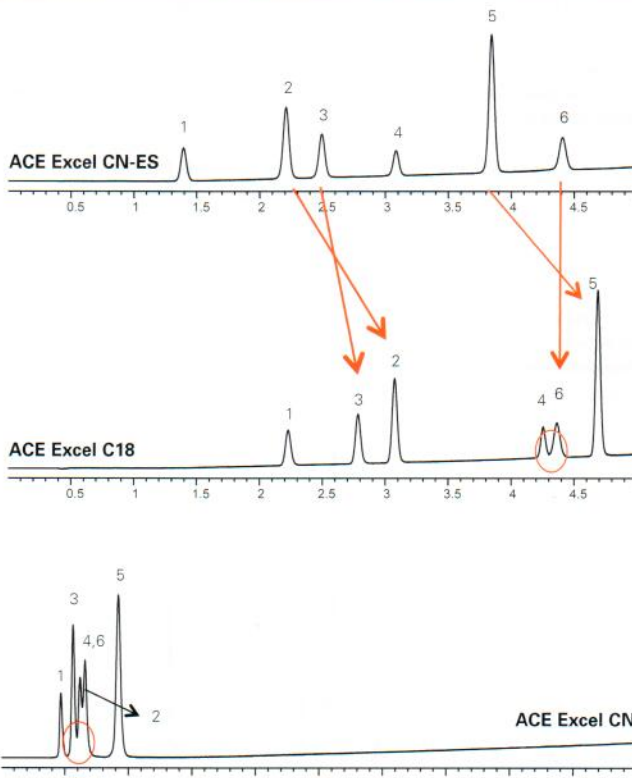
Column: ACE Excel 3 CN-ES
 ACE Excel 3 C18
 ACE Excel 3 CN
Dimensions: 50 x 2.1 mm
Part Numbers: EXL-1113-0502U,
 EXL-111-0502U,
 EXL-114-0502U
Mobile Phase: A: 0.1% formic acid in H₂O
 B: 0.1% formic acid in MeOH
Gradient:

Time (mins)	%B
0.00	5
3.75	38
5.00	38

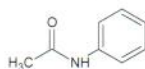
Flow Rate: 0.6 mL/min
Temperature: 40 °C
Detection: UV, 240 nm

Analytes

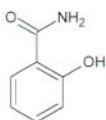
1. 2-Acetamidophenol
2. Acetanilide
3. Salicylamide
4. Aspirin
5. Phenacetin
6. Salicylic acid



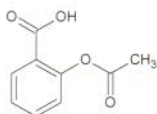
2-Acetamidophenol



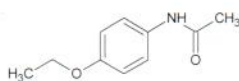
Acetanilide



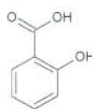
Salicylamide



Aspirin



Phenacetin



Salicylic acid

42 Available from



info

LCC Engineering & Trading GmbH
 Steinbruchstrasse 4, CH-4622 Egerkingen, Switzerland
 Tel.: +41 62 398 5271, Fax.: +41 62 398 5274
info@chemsupply.ch
www.chromatographyshop.com