

Artemisinin

Application #AN3140

Conditions

Column: ACE 5 C18
Dimensions: 250 x 4.6 mm
Part Number: ACE-121-2546
Mobile Phase: A: H₂O
 B: MeOH

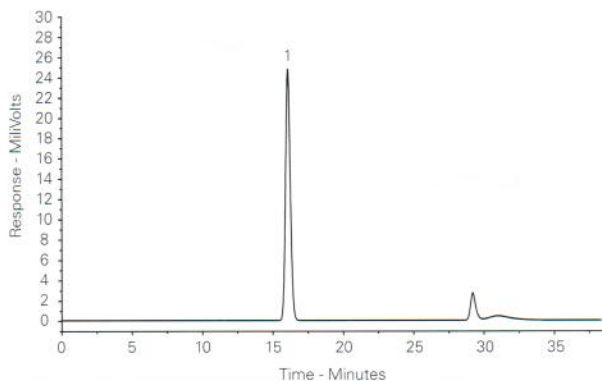
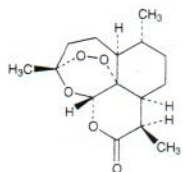
Gradient:

Time (mins)	%B
0	50
25	100
35	100

Flow Rate: 1.0 mL/min
Injection: 20 µL
Temperature: 20 °C
Detection: ELSD

Analyte

1. Artemisinin



Reproduced with permission of Neem Biotech, Cardiff, UK

Artificial Food Colours

Application #AN2960

Conditions

Column: ACE 3 C18
Dimensions: 100 x 4.6 mm
Part Number: ACE-111-1046
Mobile Phase: A: 3.1 mM TBAB¹ and 5 mM
 KH₂PO₄ in H₂O
 B: 5 mM KH₂PO₄ in MeOH

Gradient:

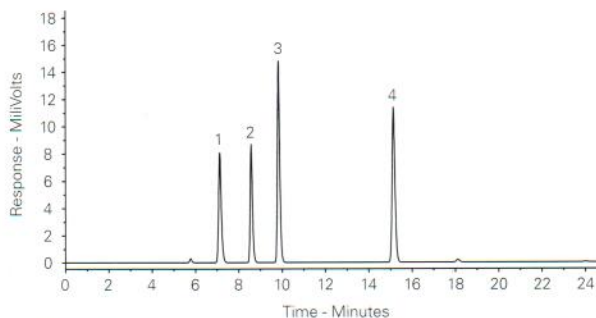
Time (mins)	%B
0	45
12	60
25	45

Flow Rate: 0.8 mL/min
Injection: 10 µL
Temperature: Ambient
Detection: UV-VIS, 480 nm

¹ Tetrabutylammonium bromide

Analytes

1. Tartrazine
 2. Amaranth
 3. Sunset Yellow
 4. Ponceau 4R



Reproduced with permission of Lincolne Sutton & Wood, Norwich, UK

Artificial Sweeteners Global Method

Application #AN1980

Conditions

Column: ACE 5 C18
Dimensions: 250 x 4.6 mm
Part Number: ACE-121-2546
Mobile Phase: A: H₂O
 B: MeCN
 C: 0.1% TFA

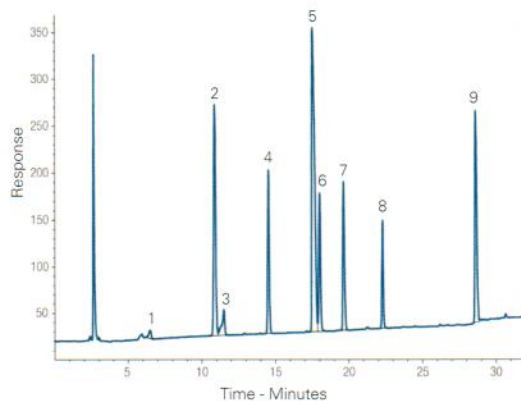
Gradient:

Time (mins)	%A	%B	%C
0	88	2	10
25	50	40	10
30	30	60	10
35	88	2	10

Flow Rate: 1 mL/min
Injection: 50 µL
Temperature: 30 °C
Detection: Corona CAD

Analytes

1. Acesulfame K
 2. Cyclamate
 3. Saccharin
 4. Sucralose
 5. Aspartame
 6. Neotame
 7. Alitame
 8. Neohesperidin
 dihydrochalcone
 9. Dulcin



Reproduced with permission of Durham County Council Scientific Services, UK

Please enquire for details

Available from



LCC Engineering & Trading GmbH

Steinbruchstrasse 4, CH-4622 Egerkingen, Switzerland

Tel.: +41 62 398 5271, Fax.: +41 62 398 5274

info@chemsupply.ch

www.chromatographyshop.com