

Conditions

Column: ACE 5 C18
Dimensions: 100 x 4.6 mm
Part Number: ACE-121-1046
Mobile Phase: A: 0.1% formic acid in H₂O
 B: 0.1% formic acid in MeCN
Gradient:

Time (mins)	%B
0	30
6	45
10	60
14	75
18	90
22	100
47	100
52	30
58	30

Flow Rate: 0.3 mL/min

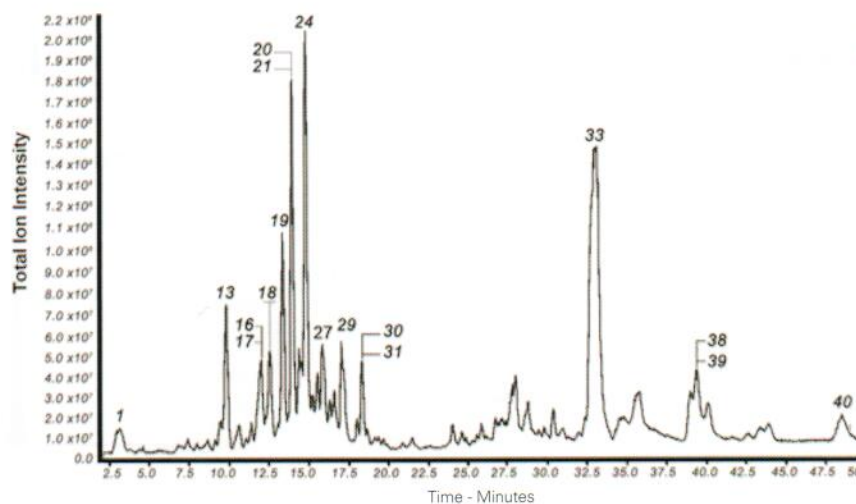
Injection: 10 µL

Detection: Thermo Scientific LC-Orbitrap FTMS
 Negative ion mode
 Scan range 50-1200 amu

Sample: Ethanolic extract of red propolis

Analytes

- | | |
|---|--|
| 1. Caffeic acid | 29. 3',4'-di-O-benzyl-7-O-(2-hydroxyethyl)-3-O-methylquercetin |
| 13. Liquiritigenin | 30/31. (3S)-7-O-methylvestitol/Calycosin/7,3'-dihydroxy-4'-methoxy-8-methylflavane |
| 16/17. Naringenin/Pinobanksin | 33. Cycloartenol/α-amyrin/β-amyrin |
| 19. Isoliquiritigenin | 38/39. Guttiferone C/Guttiferone D |
| 20/21. Formononetin/isofomononetin | 40. 19-nor-10-keto-25-hydroxyvitamin D3 |
| 24. Vestitol | |
| 27. 2',6'-dihydroxy-4'-methoxydihydrochalcone | |



Reference: de Mendonca et al, BMC Complement Altern Med. 2015; 15: 357. Published online 2015 Oct 14, doi:10.1186/s12906-015-0888-9

Brompheniramine Maleate

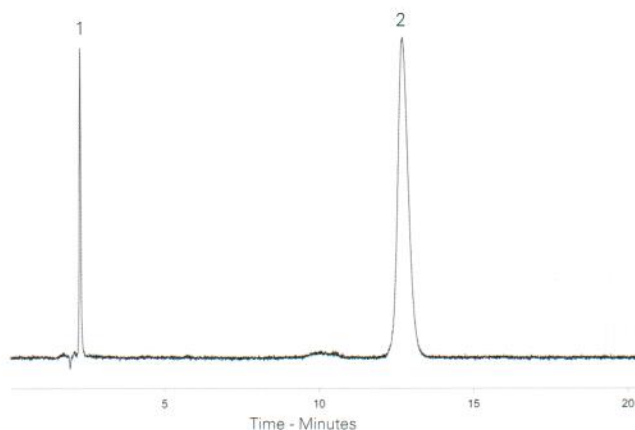
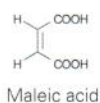
Application #AN3150

Conditions

Column: ACE 5 CN
Dimensions: 150 x 4.6 mm
Part Number: ACE-124-1546
Mobile Phase: 20 mM ammonium formate
 pH 3.0 in H₂O/MeOH (95:5 v/v)
Flow Rate: 1.0 mL/min
Injection: 20 µL
Temperature: Ambient
Detection: UV, 265 nm

Analytes

1. Maleic acid
2. Brompheniramine



BSA Tryptic Digest Profiling

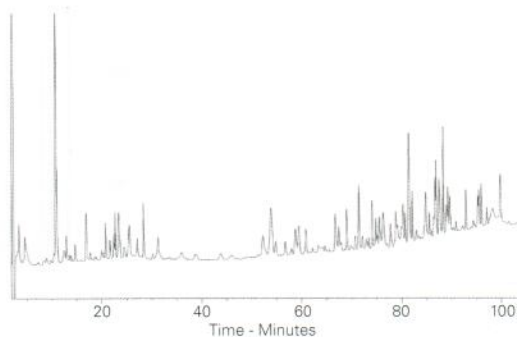
Application #AN2000

Conditions

Column: ACE 5 C18-300
Dimensions: 150 x 4.6 mm
Part Number: ACE-221-1546
Mobile Phase: A: 1% TFA in H₂O
 B: 1% TFA in MeCN/H₂O (1:1 v/v)
Gradient:

Time (mins)	%B
0	4
5	4
25	20
45	20
75	40
95	65
115	70
120	4

Flow Rate: 1.0 mL/min
Temperature: Ambient
Detection: UV, 214 nm



Reproduced with permission of School of Pharmacy, University of Sunderland, UK

Reproduced with permission of Department of Food Science, University of Reading, UK