

**Conditions**

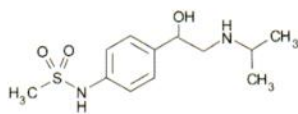
**Column:** ACE Excel 2 C18  
**Dimensions:** 50 x 2.1 mm  
**Part Number:** EXL-101-0502U  
**Mobile Phase:** A: 2 mM ammonium acetate + 0.1% formic acid in H<sub>2</sub>O  
 B: 2 mM ammonium acetate + 0.1% formic acid in MeOH  
**Gradient:**

Time (mins)	%B
0.0	10
3.0	50
3.1	10

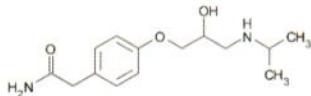
  
**Flow Rate:** 0.4 mL/min  
**Injection:** 10 µL  
**Temperature:** 40 °C  
**Detection:** MS/MS ESI in positive ion mode  
**Sample:** 2.5 pg/µL

**Analytes**

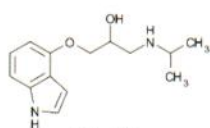
- Sotalol (*m/z* 272.9 → 212.8)
- Atenolol (*m/z* 267.0 → 189.8)
- Pindolol (*m/z* 248.9 → 115.8)
- Nadolol diastereomers (*m/z* 310.0 → 253.9)
- Metoprolol (*m/z* 268.0 → 115.8)
- Labetalol (*m/z* 329.1 → 161.8)
- Propranolol (*m/z* 260.0 → 115.7)
- Alprenolol (*m/z* 250.0 → 115.8)



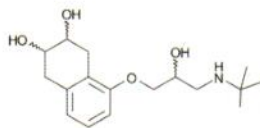
Sotalol



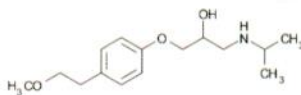
Atenolol



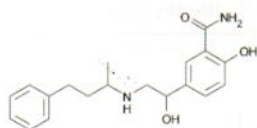
Pindolol



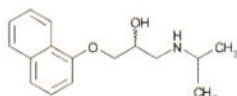
Nadolol diastereomers



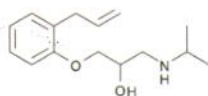
Metoprolol



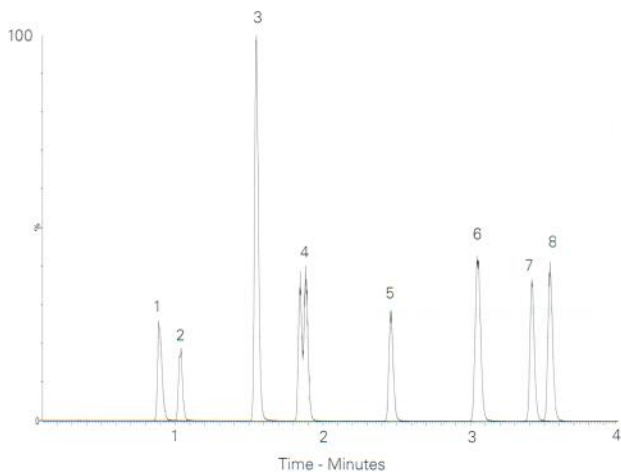
Labetalol



Propranolol



Alprenolol



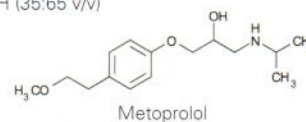
Reproduced with permission of Biotage GB Ltd, UK

**Conditions**

**Column:** ACE 5 C18  
**Dimensions:** 250 x 4.6 mm  
**Part Number:** ACE-121-2546  
**Mobile Phase:** 50 mM 1-methylpiperidine pH 11/MeOH (35:65 v/v)  
**Flow Rate:** 1 mL/min  
**Temperature:** Ambient  
**Detection:** UV, 215 nm

**Analytes**

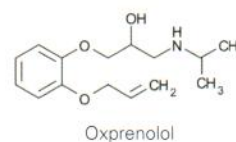
- Pindolol
- Metoprolol
- Oxprenolol
- Propranolol



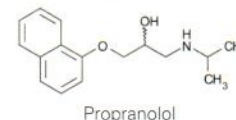
Metoprolol



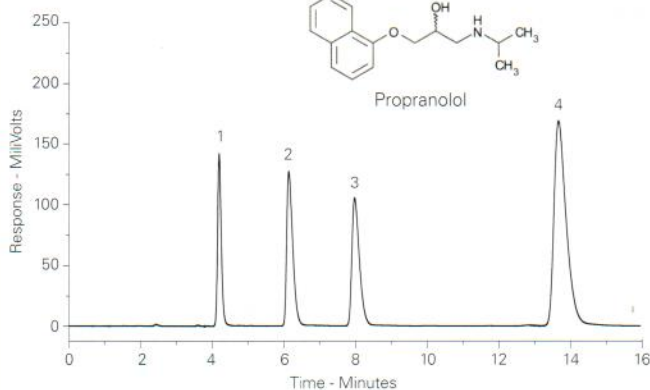
Pindolol



Oxprenolol



Propranolol



**Benzo(a)pyrene-7,8-quinone Derived Deoxynucleotide DNA Adducts**

**Conditions**

**Column:** ACE 3 C18  
**Dimensions:** 150 x 4.6 mm  
**Part Number:** ACE-111-1546  
**Mobile Phase:** A: 0.1% formic acid in H<sub>2</sub>O  
 B: MeCN  
**Gradient:**

Time (mins)	%B
0	25
8	55

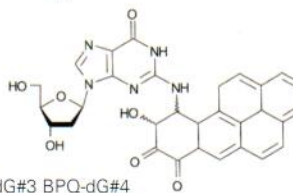
  
**Flow Rate:** 1 mL/min  
**Injection:** 5 µL  
**Temperature:** 35 °C  
**Detection:** UV, 285 nm

**Analytes**

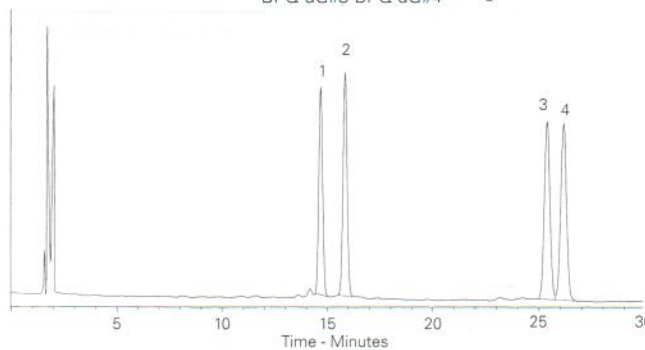
- BPQ-dG#1
- BPQ-dG#2
- BPQ-dG#3
- BPQ-dG#4



BPQ-dG#1 BPQ-dG#2



BPQ-dG#3 BPQ-dG#4



Reproduced with permission of Institute of Cancer Research, Sutton, Surrey, UK