

Benzodiazepines from Drugs of Abuse Screen (#AN2190)

Application #AN2370

Conditions

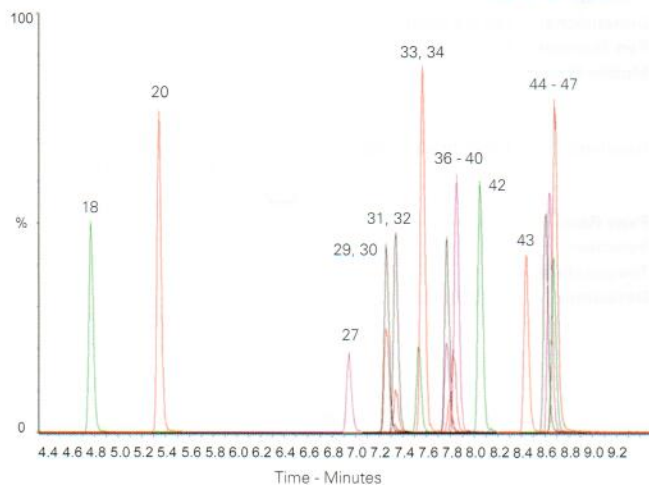
Column: ACE Excel 1.7 C18
Dimensions: 100 x 2.1 mm
Part Number: EXL-171-1002U
Mobile Phase: A: 5 mM ammonium acetate in H₂O
 B: 5 mM ammonium acetate in MeOH
Gradient:

Time (mins)	%B
0.0	10
10.0	90
11.9	90
13.4	10
15.5	10

Flow Rate: 0.3 mL/min
Injection: 10 µL
Temperature: 40 °C
Detection: MS Quattro Premier XE triple quad
 MRM, positive and negative ESI mode
 Desolvation temperature: 450 °C
 IonSource temperature: 150 °C
 Collision gas pressure: 3.5 x 10⁻³ mbar

Analytes

18. 7-Amino-clonazepam (*m/z* 286.2 → 121.0)
20. 7-Amino-flunitrazepam (*m/z* 284.2 → 135.0)
27. Bromazepam (*m/z* 316.1 → 182.1)
29. Clonazepam (*m/z* 316.1 → 270.1)
30. Nitrazepam (*m/z* 282.2 → 236.1)
31. α-Hydroxytriazolam (*m/z* 359.1 → 331.1)
32. Flunitrazepam (*m/z* 314.2 → 268.2)
33. α-Hydroxyalprazolam (*m/z* 325.2 → 297.1)
34. Estazolam (*m/z* 295.2 → 267.2)
36. Triazolam (*m/z* 343.0 → 308.1)
37. 2-Hydroxyethylflurazepam (*m/z* 333.2 → 109.0)
38. Lorazepam (*m/z* 321.1 → 275.1)
39. Oxazepam (*m/z* 287.2 → 241.0)
40. Alprazolam (*m/z* 309.2 → 281.2)
42. Temazepam (*m/z* 301.1 → 255.1)
43. Nordiazepam (*m/z* 271.1 → 139.9)
44. Midazolam (*m/z* 326.2 → 291.2)
45. Diazepam-d5 (*m/z* 290.2 → 154.0)
46. Diazepam (*m/z* 285.2 → 154.0)
47. Flurazepam (*m/z* 388.2 → 315.1)



Reproduced with permission of Biotage GB Ltd, UK

Available from



LCC Engineering & Trading GmbH

Steinbruchstrasse 4, CH-4622 Egerkingen, Switzerland

Tel.: +41 62 398 5271, Fax.: +41 62 398 5274

info@chemsupply.ch

www.chromatographyshop.com

Biomarker Analysis for Gaucher Disease by LC-MS/MS

Application #AN3490

Conditions

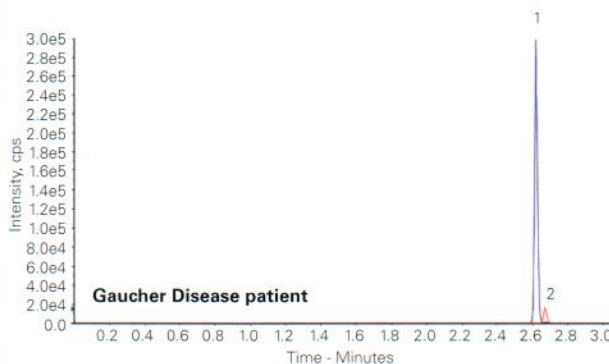
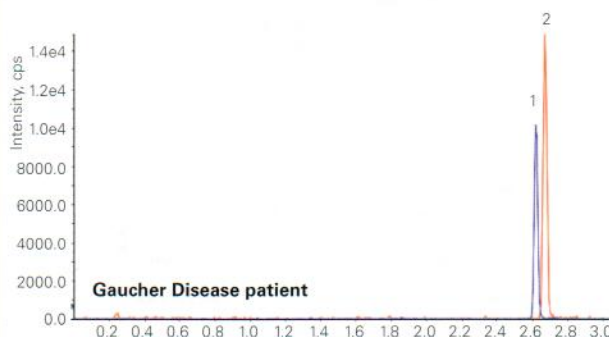
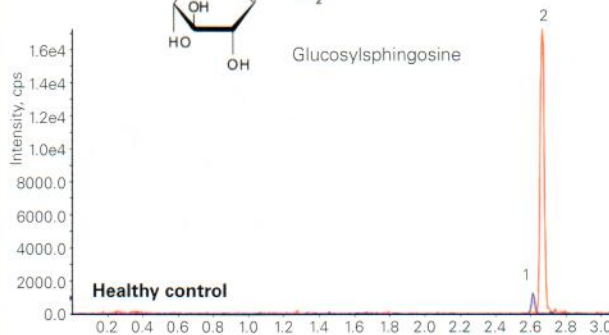
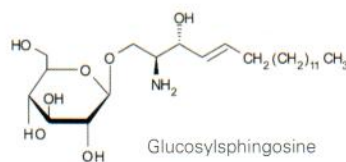
Column: ACE 3 C8
Dimensions: 50 x 2.1 mm
Part Number: ACE-112-0502
Mobile Phase: A: 50 mM formic acid in H₂O
 B: 50 mM formic acid in MeCN/acetone (1:1 v/v)
Gradient:

Time (mins)	%B
0.0	5
4.0	66
4.1	100
5.1	100
5.9	5

Flow Rate: 0.9 mL/min
Injection: 5 µL
Temperature: 60 °C
Detection: API 4000 triple quad MS
 ESI in positive ion mode
 Temperature: 500 °C

Analytes

1. Glucosylsphingosine (*m/z* 462 → 282)
2. Lyso-Gb2 (IS) (*m/z* 624 → 282)



Rolfs A, Giese AK, Grittner U, Mascher D, Elstein D, et al. (2013) Glucosylsphingosine Is a Highly Sensitive and Specific Biomarker for Primary Diagnostic and Follow-Up Monitoring in Gaucher Disease in a Non-Jewish, Caucasian Cohort of Gaucher Disease Patients. PLoS ONE 8(11): e79732. doi:10.1371/journal.pone.0079732