

Conditions

Column: ACE 3 C8
Dimensions: 50 x 2.1 mm
Part Number: ACE-112-0502
Mobile Phase: A: 50 mM formic acid in H₂O
 B: 50 mM formic acid in MeCN/acetone (1:1 v/v)
Gradient:

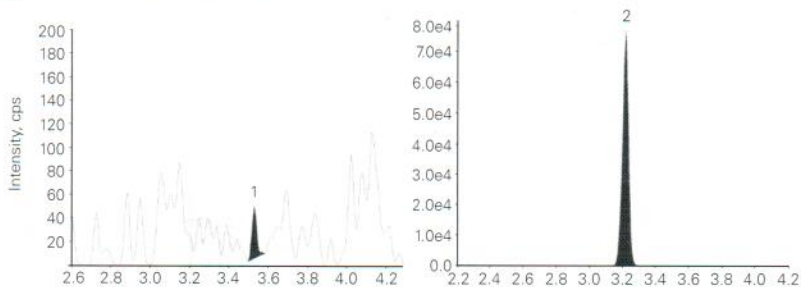
Time (mins)	%B
0.0	5
4.0	66
4.1	100
5.1	100
5.9	5

Flow Rate: 0.9 mL/min
Injection: 5 µL
Temperature: 60 °C
Detection: API 4000 triple quad MS
 ESI in positive ion mode
 Temperature: 500 °C

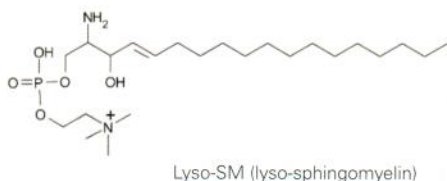
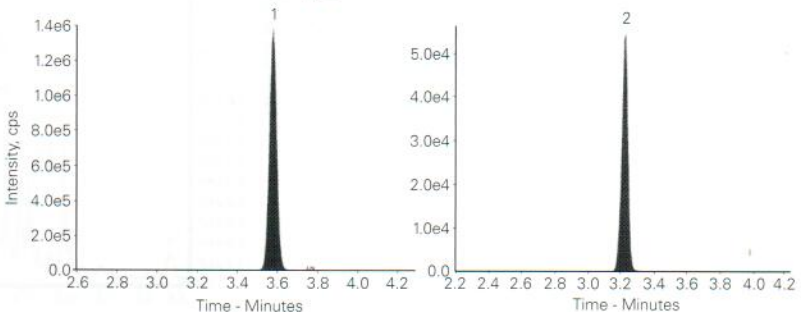
Analytes

1. Lyso-SM-509 (m/z 509 → 184)
2. Lyso-Gb2 (IS) (m/z 624 → 282)

Human Control Plasma



Niemann-Pick Patient Sample



Giese A, Mascher H, Grittner U, Eichler S, Kramp G, Lukas J, te Vruchte D, Eisa N, Cortina-Borja M, Porter F, Platt F, Rolfs A. Orphanet Journal of Rare Diseases (2015) 10:78 A novel, highly sensitive and specific biomarker for Niemann-Pick type C1 disease. DOI 10.1186/s13023-015-0274-1

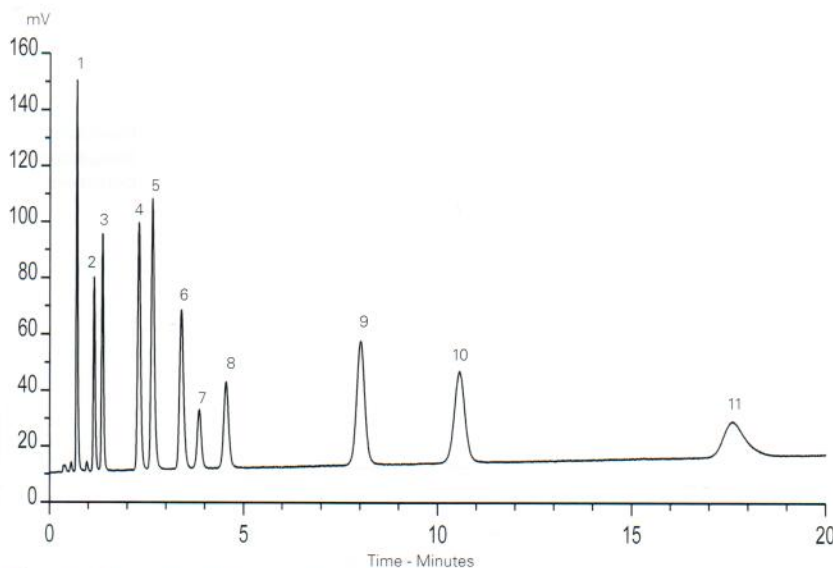
Biomarker Profiling

Conditions

Column: ACE UltraCore 2.5 SuperC18
Dimensions: 50 x 2.1 mm
Part Number: CORE-25A-0502U
Mobile Phase: A: 7% methanol, 2.1 mM tetrabutylammonium bisulphate + 84 mM KH₂PO₄, pH 6 with KOH
 B: 7% methanol, 2.1 mM tetrabutylammonium bisulphate + 8.4 mM KH₂PO₄, pH 6 with KOH
 A/B: (90:10 v/v)
Flow Rate: 0.4 mL/min
Injection: 2 µL
Temperature: Ambient
Detection: UV, 260 nm

Analytes

1. Deoxyuridine
2. Deoxyguanosine
3. Deoxythymidine
4. Adenosine
5. Deoxyadenosine
6. 2-Fluoro-2'-fluoroadenine arabinoside
7. 2-Fluoro-deoxyadenosine
8. 2-Fluoro-adenosine
9. 2-Chlorodeoxyadenosine
10. Clofarabine
11. Methylthioadenosine



Available from



LCC Engineering & Trading GmbH
 Steinbruchstrasse 4, CH-4622 Egerkingen, Switzerland
 Tel.: +41 62 398 5271, Fax.: +41 62 398 5274
info@chemsupply.ch
www.chromatographyshop.com