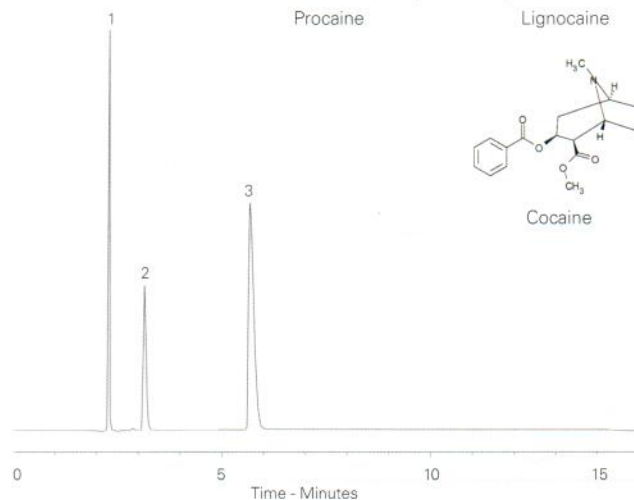
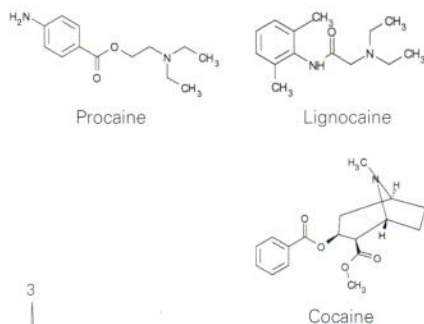


Conditions

Column: ACE 5 AQ
Dimensions: 250 x 4.6 mm
Part Number: ACE-126-2546
Mobile Phase: MeCN/H₂O/2.5 M H₂SO₄
 (21:79:0.1 v/v/v)
Flow Rate: 1.5 mL/min
Detection: UV

Analytes

1. Procaine
2. Lignocaine
3. Cocaine



Reproduced with permission of Forensic Science Laboratories, Lothian and Borders Police, UK

Available from

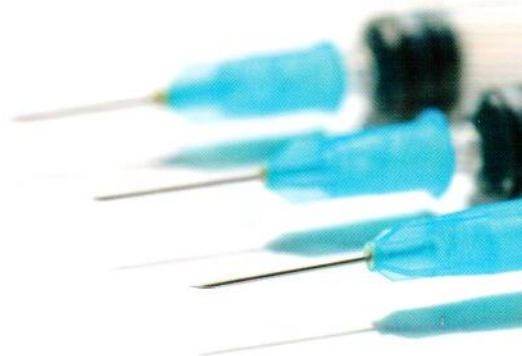


LCC Engineering & Trading GmbH

Steinbruchstrasse 4, CH-4622 Egerkingen, Switzerland
 Tel.: +41 62 398 5271, Fax.: +41 62 398 5274

info@chemsupply.ch

www.chromatographyshop.com



15-Hydroxy Lubiprostone in Human Plasma

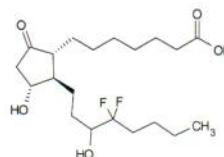
Application #AN1900

Conditions

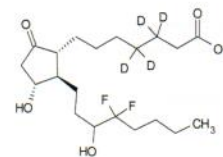
Column: ACE Excel 2 C18
Dimensions: 50 x 3.0 mm
Part Number: EXL-101-0503U
Mobile Phase: A: 0.1% formic acid in H₂O
 B: MeCN
Flow Rate: 0.65 mL/min
Injection: 15 µL
Temperature: 35 °C
Detection: MDS Sciex API 5000
 TurbolonSpray negative mode
 IonSpray voltage -4500 V
 Source Temperature 450 °C

Analytes

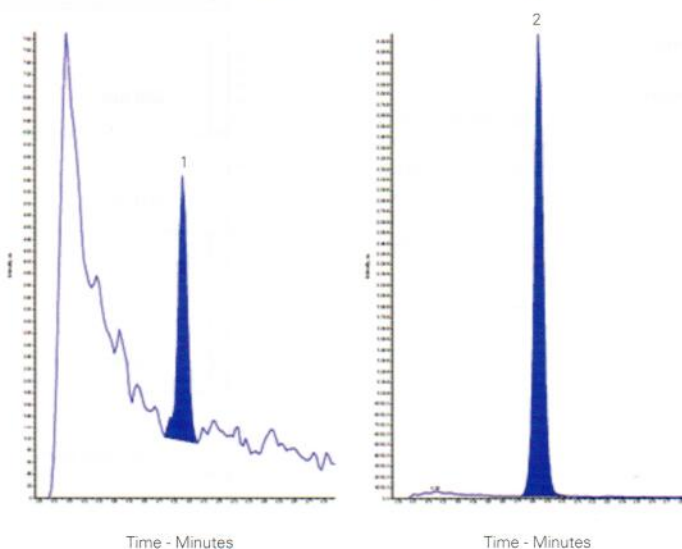
1. 15-Hydroxy lubiprostone
 (*m/z* 391.2 → 373.2)
2. 15-Hydroxy lubiprostone-d4 (IS)
 (*m/z* 395.2 → 377.2)



15-Hydroxy lubiprostone



15-Hydroxy lubiprostone-d4



Lowest calibration standard sample containing 2.0 pg/mL in human EDTA K3 plasma.
 Lubiprostone, a fatty acid derived from prostaglandin E1, is rapidly metabolised to 15-hydroxy lubiprostone. Quantitation is based on 15-hydroxy lubiprostone, with the d4 analogue as internal standard.

Reproduced with permission of inVentiv Health Clinical, Quebec, Canada