

Conditions

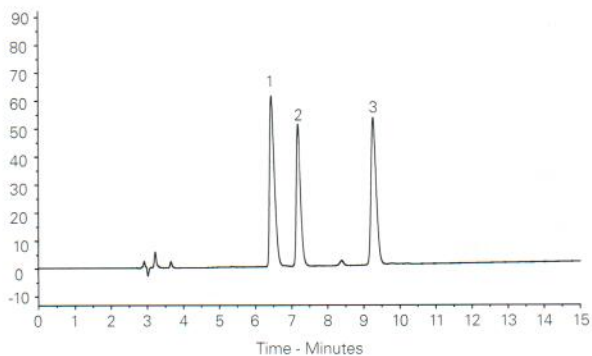
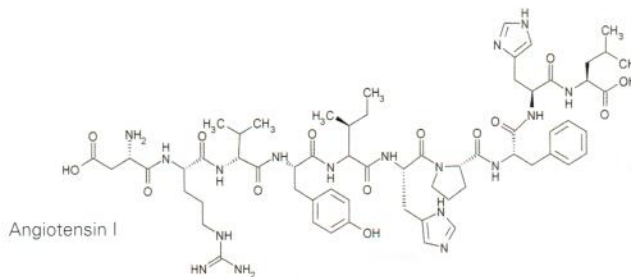
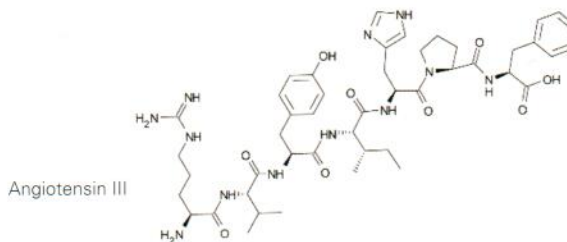
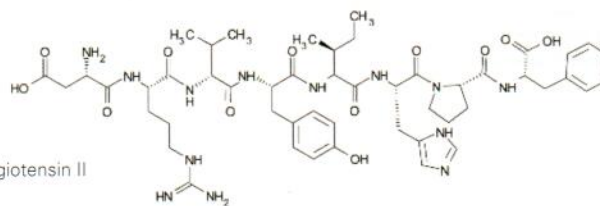
Column: ACE 5 C18-300
Dimensions: 250 x 4.6 mm
Part Number: ACE-221-2546
Mobile Phase: A: 0.1% TFA in H₂O
 B: 0.1% TFA in H₂O/MeCN (80:20 v/v)
Gradient:

Time (mins)	%B
0	25
15	40

Flow Rate: 1.0 mL/min
Temperature: Ambient
Detection: UV, 215 nm

Analytes

1. Angiotensin II (MW 1046.2)
2. Angiotensin III (MW 931.1)
3. Angiotensin I (MW 1296.5)



Annatto

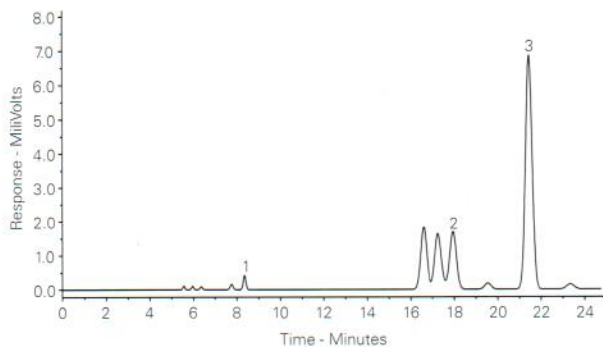
Application #AN2840

Conditions

Column: ACE 5 C18
Dimensions: 250 x 4.6 mm
Part Number: ACE-121-2546
Mobile Phase: MeCN/0.16% acetic acid in H₂O (70:30 v/v)
Flow Rate: 1.2 mL/min
Temperature: Ambient
Detection: UV-VIS, 478 nm

Analytes

1. Norbixin
2. 9'-trans-Bixin
3. 9'-cis-Bixin



Reproduced with permission of Lincolne Sutton & Wood, Norwich, UK

Available from



LCC Engineering & Trading GmbH
 Steinbruchstrasse 4, CH-4622 Egerkingen, Switzerland
 Tel.: +41 62 398 5271, Fax.: +41 62 398 5274
info@chemsupply.ch
www.chromatographyshop.com



Annatto - An orange-red condiment and food colouring derived from the seeds of the achiote tree.