

Antihistamines and Expectorants – Mobile Phase Effects

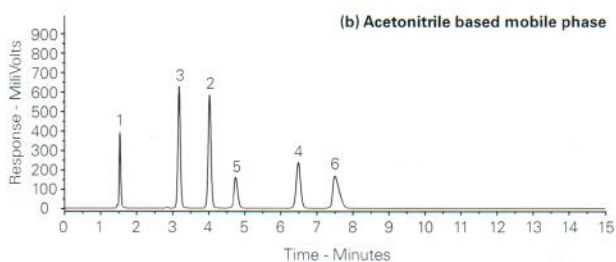
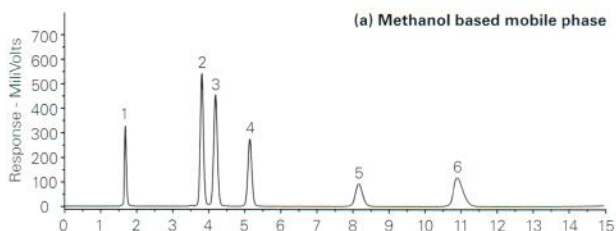
Application #AN3960

Conditions

Column: ACE 5 C18
Dimensions: 150 x 4.6 mm
Part Number: ACE-121-1546
Mobile Phase: (a) MeOH/50 mM KH_2PO_4 (pH 3.0) (45:55 v/v)
 (b) MeCN/50 mM KH_2PO_4 (pH 3.0) (28:72 v/v)
Flow Rate: 1.0 mL/min
Temperature: Ambient
Detection: UV, 220 nm

Analytes

1. Maleic acid
2. Salicylamide
3. Guaifenesin
4. Guaiacol
5. Chlorpheniramine maleate
6. Dextromethorphan



Antihistamines – Fast Analysis

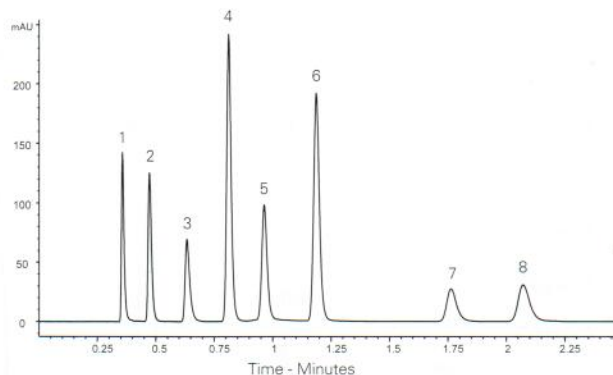
Application #AN4290

Conditions

Column: ACE UltraCore 2.5 SuperC18
Dimensions: 50 x 3.0 mm
Part Number: CORE-25A-0503U
Mobile Phase: 30 mM KH_2PO_4 pH 2.7 in $\text{H}_2\text{O}/\text{MeOH}$ (60:40 v/v)
Flow Rate: 0.85 mL/min
Injection: 0.9 μL
Temperature: 30 °C
Detection: UV, 214 nm

Analytes

1. Maleic acid
2. Norephedrine
3. Doxylamine
4. Salicylamide
5. Guaifenesin
6. Guaiacol
7. Chlorpheniramine
8. Triprolidine



Anti-Ulcer Drugs in Basic Mobile Phase Conditions

Application #AN1950

Conditions

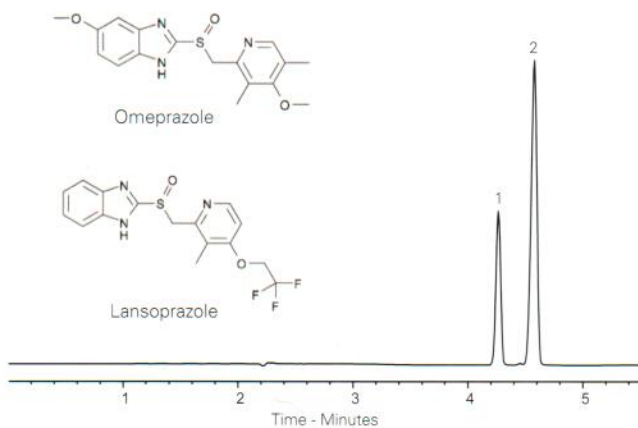
Column: ACE 5 SuperC18
Dimensions: 150 x 4.6 mm
Part Number: EXL-1211-1546U
Mobile Phase: A: 0.1% ammonia in H_2O
 B: 0.1% ammonia in $\text{MeCN}/\text{H}_2\text{O}$ (90:10 v/v)
Gradient:

Time (mins)	%B
0	10
5	90

Flow Rate: 1 mL/min
Injection: 5 μL
Temperature: 30 °C
Detection: UV, 280 nm

Analytes

1. Omeprazole
2. Lansoprazole



Available from

Need a custom column?

LCC
 ENGINEERING &
 TRADING GmbH

www.chromatographyshop.com

Steinbruchstrasse 4, CH-4622 Egerkingen, Switzerland

Tel.: +41 62 398 5271, Fax.: +41 62 398 5274

info@chemsupply.ch

www.chromatographyshop.com