

Conditions

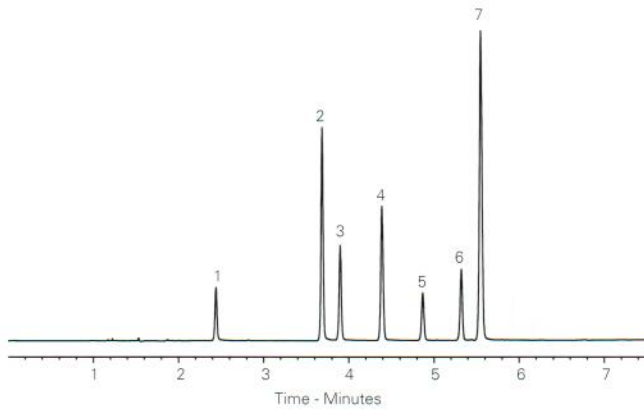
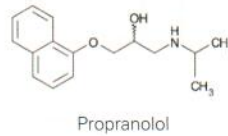
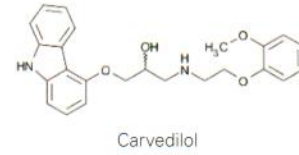
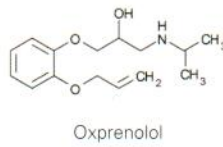
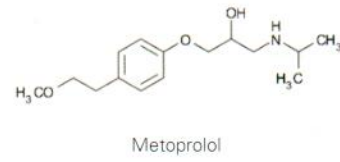
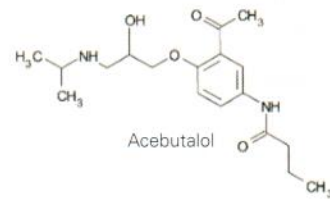
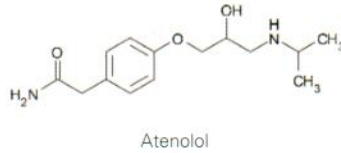
Column: ACE Excel 5 SuperC18
Dimensions: 150 x 4.6 mm
Part Number: EXL-1211-1546U
Mobile Phase: A: 0.1% ammonia in H₂O
 B: 0.1% ammonia in MeCN
Gradient:

Time (mins)	%B
0.0	30
5.0	90
7.0	90
7.5	30
22.5	30

Flow Rate: 1 mL/min
Injection: 5 µL
Temperature: 35 °C
Detection: UV, 230 and 254 nm

Analytes

1. Atenolol
2. Acebutalol
3. Pindolol
4. Metoprolol
5. Oxprenolol
6. Carvedilol
7. Propranolol



β-Blockers at High pH – Fast Analysis

Available from



LCC Engineering & Trading GmbH
 Steinbruchstrasse 4, CH-4622 Egerkingen, Switzerland
 Tel.: +41 62 398 5271, Fax.: +41 62 398 5274
info@chemsupply.ch
www.chromatographyshop.com

Application #AN2160

Conditions

Column: ACE Excel 1.7 SuperC18
Dimensions: 50 x 3.0 mm
Part Number: EXL-1711-0503U
Mobile Phase: A: 0.1% ammonia in H₂O
 B: 0.1% ammonia in MeCN
Gradient:

Time (mins)	%B
0.0	30
4.3	55
5.0	55
6.0	30
9.0	30

Flow Rate: 1 mL/min
Injection: 0.7 µL
Temperature: 20 °C
Detection: UV, 230 nm

Analytes

1. Atenolol
2. Acebutalol
3. Pindolol
4. Metoprolol
5. Oxprenolol
6. Carvedilol
7. Propranolol

