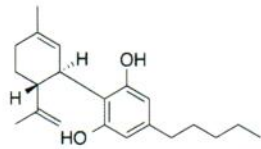


Conditions

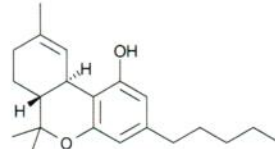
Column: ACE 3 C18-PFP
Dimensions: 150 x 4.6 mm
Part Number: ACE-1110-1546
Mobile Phase: H₂O/MeCN (38:62 v/v)
Flow Rate: 1 mL/min
Injection: 30 µL
Temperature: 55 °C
Detection: UV, 220 nm

Analytes

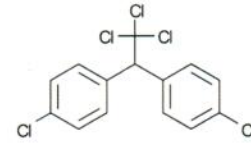
1. Cannabidiol (CBD)
2. Δ⁹-Tetrahydrocannabinol (THC)
3. 4,4-Dichlorodiphenyltrichloroethane (DDT) (IS)



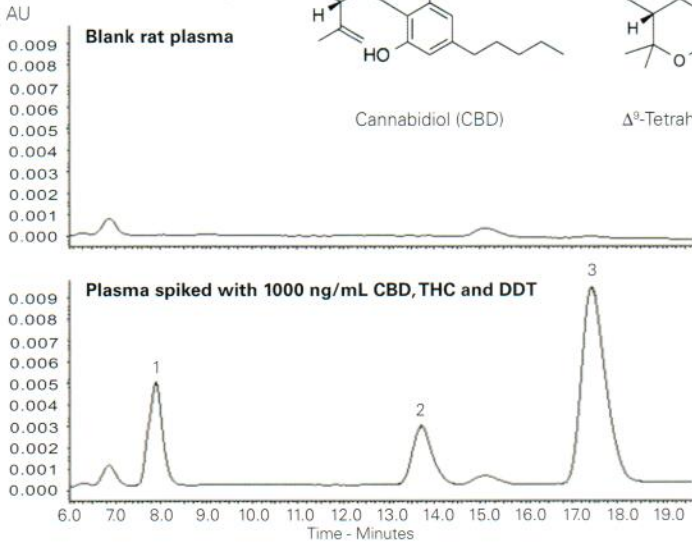
Cannabidiol (CBD)



Δ⁹-Tetrahydrocannabinol (THC)



4,4-Dichlorodiphenyltrichloroethane (DDT) (IS)



LLOQ 10 ng/mL for both cannabinoids
 Method linearity 10 – 10,000 ng/mL



Reproduced with permission of School of Pharmacy, Centre for Biomolecular Sciences, The University of Nottingham, UK

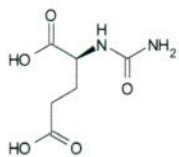
Carglumic Acid in Human Plasma by LC-MS/MS

Conditions

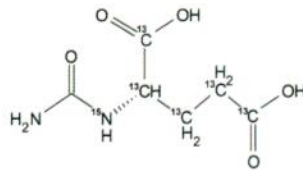
Column: ACE 5 CN
Dimensions: 150 x 4.6 mm
Part Number: ACE-124-1546
Mobile Phase: MeCN/MeOH/0.1% acetic acid pH 3.2 (40:40:20 v/v/v)
Flow Rate: 1 mL/min
Temperature: 40 °C
Detection: MDS Sciex API-4000 triple quad MS
 Negative ion mode ESI
 Ion source temperature: 500 °C
 Ion spray voltage: -4500 V
 20% split flow to ion spray interface

Analytes

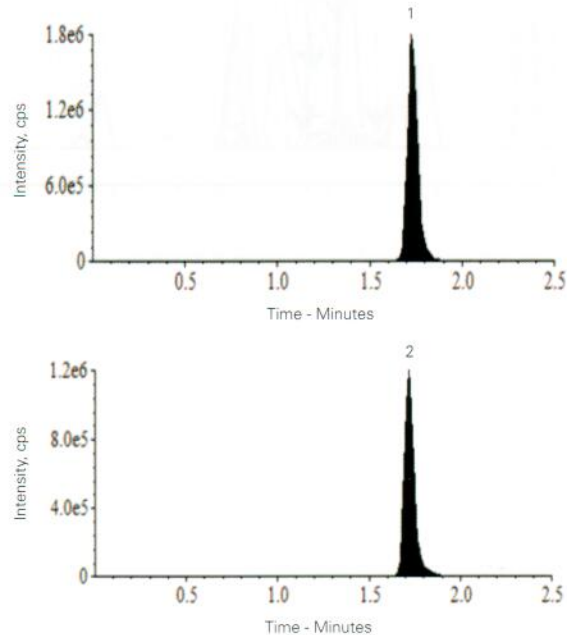
1. Carglumic acid
(*m/z* 189 → 146)
(LLOQ 6.0 ng/mL)
2. Carglumic acid-¹³C ¹⁵N (I.S.)
(*m/z* 195 → 152)



Carglumic acid



Carglumic acid-¹³C ¹⁵N (I.S.)



Reproduced with permission of Chemistry Department, School of Sciences, Gujarat University, India