

## Catechins

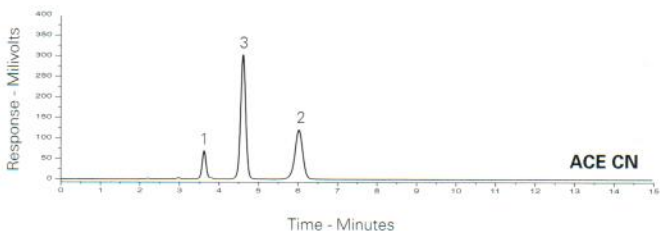
Application #AN3950

### Conditions

**Column:** ACE 5 C18, ACE 5 CN  
**Dimensions:** 150 x 4.6 mm  
**Part Number:** ACE-121-1546, ACE-124-1546  
**Mobile Phase:** MeOH/0.1% formic acid in H<sub>2</sub>O (25:75 v/v)  
**Flow Rate:** 1 mL/min  
**Injection:** 2 µL  
**Temperature:** Ambient  
**Detection:** UV, 280 nm

### Analytes

1. Epigallocatechin
2. (+)-Epicatechin
3. Epigallocatechin gallate



## Catecholamine Analysis (I)

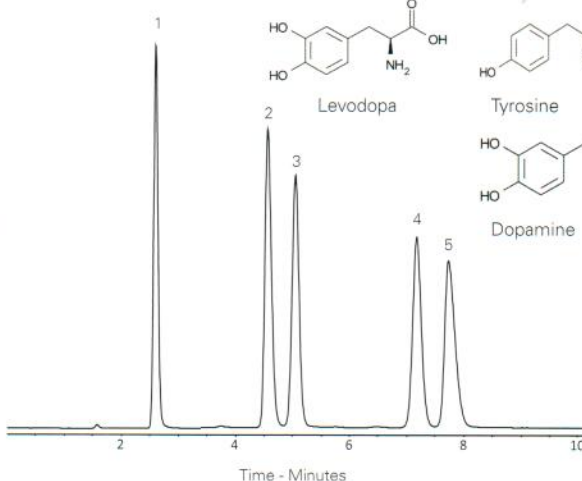
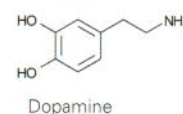
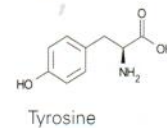
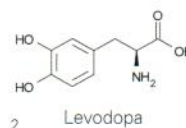
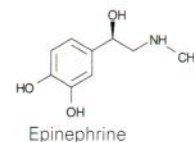
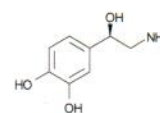
Application #AN2020

### Conditions

**Column:** ACE 5 C18-PFP  
**Dimensions:** 150 x 4.6 mm  
**Part Number:** ACE-1210-1546  
**Mobile Phase:** 12.5 mM ammonium formate pH 3.0 in H<sub>2</sub>O  
**Flow Rate:** 1 mL/min  
**Temperature:** 22 °C  
**Detection:** UV, 266 nm

### Analytes

1. Norepinephrine
2. Epinephrine
3. Levodopa
4. Tyrosine
5. Dopamine



## Catecholamine Analysis (II)

Application #AN3910

### Conditions

**Column:** ACE 5 AQ  
**Dimensions:** 150 x 4.6 mm  
**Part Number:** ACE-126-1546  
**Mobile Phase:** 50 mM KH<sub>2</sub>PO<sub>4</sub> pH 3.0 in H<sub>2</sub>O  
**Flow Rate:** 1 mL/min  
**Injection:** 2 µL  
**Temperature:** Ambient  
**Detection:** UV, 210 nm

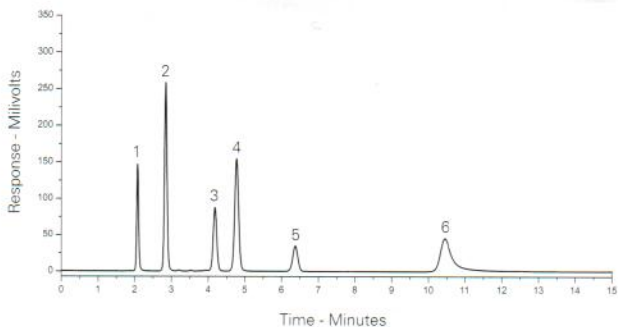
### Analytes

1. Noradrenaline (Norepinephrine)
2. Adrenaline (Epinephrine)
3. L-DOPA
4. Dopamine
5. L-Tyrosine
6. VMA (Vanillylmandelic acid)

available from



**LCC Engineering & Trading GmbH**  
 Steinbruchstrasse 4, CH-4622 Egerkingen, Switzerland  
 Tel.: +41 62 398 5271, Fax.: +41 62 398 5274  
[info@chemsupply.ch](mailto:info@chemsupply.ch)  
[www.chromatographyshop.com](http://www.chromatographyshop.com)



## Catecholamines by LC-MS/MS

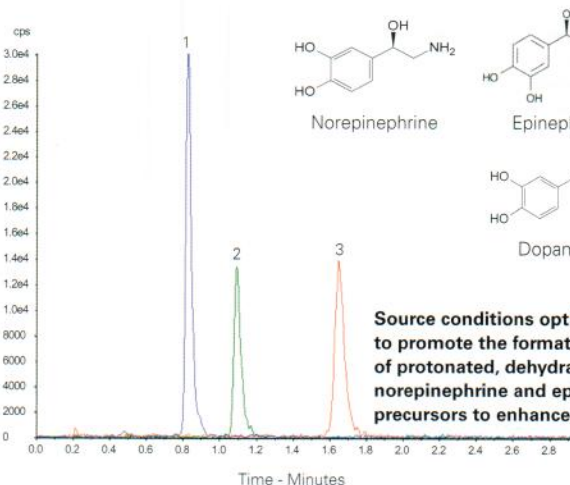
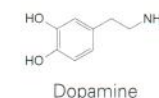
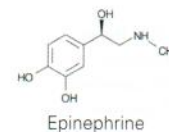
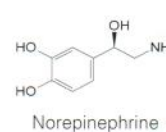
Application #AN2320

### Conditions

**Column:** ACE Excel 2 C18-PFP  
**Dimensions:** 100 x 2.1 mm  
**Part Number:** EXL-1010-1002U  
**Mobile Phase:** 2 mM ammonium formate pH 3.2/MeOH (98:2 v/v)  
**Flow Rate:** 0.4 mL/min  
**Injection:** 20 µL  
**Temperature:** 40 °C  
**Detection:** AB SCIEX triple quad 5500  
 Positive ESI mode  
 Source temperature: 700 °C  
 IonSpray voltage: 5500 V

### Analytes

1. Norepinephrine  
(*m/z* 152.1 → 107.1)
2. Epinephrine  
(*m/z* 166.1 → 107.1)
3. Dopamine  
(*m/z* 154.1 → 91.1)



Source conditions optimised to promote the formation of protonated, dehydrated norepinephrine and epinephrine precursors to enhance sensitivity.

Reproduced with permission of Biotage GB Ltd, UK