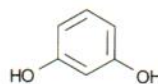


Conditions

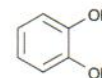
Column: (I) ACE Excel 3 CN-ES (II) ACE Excel 3 C18-Amide
Dimensions: 150 x 4.6 mm
Part Number: (I) EXL-1113-1546U (II) EXL-1112-1546U
Mobile Phase: (I) 20 mM H₃PO₄ in MeCN/H₂O (25:75 v/v)
 (II) 20 mM H₃PO₄ in MeCN/H₂O (10:90 v/v)
Flow Rate: 1.5 mL/min
Injection: 5 µL
Temperature: 30 °C
Detection: UV, 270 nm

Analytes

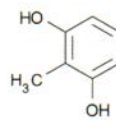
1. Resorcinol
2. Catechol
3. 2-Methylresorcinol
4. 4-Methylcatechol
5. 3-Methylcatechol
6. 4-Nitrocatechol



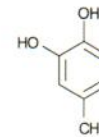
Resorcinol



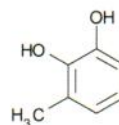
Catechol



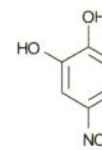
2-Methylresorcinol



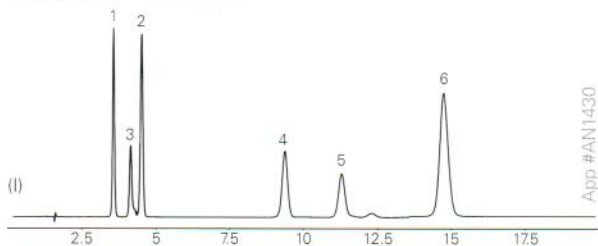
4-Methylcatechol



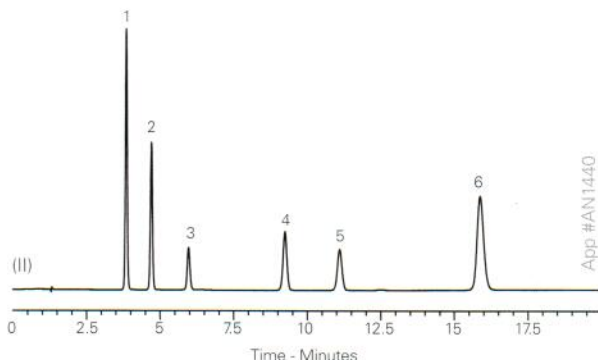
3-Methylcatechol



4-Nitrocatechol



App #AN1430



App #AN1440

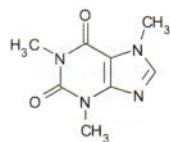
Cathinone Psychoactive Substances by LC-UV and LC-Amperometry

Conditions

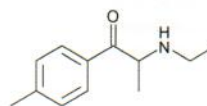
Column: ACE 3 C18
Dimensions: 150 x 4.6 mm
Part Number: ACE-111-1546
Mobile Phase: 10 mM ammonium acetate-100 mM KCl pH 4.3/MeOH (70:30 v/v)
Flow Rate: 0.8 mL/min
Injection: 10 µL
Temperature: 22 °C
Detection: UV, 264 nm
 Amperometric Potential +1.4 V

Analytes

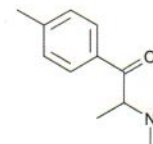
1. Caffeine
2. 4-Methylmethcathinone (4-MMC, mephedrone)
3. 4-Methylethcathinone (4-MEC)



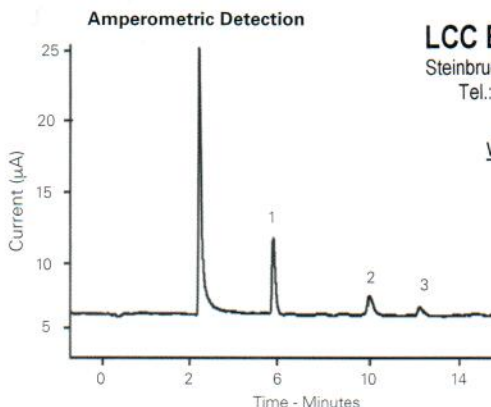
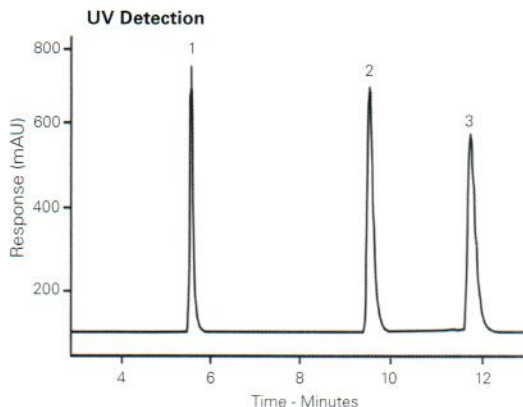
Caffeine



4-Methylethcathinone (4-MEC)



4-Methylmethcathinone (4-MMC, mephedrone)



Available from



LCC Engineering & Trading GmbH
 Steinbruchstrasse 4, CH-4622 Egerkingen, Switzerland
 Tel.: +41 62 398 5271, Fax.: +41 62 398 5274
info@chemsupply.ch
www.chromatographyshop.com

Zuway K, Smith J, Foster C, Kapur N, Banks C, Sutcliffe O, (2015) Detection and quantification of new psychoactive substances (NPSs) within the evolved 'legal high' product, NRG-2, using high performance liquid chromatography-amperometric detection (HPLC-AD). Analyst 140, 6283. doi:10.1039/c5an01106j