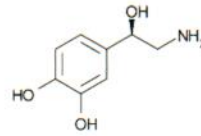


Conditions

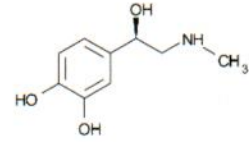
Column: ACE 5 C18-PFP
Dimensions: 150 x 4.6 mm
Part Number: ACE-1210-1546
Mobile Phase: 20 mM ammonium formate pH 3.0 in H₂O
Flow Rate: 1 mL/min
Injection: 5 µL
Temperature: 25 °C
Detection: Available from

Analytes

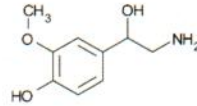
1. Norepinephrine
2. Epinephrine
3. Normetanephrine
4. Dopamine
5. Metanephrine



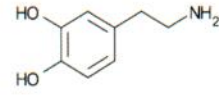
Norepinephrine



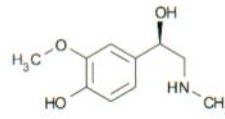
Epinephrine



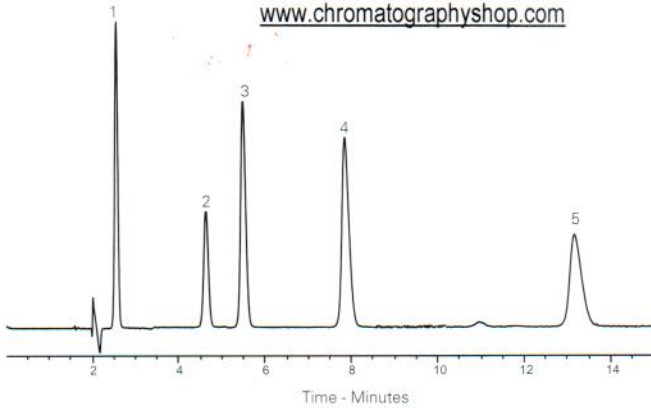
Normetanephrine



Dopamine



Metanephrine



LCC Engineering & Trading GmbH

Steinbruchstrasse 4, CH-4622 Egerkingen, Switzerland
 Tel.: +41 62 398 5271, Fax.: +41 62 398 5274

info@chemsupply.ch

www.chromatographyshop.com

Catecholamines from Plasma

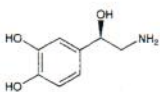
Application #AN3210

Conditions

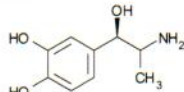
Column: ACE 5 C18
Dimensions: 150 x 4.6 mm
Part Number: ACE-121-1546
Mobile Phase: 50 mM sodium acetate
 pH 7.0/MeCN/MeOH (50:35:15 v/v/v)
Flow Rate: 0.9 mL/min
Temperature: Ambient
Detection: Fluorescence – λ_{Ex} 350 nm, λ_{Em} 480 nm
Sample: Ion pair extraction using diphenyl-borate-ethanolamine.
 Derivatisation using diphenyl-ethylenediamine as fluorescent probe

Analytes

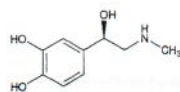
1. Noradrenaline (Norepinephrine)
2. 3,4-Dihydroxynorephedrine (I.S.)
3. Adrenaline (Epinephrine)



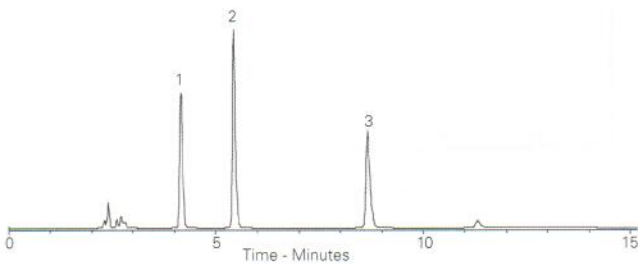
Noradrenaline



3,4-Dihydroxynorephedrine (I.S.)



Adrenaline



Reproduced with permission of MAS University Hospital, Malmo, Sweden

Catecholamines from Urine

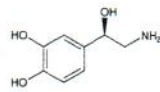
Application #AN3200

Conditions

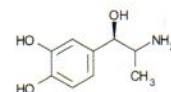
Column: ACE 5 C18
Dimensions: 150 x 4.6 mm
Part Number: ACE-121-1546
Mobile Phase: 50 mM sodium acetate
 pH 7.0/MeCN/MeOH (50:35:15 v/v/v)
Flow Rate: 0.9 mL/min
Temperature: Ambient
Detection: Fluorescence – λ_{Ex} 350 nm, λ_{Em} 480 nm
Sample: Ion pair extraction using diphenyl-borate-ethanolamine.
 Derivatisation using diphenyl-ethylenediamine as fluorescent probe

Analytes

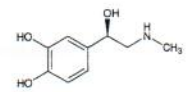
1. Noradrenaline (Norepinephrine)
2. 3,4-Dihydroxynorephedrine (I.S.)
3. Adrenaline (Epinephrine)
4. Dopamine



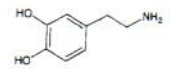
Noradrenaline



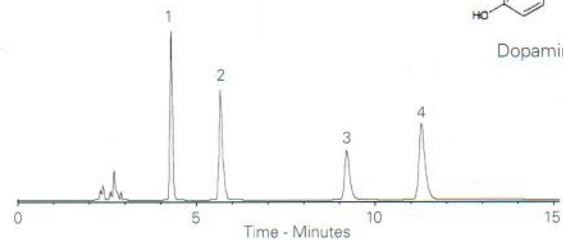
3,4-Dihydroxynorephedrine (I.S.)



Adrenaline



Dopamine



Reproduced with permission of MAS University Hospital, Malmo, Sweden