

Conditions

Column: ACE UltraCore 2.5 SuperPhenylHexyl
Dimensions: 100 x 2.1 mm
Part Number: CORE-25B-1002U
Mobile Phase: A: 2 mM ammonium formate + 0.05% formic acid in H₂O
 B: 2 mM ammonium formate + 0.05% formic acid in MeOH
Gradient:

Time (mins)	%B
0.00	0
1.00	70
1.10	70
1.11	0
4.50	0

Flow Rate: 0.3 mL/min
Injection: 10 µL
Temperature: 30 °C
Detection: Shimadzu LCMS-8040
 ESI in positive ion mode
Sample: Standard 100 ng/mL in urine (after SPE purification)

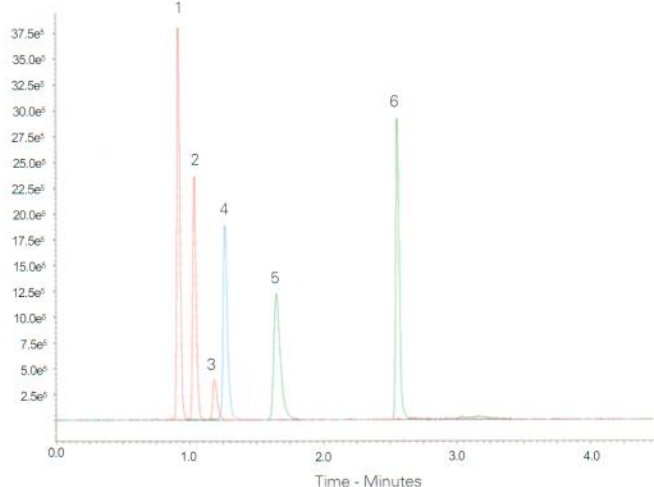
Analytes

1. Norepinephrine (m/z 170 → 107)
2. Epinephrine (m/z 184 → 166)
3. Normetanephrine (m/z 184 → 166)
4. Dopamine (m/z 154 → 91)
5. Metanephrine (m/z 198 → 180)
6. 3-Methoxytyramine (m/z 181 → 91)

Available from



LCC Engineering & Trading GmbH
 Steinbruchstrasse 4, CH-4622 Egerkingen, Switzerland
 Tel.: +41 62 398 5271, Fax.: +41 62 398 5274
info@chemsupply.ch
www.chromatographyshop.com



Reproduced with permission of Shimadzu, France

Catecholamines and Metanephrines Separation (Gradient)

Conditions

Column: ACE 5 C18-PFP
Dimensions: 150 x 4.6 mm
Part Number: ACE-1210-1546
Mobile Phase: A: 20 mM ammonium formate pH 3.0 in H₂O
 B: 20 mM ammonium formate pH 3.0 in MeOH/H₂O (90:10 v/v)
Gradient:

Time (mins)	%B
0	0
5	40
6	40
7	0
17	0

Flow Rate: 1 mL/min
Injection: 5 µL
Temperature: 25 °C
Detection: UV, 260 nm

Analytes

1. Norepinephrine
2. Epinephrine
3. Normetanephrine
4. Dopamine
5. Metanephrine

