

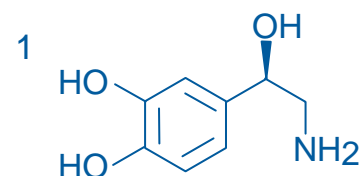
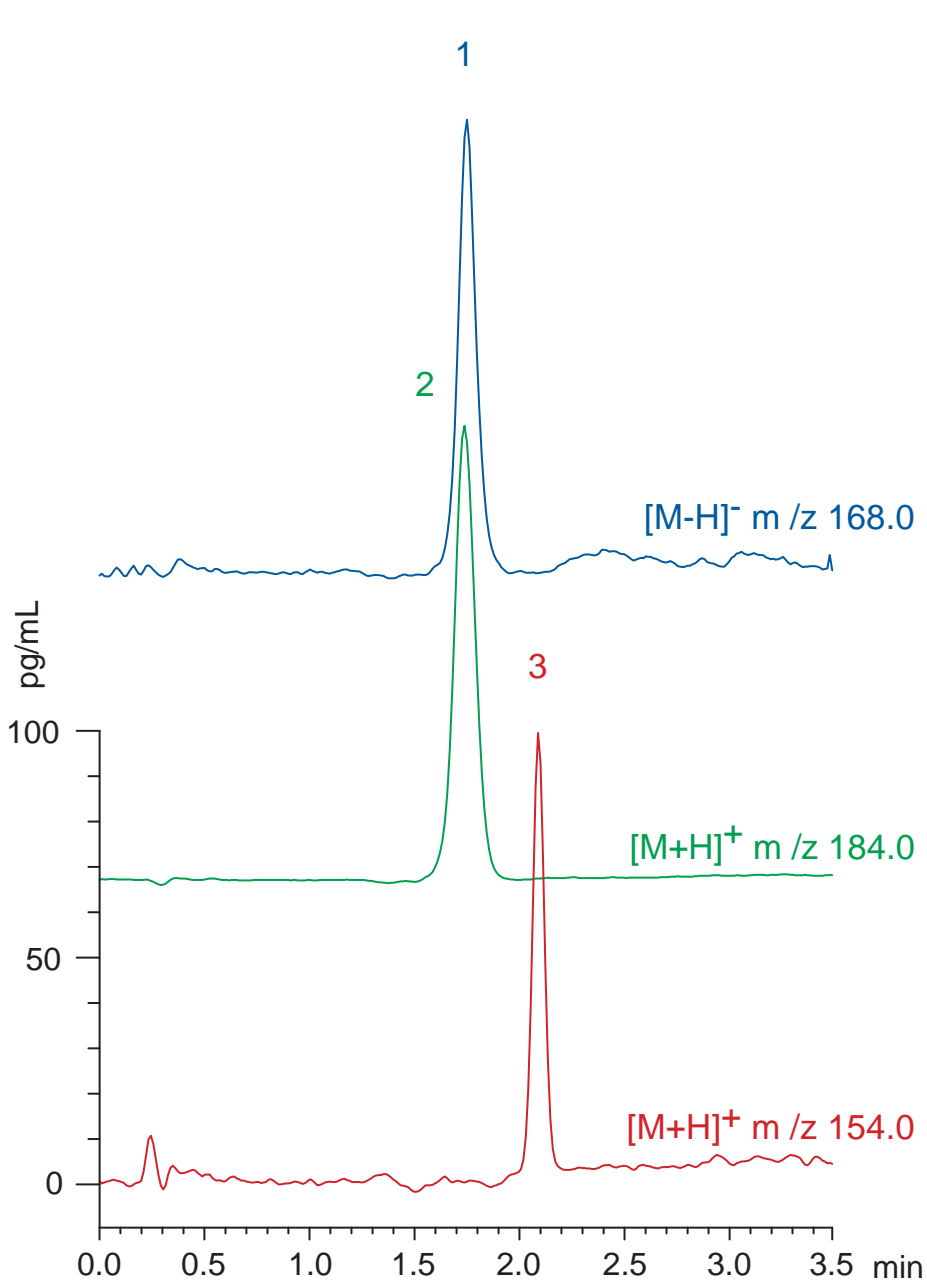
Scherzo SS-C18

30 x 2 mm

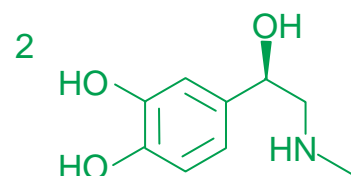
Application

### LC-MS: Catecholamines

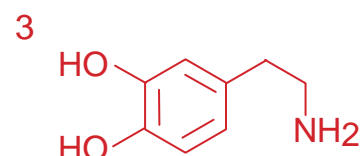
カテコールアミン類のLC-MS分析



L-noradrenaline  
(L-norepinephrine)



L-adrenaline  
(L-epinephrine)



dopamine

Scherzo SS-C18, 30 x 2 mm

A: methanol / water / formic acid = 35 / 65 / 0.5

B: methanol / 100mM ammonium formate = 40 / 60

5 %B (0-0.5 min), 5-100 %B (0.5-2 min), 100 %B (2-3.5 min)

0.3 mL/min (6 MPa), 37°C, 20 uL (100 pg/mL, 1% HCOOH)

Single Quad. MS (ESI, negative, positive)

**Distributor**

LCC Engineering & Trading GmbH, Steinbruchstr. 4, CH-4622 Egerkingen, Switzerland.

www.chromatographyshop.com , info@chromatographyshop.com,

Tel: +41 62 398 52 71 , Fax: +41 62 398 52 74