

Conditions

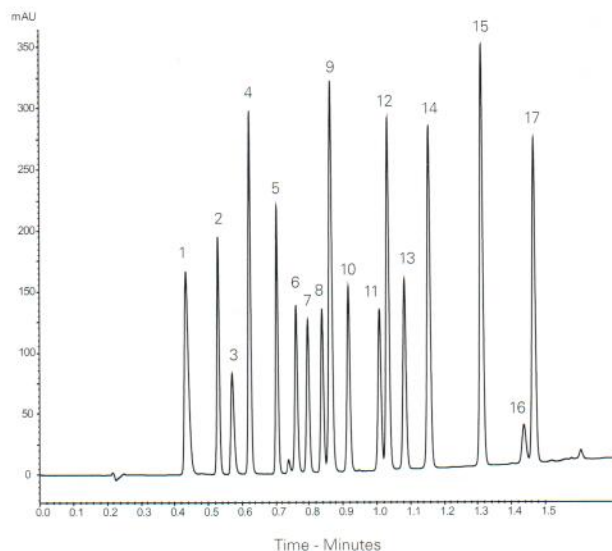
Column: ACE Excel 2 C18-Amide
Dimensions: 100 x 2.1 mm
Part Number: EXL-1012-1002U
Mobile Phase: A: 10 mM ammonium formate pH 2.8 in H₂O
 B: 10 mM ammonium formate pH 2.8 in MeCN/H₂O (90:10 v/v)
Gradient:

Time (mins)	%B
0.0	5
1.5	85

Flow Rate: 1.2 mL/min
Temperature: 42 °C
Detection: UV, 254 nm

Analytes

1. Acesulfame K
2. Theobromine
3. Saccharin
4. Theophylline
5. Caffeine
6. Chlorogenic acid
7. Catechin
8. Epicatechin
9. 4-Hydroxybenzoic acid
10. Vanillin
11. Guaiacol
12. Sorbic acid
13. Ethylvanillin
14. Methyl paraben
15. Ethyl paraben
16. Quercetin
17. Propyl paraben



Available from

LCC
 ENGINEERING & TRADING GmbH
 www.chromatographyshop.com
LCC Engineering & Trading GmbH
 Steinbruchstrasse 4, CH-4622 Egerkingen, Switzerland
 Tel.: +41 62 398 5271, Fax.: +41 62 398 5274
 info@chemsupply.ch
 www.chromatographyshop.com

Reproduced with permission of Shimadzu Europa GmbH. Analysed on Shimadzu Nexera X2.

Clenbuterol in Equine Plasma by LC-MS/MS

Conditions

Column: ACE 3 C18
Dimensions: 100 x 2.1 mm
Part Number: ACE-111-1002
Mobile Phase: A: 0.2% formic acid in H₂O
 B: 0.2% formic acid in MeCN
Gradient:

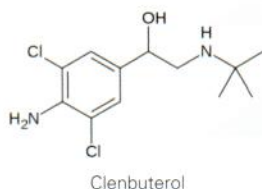
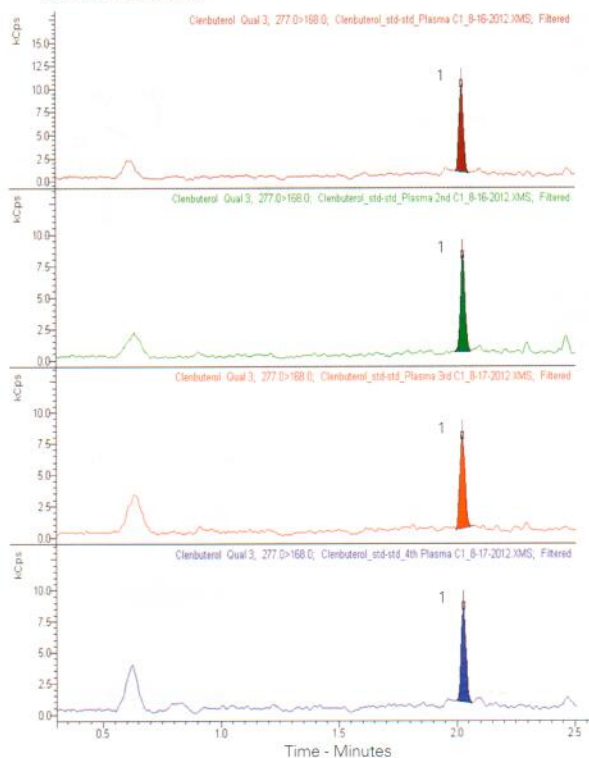
Time (mins)	%B
0.0	10
0.3	10
2.5	95
2.8	10
4.5	10

Flow Rate: 0.45 mL/min
Injection: 30 µL
Detection: Bruker EVOQ Elite triple quad MS
 VIP heated-ESI temperature: 300 °C
 Cone gas temperature: 300 °C
 Spray voltage: +3500 V

Analyte

1. Clenbuterol
 (m/z 277.1 → 168)
 d9-Clenbuterol (IS)
 (m/z 286.1 → 204)

Representative MRM chromatograms of 5 ppt clenbuterol (150 fg on-column)



Reproduced with permission of Bruker UK Ltd (Bruker Application Note #704055)