

Cefquinome by LC-MS

Application #AN3130

Conditions

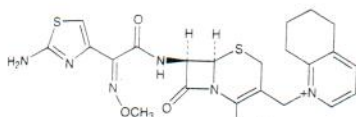
Column: ACE 5 C18
Dimensions: 150 x 2.1 mm
Part Number: ACE-121-1502
Mobile Phase: A: 2 mM formic acid in H₂O
 B: 2 mM formic acid in MeCN
Gradient:

Time (mins)	%B
0	5
1	5
10	95
30	95

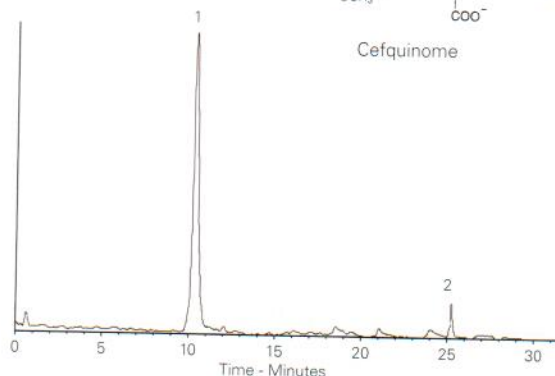
Flow Rate: 0.2 mL/min
Temperature: 25 °C
Detection: ESI-MS (+)

Analytes

1. Cefquinome (*m/z* 529.2)
2. Excipient



Cefquinome



Reproduced with permission of Department of Soil Science, University of Reading, UK

Ciprofibrate from Human Plasma by LC-MS/MS

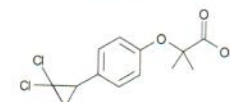
Application #AN2670

Conditions

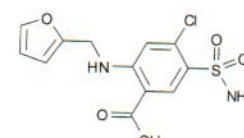
Column: ACE 5 C18
Dimensions: 50 x 4.6 mm
Part Number: ACE-121-0546
Mobile Phase: 0.001% ammonia in MeOH/MeCN/H₂O (70:20:10 v/v/v)
Flow Rate: 1 mL/min
Injection: 20 µL
Temperature: Ambient
Detection: API 3200 triple quad MS
 ESI in negative ion mode
 Ion source temperature: 550 °C
 Ion spray voltage: 4500 V

Analytes

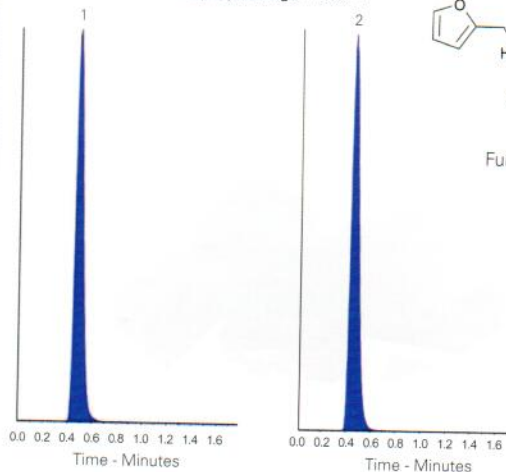
1. Ciprofibrate (*m/z* 287.0 → 85.0)
2. Furosemide (IS) (*m/z* 328.9 → 204.9)



Ciprofibrate



Furosemide (IS)



Reproduced with permission of Indukaka Ipcwala College of Pharmacy, New Vallabh Vidyanagar, Gujarat, India

Chloramphenicol in Milk by LC-MS/MS

Application #AN2030

Conditions

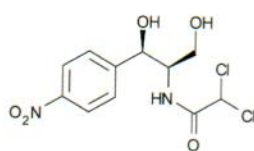
Column: ACE 3 C18
Dimensions: 50 x 2.1 mm
Part Number: ACE-111-0502
Mobile Phase: A: H₂O
 B: MeOH
Gradient:

Time (mins)	%B
0.00	10
0.05	10
2.50	95
3.00	95
3.10	10
4.50	10

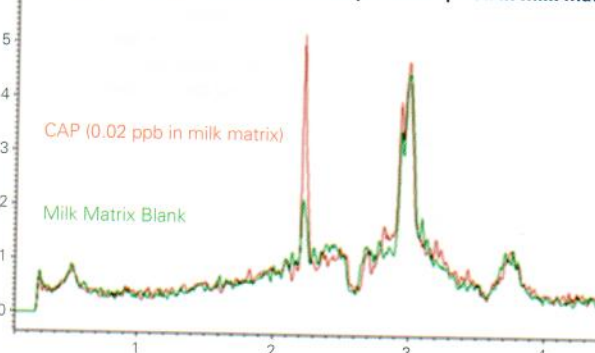
Flow Rate: 0.5 mL/min
Injection: 10 µL
Detection: Bruker EVOQ Elite triple quad MS
 VIP heated-ESI temperature: 400 °C
 Cone gas temperature: 350 °C
 Spray voltage: -4500 V

Analyte

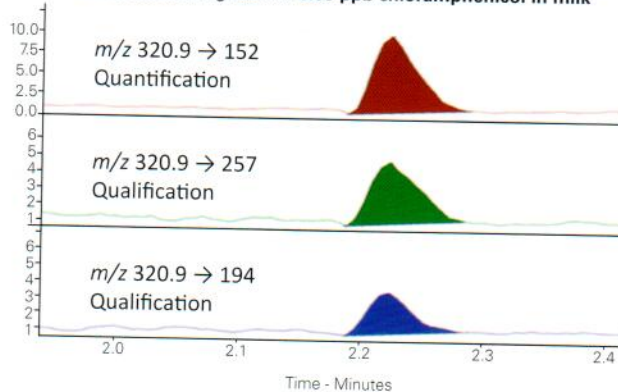
1. Chloramphenicol



TIC of 3 MRMs of 0.02 ppb chloramphenicol spiked in milk matrix



MRM chromatograms of 0.05 ppb chloramphenicol in milk



Available from



LCC Engineering & Trading GmbH
 Steinbruchstrasse 4, CH-4622 Egerkingen, Switzerland
 Tel.: +41 62 398 5271, Fax.: +41 62 398 5274
 info@chemsupply.ch
 www.chromatographyshop.com

Reproduced with permission of Bruker UK Ltd