

Clonidine Hydrochloride Oral Solution Containing Preservatives

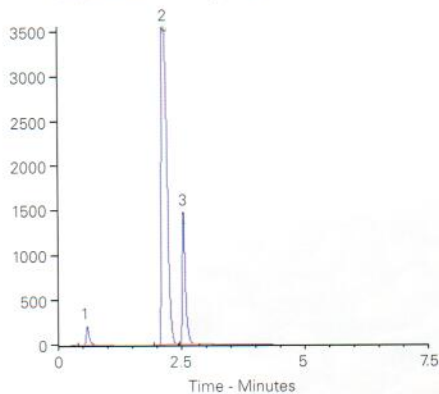
Application #AN2060

Conditions

Column: ACE UltraCore 2.5 SuperC18
Dimensions: 50 x 4.6 mm
Part Number: CORE-25A-0546U
Mobile Phase: A: 0.2% w/v phosphate buffer/
 MeOH/MeCN (80:10:10 v/v/v)
 B: MeCN

Gradient:	Time (mins)	%B
	0.0	0
	0.8	0
	2.1	70
	3.4	70
	3.5	0

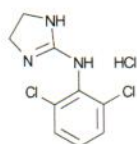
Flow Rate: 2 mL/min
Injection: 100 µL
Temperature: 20 °C
Detection: UV, 220 nm



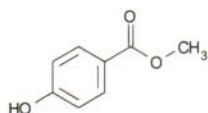
Reproduced with permission of Guy's Hospital, London, UK

Analytes

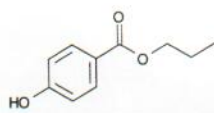
1. Clonidine HCl (10 µg/mL)
2. Methyl paraben (1.5 g/mL)
3. Propyl paraben (1.5 g/mL)



Clonidine HCl



Methyl paraben



Propyl paraben

Clopidogrel and Photodegradation Products

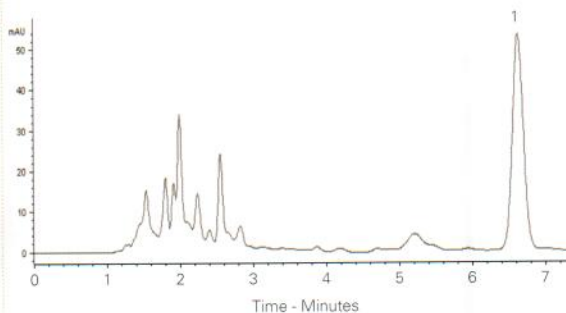
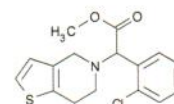
Application #AN3110

Conditions

Column: ACE 5 C18
Dimensions: 150 x 4.6 mm
Part Number: ACE-121-1546
Mobile Phase: MeOH/aqueous TEA
 (pH 5.3 with H₃PO₄) (75:25 v/v)
Flow Rate: 1.2 mL/min
Injection: 20 µL
Temperature: 25 °C
Detection: UV, 220 nm
Sample: Exposed to UV light for 3.5 hours

Analyte

1. Clopidogrel



Reproduced with permission of Brazilian Pharmacopoeia



Available from



LCC Engineering & Trading GmbH

Steinbruchstrasse 4, CH-4622 Egerkingen, Switzerland
 Tel.: +41 62 398 5271, Fax.: +41 62 398 5274

info@chemsupply.ch

www.chromatographyshop.com