

Conditions

Column: ACE Excel 1.7 C18-Amide

Dimensions: 100 x 2.1 mm

Part Number: EXL-1712-1002U

Mobile Phase: A: 0.01% formic acid in H₂O
B: 0.01% formic acid in MeCN

Gradient:

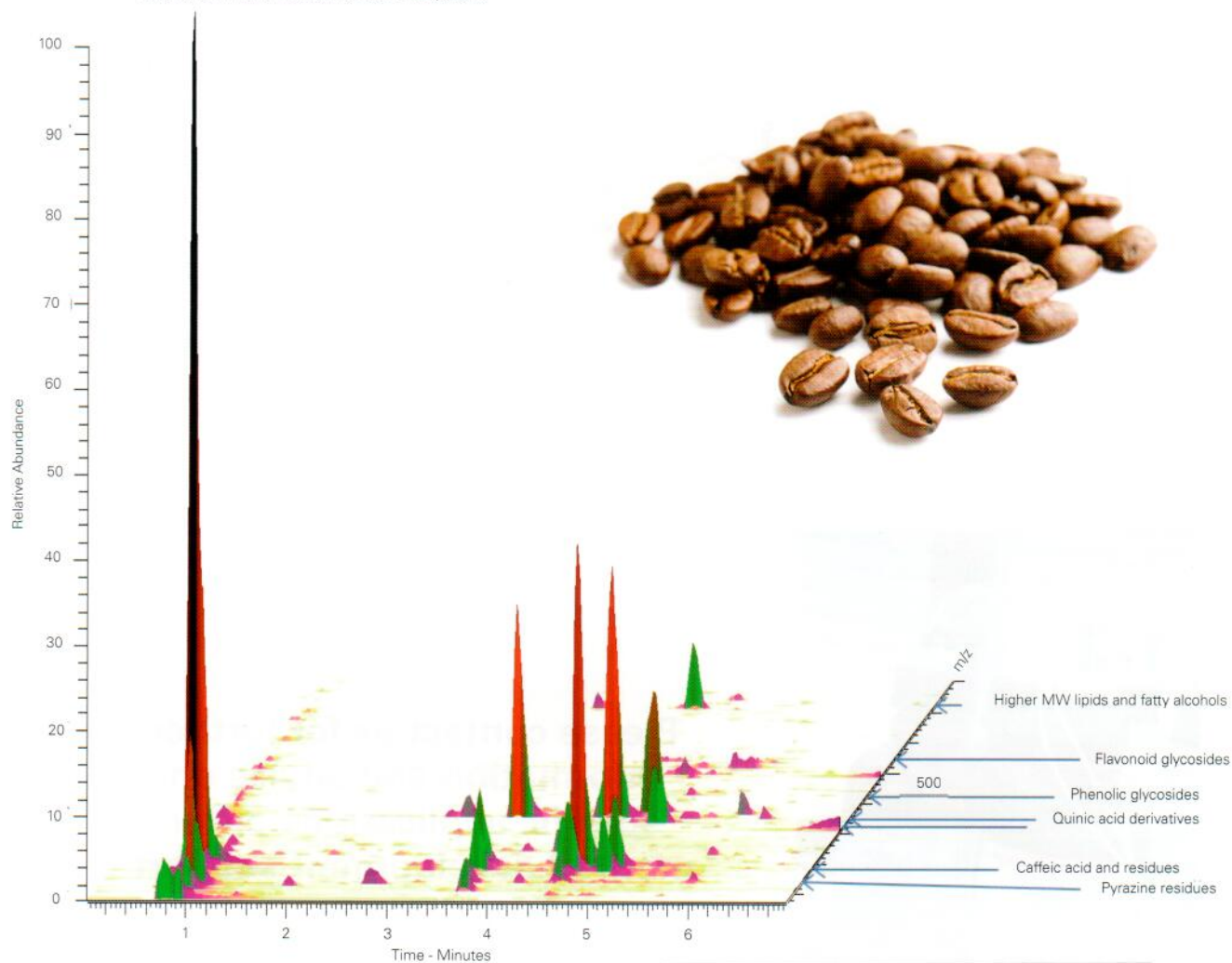
Time (mins)	%B
0.0	3
2.5	10
8.0	100
8.5	3
10.0	3

Flow Rate: 0.5 mL/min

Detection: Exactive accurate mass MS system
ESI in negative ion mode

Analytes between *m/z* 70-800 monitored

Sample: Metabolites from coffee extracted into cold water by vortexing for 20 mins. Samples filtered prior to injection onto column and modular Accela LC system.



Reproduced with permission of School of Pharmacy, University of Nottingham, UK

Available from



LCC Engineering & Trading GmbH

Steinbruchstrasse 4, CH-4622 Egerkingen, Switzerland

Tel.: +41 62 398 5271, Fax.: +41 62 398 5274

info@chemsupply.ch

www.chromatographyshop.com