

Conditions

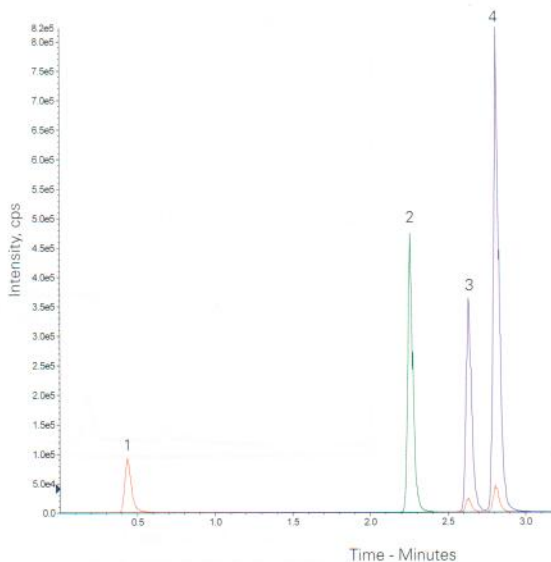
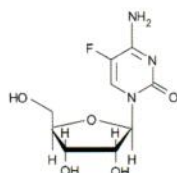
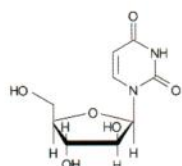
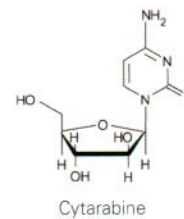
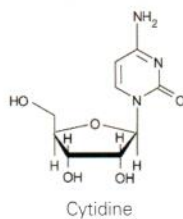
Column: ACE 3 C18
Dimensions: 50 x 2.1 mm
Part Number: ACE-111-0502
Mobile Phase: A: 0.1% perfluoropentanoic acid + 0.1% formic acid in H₂O
 B: 0.1% perfluoropentanoic acid + 0.1% formic acid in MeCN
Gradient:

Time (mins)	%B
0.0	0
0.5	0
3.0	13
4.0	90
5.0	0

Flow Rate: 0.7 mL/min
Detection: API 4000 MS
 TurbolonSpray, positive mode
 Source Temperature 550 °C

Analytes

1. Uracil arabinofuranoside
(*m/z* 245 → 113)
2. 5-Fluorocytidine (IS)
(*m/z* 262 → 130)
3. Cytidine
(*m/z* 244 → 112)
4. Cytarabine
(*m/z* 244 → 112)



Available from

LCC Engineering & Trading GmbH
 Steinbruchstrasse 4, CH-4622 Egerkingen, Switzerland
 Tel.: +41 62 398 5271, Fax: +41 62 398 5274
info@chemsupply.ch
www.chromatographyshop.com

Reproduced with permission of Agilux Laboratories, USA

Cytotoxic Agents by UHPLC-MS/MS

Conditions

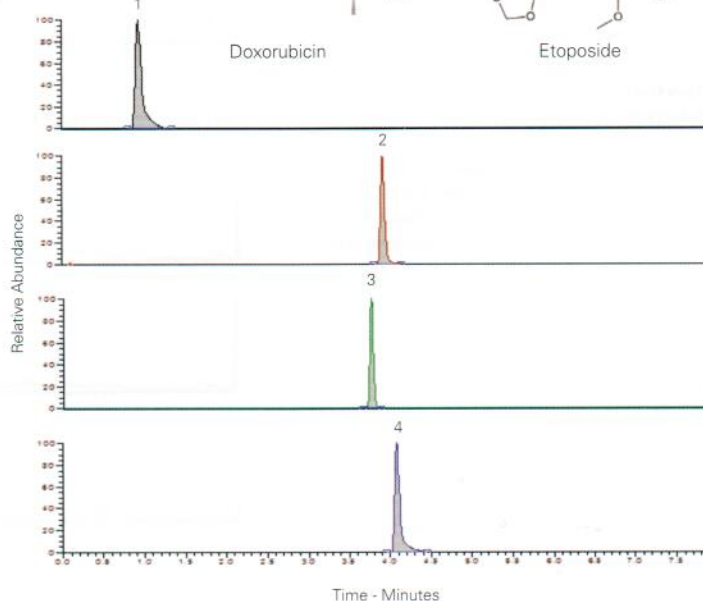
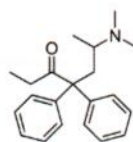
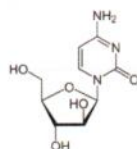
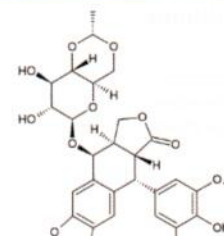
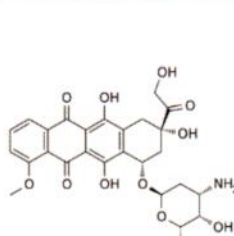
Column: ACE UltraCore 2.5 SuperC18
Dimensions: 100 x 2.1 mm
Part Number: CORE-25A-1002U
Mobile Phase: A: 0.1% formic acid in H₂O
 B: 0.1% formic acid in MeCN
Gradient:

Time (mins)	%B
0.0	2
1.0	2
3.0	80
5.0	80
5.1	2
8.0	2

Flow Rate: 0.25 mL/min
Detection: Thermo Vantage triple quadrupole MS
 MRM +ve ESI mode
 Spray voltage: 3500 V
 Nitrogen sheath and auxiliary gas
 CID with argon: 1.5 mTorr

Analytes

1. AraC
(*m/z* 244.1 → 112.2)
2. Methadone
(*m/z* 310.2 → 265.3)
3. Doxorubicin
(*m/z* 544.2 → 361.2)
4. Etoposide
(*m/z* 589.2 → 185.1)



Reproduced with permission of Barts Cancer Institute, Queen Mary University of London