

Conditions

Column: ACE Excel 2 C18-PFP
Dimensions: 50 x 3.0 mm
Part Number: EXL-1010-0503U
Mobile Phase: A: 10 mM ammonium formate pH 3.0 in H₂O
 B: 10 mM ammonium formate pH 3.0 in MeOH/H₂O (9:1 v/v)

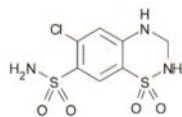
Gradient:

Time (mins)	%B
0.0	5
0.5	5
5.0	70
5.5	70
6.0	5

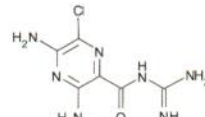
Flow Rate: 1 mL/min
Injection: 2 µL
Temperature: 60 °C
Detection: UV, 254 nm

Analytes

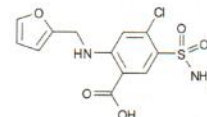
1. Hydrochlorothiazide
2. Amiloride
3. Furosemide
4. Indapamide
5. Bendroflumethiazide
6. Spironolactone



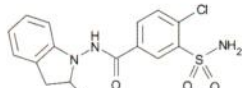
Hydrochlorothiazide



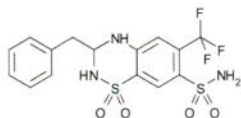
Amiloride



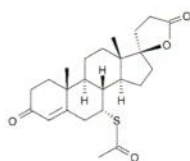
Furosemide



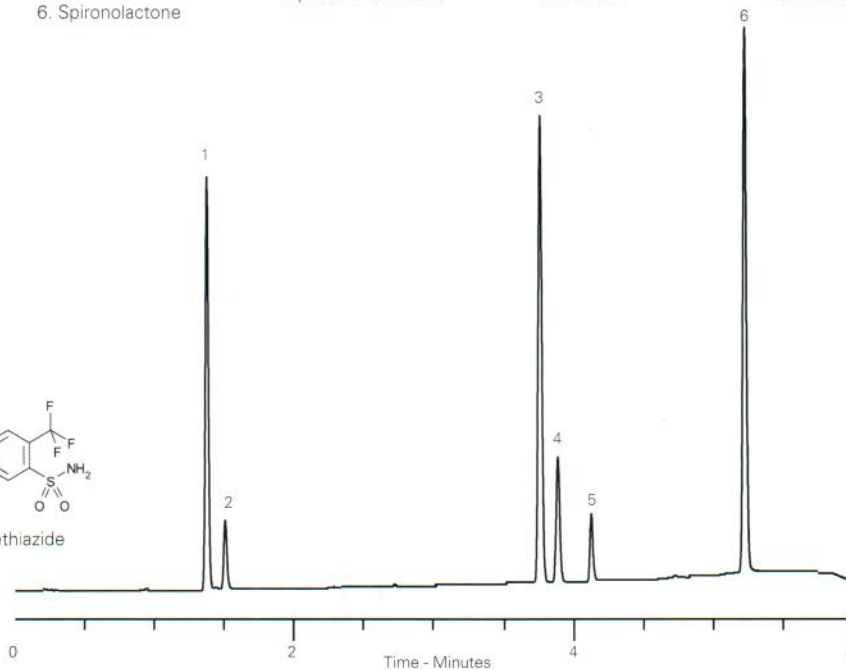
Indapamide



Bendroflumethiazide



Spironolactone



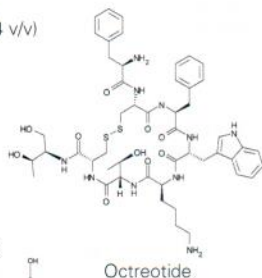
DOTATATE and Octreotide

Conditions

Column: ACE 3 C18
Dimensions: 150 x 3.0 mm
Part Number: ACE-111-1503
Mobile Phase: 0.1% TFA in H₂O/MeCN (76:24 v/v)
Flow Rate: 0.6 mL/min
Injection: 20 µL
Detection: UV, 220 nm

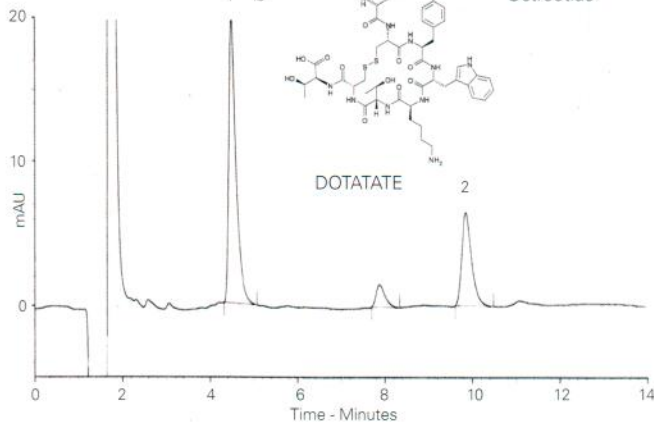
Analytes

1. DOTATATE
2. Octreotide



Octreotide

DOTATATE



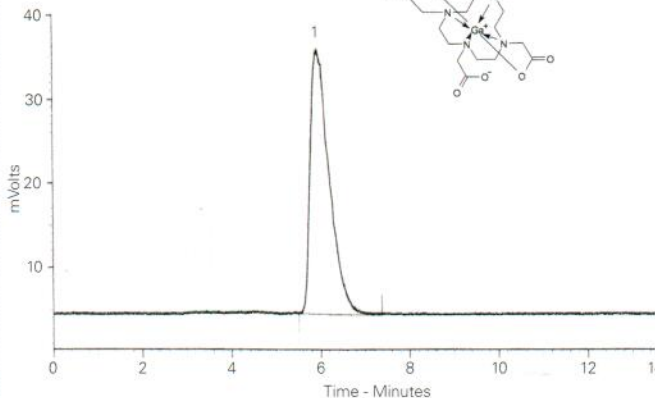
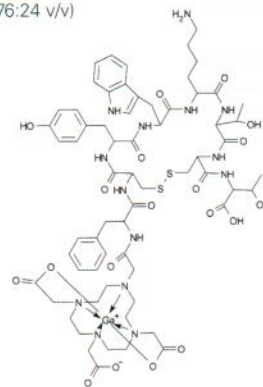
⁶⁸Ga-DOTATATE QC Analysis by Radiometric Detection

Conditions

Column: ACE 3 C18
Dimensions: 150 x 3.0 mm
Part Number: ACE-111-1503
Mobile Phase: 0.1% TFA in H₂O/MeCN (76:24 v/v)
Flow Rate: 0.6 mL/min
Injection: 20 µL
Detection: Radiometric

Analyte

1. ⁶⁸Ga-DOTATATE



Reproduced with permission of Centre of Radiopharmaceutical Science, University Hospital Zurich, Switzerland

Reproduced with permission of Centre of Radiopharmaceutical Science, University Hospital Zurich, Switzerland