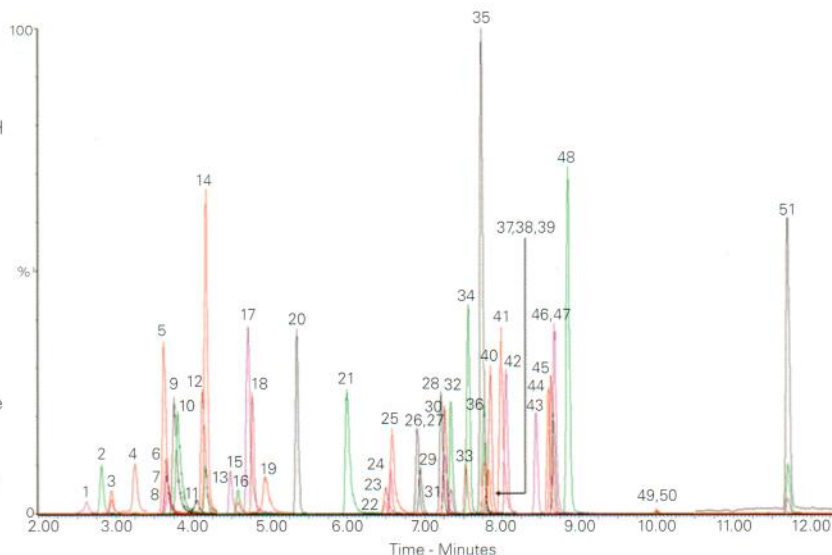


Conditions

Column: ACE Excel 1.7 C18
 Dimensions: 100 x 2.1 mm
 Part Number: EXL-171-1002U
 Mobile Phase: A: 5 mM ammonium acetate in H₂O
 B: 5 mM ammonium acetate in MeOH
 Gradient: Time (mins) %B
 0.0 10
 10.0 90
 11.9 90
 13.4 10
 15.5 10
 Flow Rate: 0.3 mL/min
 Injection: 10 µL
 Temperature: 40 °C
 Detection: MS Quattro Premier XE triple quad
 MRM, positive and negative ESI mode
 Desolvation temperature: 450 °C
 Ion source temperature: 150 °C
 Collision gas pressure: 3.5 x 10⁻³ mbar



Reproduced with permission of Biotage GB Ltd, UK

Peak	Analyte	R _t (Mins)	Q1 (Da)	Q3 (Da)	Peak	Analyte	R _t (Mins)	Q1 (Da)	Q3 (Da)
1	Oxymorphone	2.62	302.2	198.1	27	Bromazepam	6.95	316.1	182.1
2	Morphine-d3	2.82	289.2	201.0	28	Ketamine	7.21	238.1	124.9
3	Morphine	2.95	286.2	201.0	29	Clonazepam	7.26	316.1	270.1
4	Hydromorphone	3.25	286.2	185.1	30	Nitrazepam	7.26	282.2	236.1
5	Amphetamine-d5	3.62	141.0	123.9	31	α-Hydroxytriazolam	7.34	359.1	331.1
6	Amphetamine	3.65	136.0	118.9	32	Flunitrazepam	7.34	314.2	268.2
7	Dihydrocodeine	3.66	302.2	199.1	33	α-Hydroxyalprazolam	7.54	325.2	297.1
8	MDA	3.67	180.1	105.0	34	Estazolam	7.56	295.2	267.2
9	MDMA	3.75	194.1	163.0	35	Zolpidem	7.73	308.2	235.1
10	Methamphetamine	3.80	150.0	90.9	36	Triazolam	7.77	343.0	308.1
11	Oxycodone	4.03	316.2	241.2	37	2-Hydroxyethylflurazepam	7.77	333.2	109.0
12	MDEA	4.12	208.2	163.0	38	Lorazepam	7.80	321.1	275.1
13	BZE-d3	4.15	293.1	171.0	39	Oxazepam	7.82	287.2	241.0
14	BZE	4.17	290.1	168.0	40	Alprazolam	7.85	309.2	281.2
15	6-MAM	4.48	328.2	165.1	41	Methadone	7.99	310.2	265.2
16	Codeine	4.59	300.3	215.1	42	Temazepam	8.05	301.1	255.1
17	Norfentanyl	4.71	233.1	84.0	43	Nordiazepam	8.44	271.1	139.9
18	7-Amino-clonazepam	4.77	286.2	121.0	44	Midazolam	8.61	326.2	291.2
19	Hydrocodone	4.94	300.2	199.1	45	Diazepam-d5	8.63	290.2	154.0
20	7-Amino-flunitrazepam	5.34	284.2	135.0	46	Diazepam	8.67	285.2	154.0
21	Cocaine	5.99	304.2	182.0	47	Flurazepam	8.68	388.2	315.1
22	Norbuprenorphine	6.47	414.3	101.0	48	Fentanyl	8.85	337.3	105.0
23	PCP	6.49	244.2	159.9	49	THC-COOH-d3	9.98	348.2	302.2
24	Zaleplon	6.55	306.2	264.2	50	THC-COOH	10.01	345.2	299.2
25	EDDP	6.58	278.2	234.2	51	Buprenorphine	11.70	468.3	101.0
26	Norketamine	6.90	224.1	124.9					

Available from



LCC Engineering & Trading GmbH
 Steinbruchstrasse 4, CH-4622 Egerkingen, Switzerland
 Tel.: +41 62 398 5271, Fax.: +41 62 398 5274
info@chemsupply.ch
www.chromatographyshop.com