

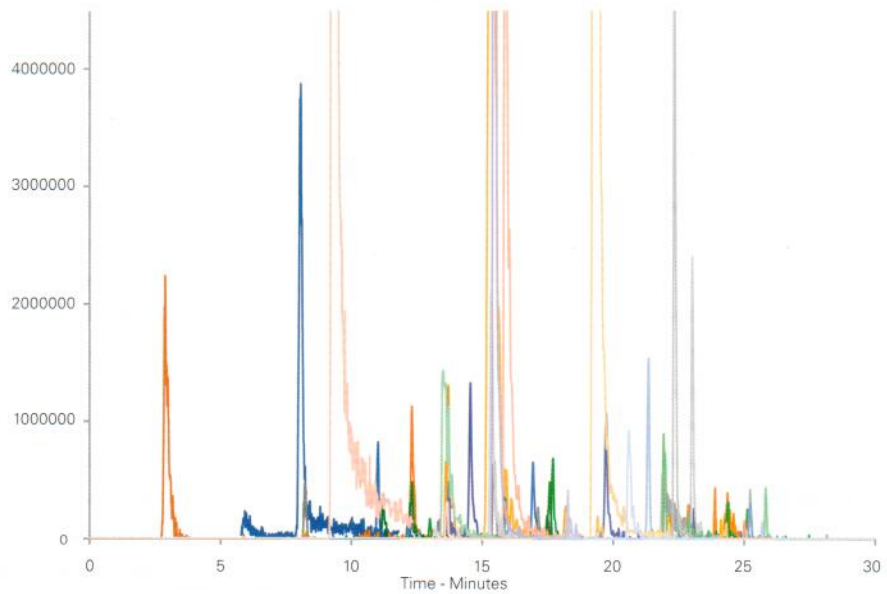
Conditions

Column: ACE Excel 2 C18-PFP
Dimensions: 100 x 2.1 mm
Part Number: EXL-1010-1002U
Mobile Phase: A: 2 mM ammonium acetate + 0.1% formic acid in H₂O
 B: 2 mM ammonium acetate + 0.1% formic acid in MeOH
Gradient:

Time (mins)	%B
0	2
4	2
34	100
38	100
40	2

Flow Rate: 0.3 mL/min
Injection: 10 µL
Temperature: 37 °C
Detection: Thermo Quantum Ultra MS
 ESI in positive ion mode

Analytes in blue are included in Extracted Ion Chromatogram



Reproduced with permission of Toxicology, Clinical Chemistry, Wansbeck General Hospital, Northumberland, UK

Analyte	R _t (Mins)	MRM Transitions (m/z)	Analyte	R _t (Mins)	MRM Transitions (m/z)
6-Acetylcodeine	16.9	342.2 > 165.1	Buphedrone	14.2	178.2 > 160.1
Alfentanil	21.1	417.4 > 197.2	Buphedrone ephedrine	13.5	180.4 > 162.2
Alprazolam	23.3	309.11 > 205.1	Bupivacaine	19.5	289.2 > 84.2
Aminoclonazepam	13.9	286.2 > 222.3	Buprenorphine glucuronide	18.1	644.4 > 468.4
Aminodesmethylflunitrazepam	20.0	270.1 > 121.1	Bupropion	19.5	240.1 > 131.1
Aminoflunitrazepam	16.2	284.1 > 135.1	Butylone	14.7	222.1 > 131.1
Aminonitrazepam	10.9	252.1 > 94.1	Caffeine	13.1	195.1 > 110.1
Aminorex	12.2	163 > 120.1	Camfetamine	18.7	202.2 > 67.1
Amiodarone	31.3	646.2 > 100	Carbamazepine	21.5	237.1 > 192.2
Amisulpride	16.2	370.1 > 242	Carbamazepine 10,11-Epoxide	18.6	253.2 > 180.1
Amitriptyline	24.4	278.2 > 91.1	Cathine	20.0	134.2 > 91.1
Amlodipine	25.3	409.3 > 238.2	Cathinone	9.5	150.2 > 117.1
Amlodipine met	22.9	407 > 318	2C-B-FLY	20.1	286 > 269.1
Amphetamine	11.6	136.1 > 65.2	Chlordiazepoxide	19.5	300.1 > 227.1
Amphetamine-d6	11.6	142.2 > 67.2	Chloroquine	18.5	320.1 > 142.1
Anhydroecgonine methyl ester	9.8	182.2 > 91.1	Chlorpheniramine	20.4	275.1 > 167.2
Aripiprazole	25.5	448.1 > 285.1	Chlorpromazine	25.9	319.2 > 58.1
Atenolol	10.7	267.1 > 145.1	Citalopram	22.2	325.1 > 246.1
Atomoxetine	23.1	256.2 > 44.1	Clobazam	22.8	301.1 > 259.2
Atomoxetine metabolite	22.5	242.2 > 44.1	Clomethiazole	17.3	161.9 > 113
Benzedrone	21.7	254 > 65.1	Clomipramine	27.0	315.1 > 86.1
Benzoyllecgonine	15.6	290.1 > 77.2	Clonazepam	23.1	316.1 > 214.2
Benzoyllecgonine-d3	15.6	293.2 > 77.2	Clonidine	13.2	230 > 44.2
Benzylpiperazine	5.1	177.2 > 65.1	Clozapine	21.7	327.1 > 192.1
Bisoprolol	19.9	326.3 > 116.1	Cocaethylene	19.5	318.2 > 82.2
Bromazepam	20.4	316 > 182.1	Cocaine	18.0	304.2 > 82.2