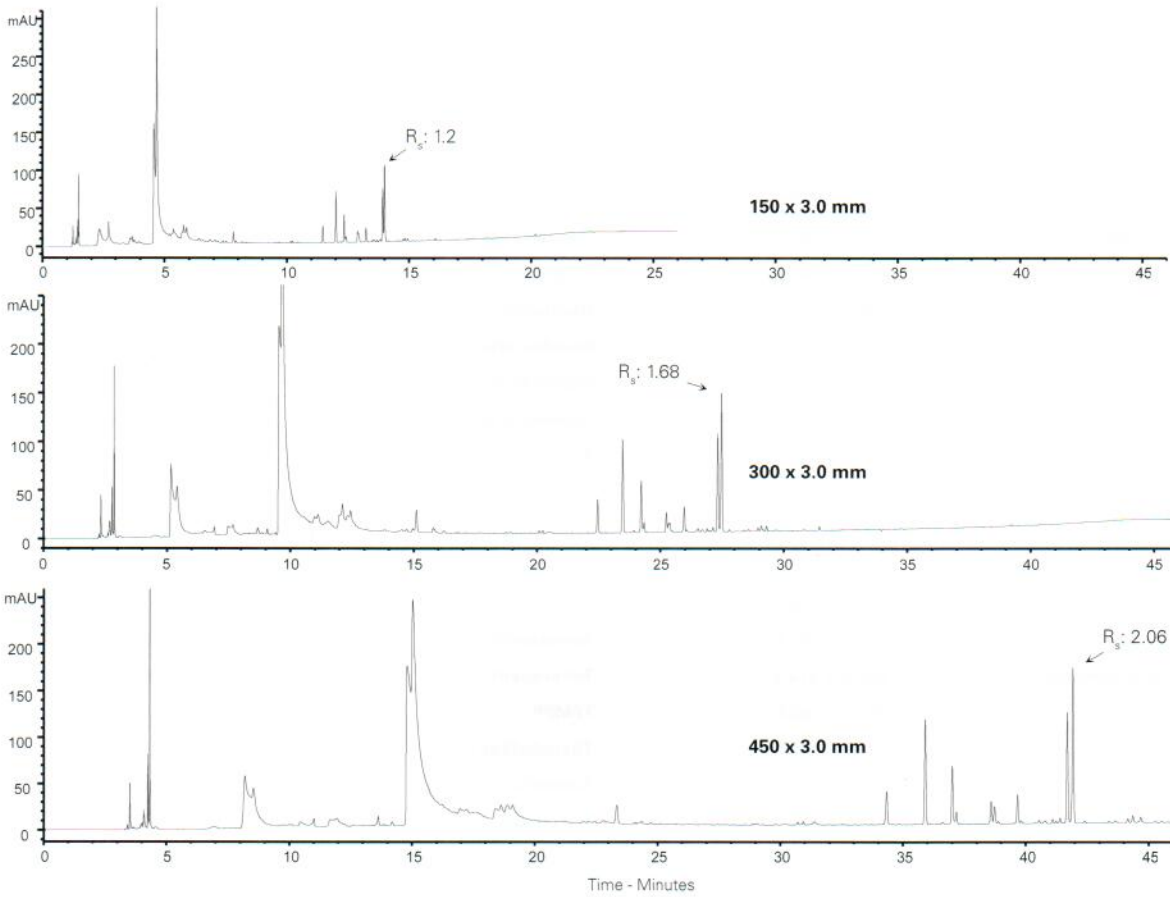


**Conditions**

**Column:** ACE UltraCore 2.5 SuperC18  
**Dimensions:** 150 x 3.0 mm; 2 x 150 x 3.0 mm (coupled); 3 x 150 x 3.0 mm (coupled)  
**Part Number:** CORE-25A-1503U  
**Mobile Phase:** A: 0.1% formic acid in H<sub>2</sub>O  
 B: 0.1% formic acid in MeCN

Gradient:	Time (mins)			%B
	150 x 3.0 mm	300 x 3.0 mm	450 x 3.0 mm	
-	0.00	0.00	0.00	5
0.00	0.47	0.94	0.94	5
20.00	40.47	60.94	60.94	100
25.00	45.47	75.94	75.94	100
26.00	46.47	76.94	76.94	5
46.00	86.47	136.94	136.94	5

**Flow Rate:** 0.43 mL/min  
**Temperature:** 80 °C  
**Detection:** UV, 254 nm



Available from



**LCC Engineering & Trading GmbH**  
 Steinbruchstrasse 4, CH-4622 Egerkingen, Switzerland  
 Tel.: +41 62 398 5271, Fax.: +41 62 398 5274  
 info@chemsupply.ch  
[www.chromatographyshop.com](http://www.chromatographyshop.com)