

Entacapone

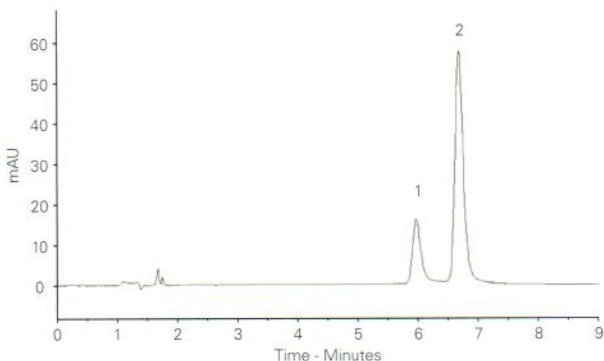
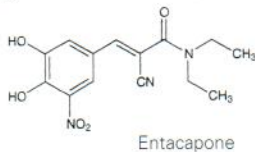
Application #AN3600

Conditions

Column: ACE 5 C18
Dimensions: 250 x 4.6 mm
Part Number: ACE-121-2546
Mobile Phase: Phosphoric acid pH 3.0/MeCN (65:35 v/v)
Flow Rate: 2.0 mL/min
Injection: 20 µL
Temperature: 25 °C
Detection: UV, 305 nm
Sample: Entacapone standard in MeOH solution exposed to direct UV radiation (254 nm)

Analytes

- Degradation Product
- Entacapone



Reproduced with permission of Brazilian Pharmacopoeia

Epanolol

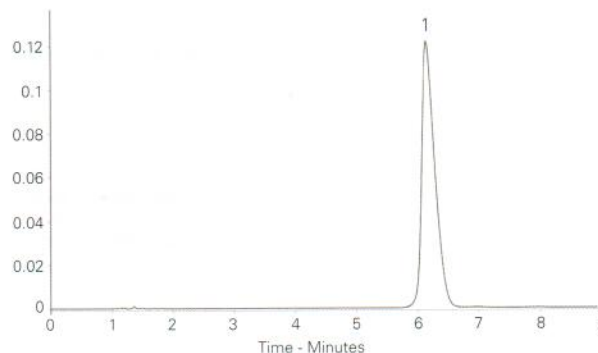
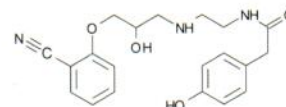
Application #AN3610

Conditions

Column: ACE 5 CN
Dimensions: 150 x 4.6 mm
Part Number: ACE-124-1546
Mobile Phase: 20 mM ammonium formate pH 3.0/MeOH (85:15 v/v)
Flow Rate: 1 mL/min
Injection: 20 µL
Temperature: Ambient
Detection: UV, 254 nm

Analyte

- Epanolol



Reproduced with permission of School of Pharmacy, University of Sunderland, UK

Epinastine

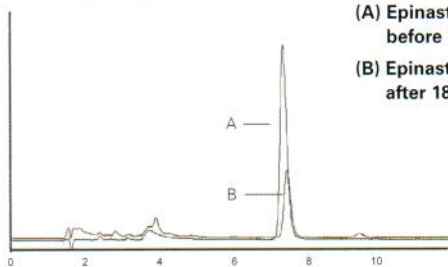
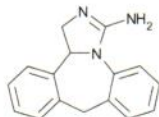
Application #AN3620

Conditions

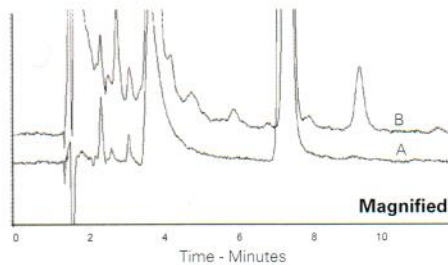
Column: ACE 5 C18
Dimensions: 150 x 4.6 mm
Part Number: ACE-121-1546
Mobile Phase: 0.3% TEA pH 4.0 with phosphoric acid/MeOH (60:40 v/v)
Flow Rate: 1 mL/min
Injection: 20 µL
Temperature: 25 °C
Detection: UV, 254 nm

Analyte

- Epinastine



(A) Epinastine Hydrochloride before UV radiation
 (B) Epinastine Hydrochloride after 18 hours UV radiation



Reproduced with permission of Brazilian Pharmacopoeia

Ethanol Extract from Seed Cover (*Acacia Farnesiana*)

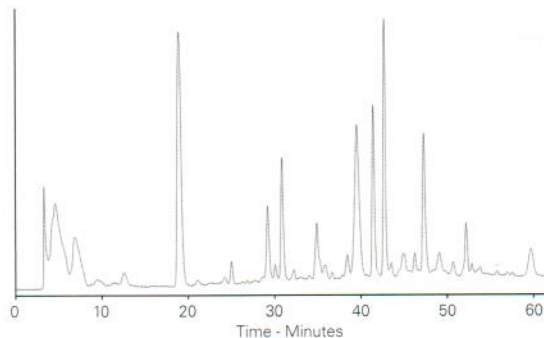
Application #AN2900

Conditions

Column: ACE 5 C18
Dimensions: 250 x 4.6 mm
Part Number: ACE-121-2546
Mobile Phase: A: MeOH
 B: H₂O
Gradient:

Time (mins)	%B
0.0	85
2.5	85
60.0	50
62.5	50
70.0	85

Flow Rate: 2.0 mL/min
Temperature: Ambient
Detection: UV, 230 nm



Reproduced with permission of School of Pharmacy, University of Sunderland, UK