

**Conditions**

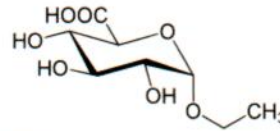
**Column:** ACE Excel 2 C18-PFP  
**Dimensions:** 100 x 2.1 mm  
**Part Number:** EXL-1010-1002U  
**Mobile Phase:** A: 0.05% formic acid in H<sub>2</sub>O  
 B: MeOH  
**Gradient:**

Time (mins)	%B
0.00	5
4.00	70
6.00	95
7.00	95
7.01	5

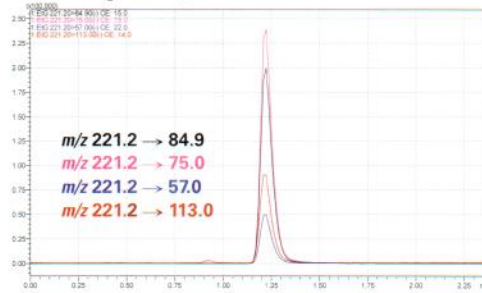
  
**Flow Rate:** 0.4 mL/min  
**Injection:** 3 µL  
**Temperature:** 40 °C  
**Detection:** Shimadzu LCMS-8050  
 ESI voltage: -3 kV  
 Desolvation line: 250 °C  
 Interface heater: 380 °C  
 Nebulizing gas: 3 L/min  
 Heat block: 400 °C

**Analyte**

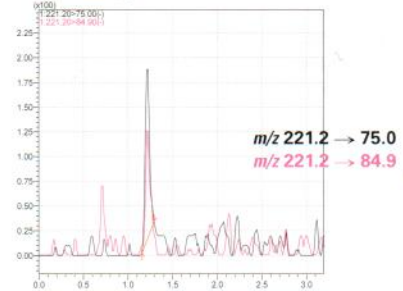
1. Ethyl glucuronide



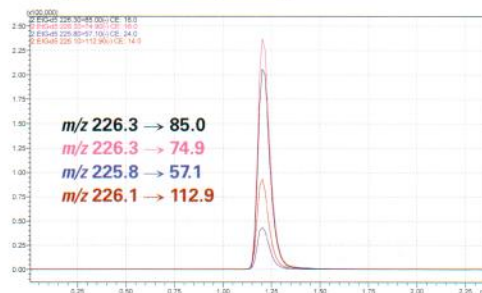
**Ethyl glucuronide (EtG)**  
 LOQ in H<sub>2</sub>O 300 fg on-column



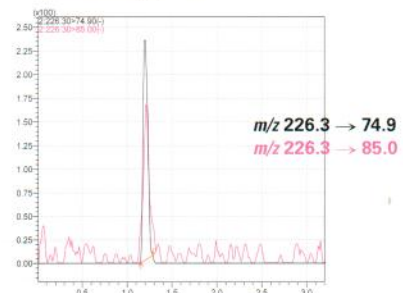
**EtG 100 pg/mL**



**Ethyl glucuronide-d5 (EtG-d5)**



**EtG-d5 100 pg/mL**



Reproduced with permission of Shimadzu Europa GmbH. Analysed on Shimadzu Nexera X2

**Exploiting Selectivity by Adjusting pH**

**Conditions**

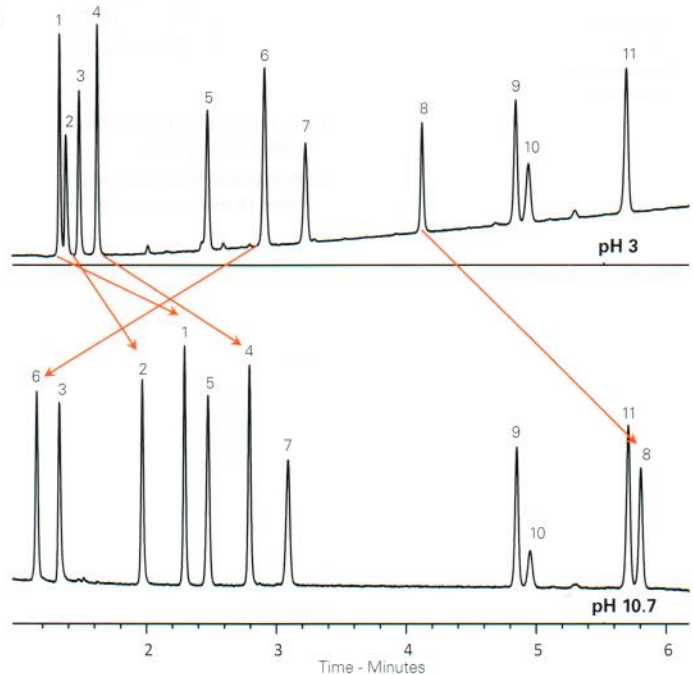
**Column:** ACE Excel 2 SuperC18  
**Dimensions:** 50 x 2.1 mm  
**Part Number:** EXL-1011-0502U  
**Mobile Phase:** A1: 10 mM ammonium formate pH 3.0 in H<sub>2</sub>O  
 A2: 0.1% ammonia pH 10.7 in H<sub>2</sub>O  
 B1: 10 mM ammonium formate pH 3.0 in MeCN/H<sub>2</sub>O (90:10 v/v)  
 B2: 0.1% ammonia pH 10.7 in MeCN/H<sub>2</sub>O (90:10 v/v)  
**Gradient:**

Time (mins)	%B
0.0	3
7.0	100
8.0	100
8.5	3
12.5	3

  
**Flow Rate:** 0.42 mL/min  
**Injection:** 2 µL  
**Temperature:** 40 °C  
**Detection:** UV, 254 nm

**Analytes**

1. Nizatidine
2. Salbutamol
3. Amiloride
4. N-Acetylprocainamide
5. Quinoxaline
6. Methyl paraben
7. p-Cresol
8. Reserpine
9. Piperine
10. Toluene
11. Felodipine



available from



**LCC Engineering & Trading GmbH**

Steinbruchstrasse 4, CH-4622 Egerkingen, Switzerland

Tel.: +41 62 398 5271, Fax.: +41 62 398 5274

info@chemsupply.ch

www.chromatographyshop.com