

Explosive Analytes (I)

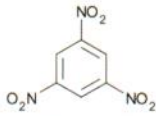
Application #AN1460

Conditions

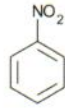
Column: ACE 5 C18
Dimensions: 150 x 4.6 mm
Part Number: ACE-121-1546
Mobile Phase: MeOH/H₂O (50:50 v/v)
Flow Rate: 1 mL/min
Injection: 5 µL
Temperature: 20 °C
Detection: UV, 254 nm

Analytes

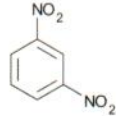
- 1,3,5-Trinitrobenzene
- Nitrobenzene
- 1,3-Dinitrobenzene
- 2,4-Dinitrotoluene



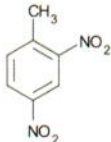
1,3,5-Trinitrobenzene



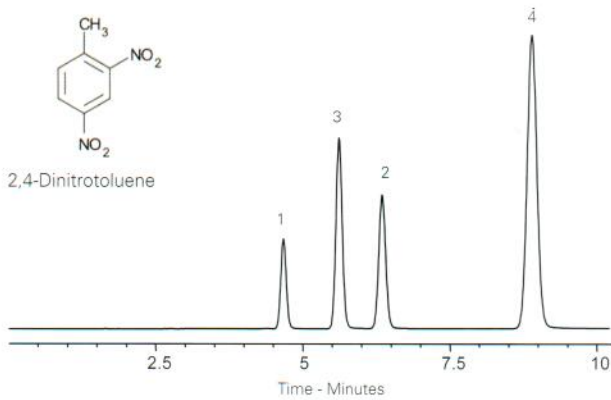
Nitrobenzene



1,3-Dinitrobenzene



2,4-Dinitrotoluene



Explosive Analytes (II)

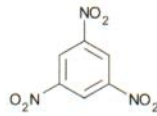
Application #AN1470

Conditions

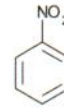
Column: ACE 5 CN-ES
Dimensions: 150 x 4.6 mm
Part Number: EXL-1213-1546U
Mobile Phase: MeOH/H₂O (50:50 v/v)
Flow Rate: 1 mL/min
Injection: 5 µL
Temperature: 20 °C
Detection: UV, 254 nm

Analytes

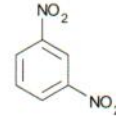
- 1,3,5-Trinitrobenzene
- Nitrobenzene
- 1,3-Dinitrobenzene
- 2,4-Dinitrotoluene



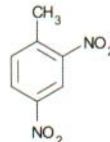
1,3,5-Trinitrobenzene



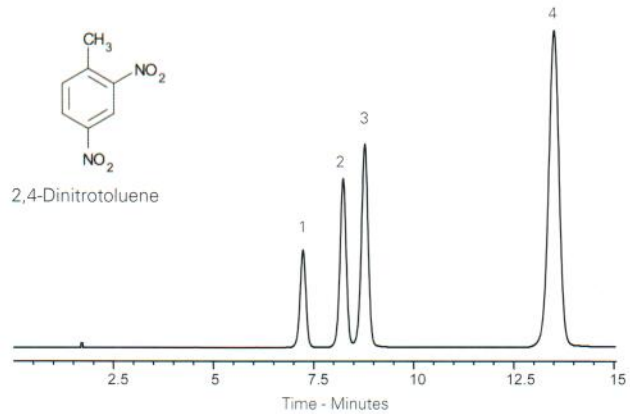
Nitrobenzene



1,3-Dinitrobenzene



2,4-Dinitrotoluene



Fingerprinting of *Cuscuta Chinensis* Flavonoids

Application #AN4250

Conditions

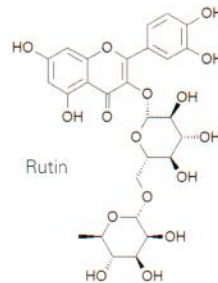
Column: ACE 5 C18
Dimensions: 250 x 4.6 mm
Part Number: ACE-121-2546
Mobile Phase: A: 0.25% o-phosphoric acid in H₂O
 B: MeCN
Gradient:

Time (mins)	%B
0	5
2	5
7	10
10	15
23	20
28	30
32	50

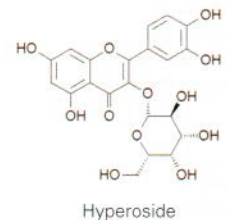
Flow Rate: 1 mL/min
Injection: 10 µL
Detection: UV, 360 nm

Analytes

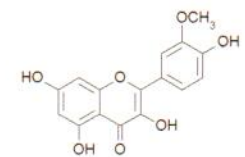
1. Rutin
2. Hyperoside
3. Isorhamnetin
4. Kaempferol



Rutin



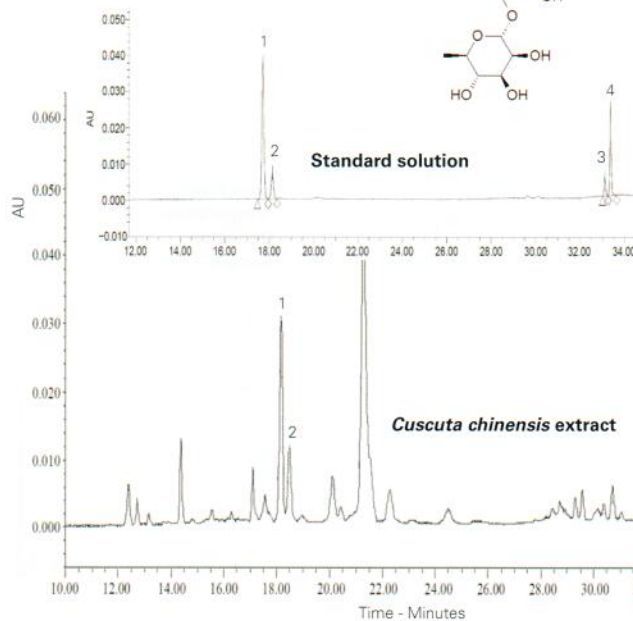
Hyperoside



Isorhamnetin



Kaempferol



Cuscuta chinensis is used in traditional medicines in eastern and southern Asia

Shekarchi M, Kondori BM, Hajimehdiipoor H, Abdi L, Naseri M, Pourfarzib M, Amin G. (2014) Finger Printing and Quantitative Analysis of *Cuscuta chinensis* Flavonoid Contents from Different Hosts by RP-HPLC. Food and Nutrition Sciences, 5, 914-921. <http://dx.doi.org/10.4236/fns.2014.510101>