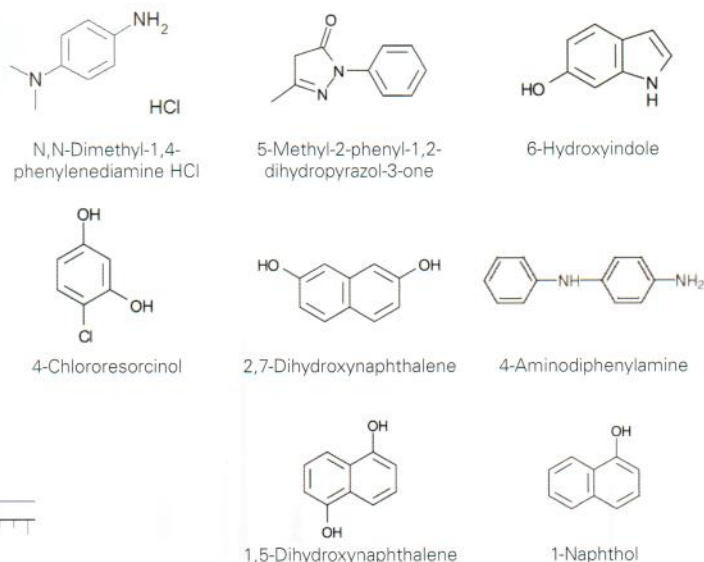
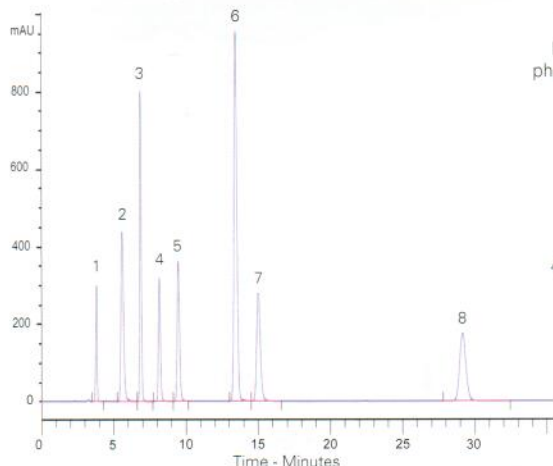


Conditions

Column: ACE Excel 5 C18-Amide
Dimensions: 250 x 4.6 mm
Part Number: EXL-1212-2546U
Mobile Phase: 1.8 g disodium phosphate dodecahydrate + 2.8 g potassium dihydrogen phosphate + 1.0 g sodium 1-heptanesulfonate (all diluted to 1.0 L with water)/ MeCN (60:40 v/v)
Flow Rate: 1 mL/min
Temperature: 60 °C
Detection: UV, 280 nm

Analytes

1. N,N-Dimethyl-1,4-phenylenediamine HCl
2. 5-Methyl-2-phenyl-1,2-dihydropyrazol-3-one
3. 6-Hydroxyindole
4. 4-Chlororesorcinol
5. 2,7-Dihydroxynaphthalene
6. 4-Aminodiphenylamine
7. 1,5-Dihydroxynaphthalene
8. 1-Naphthol



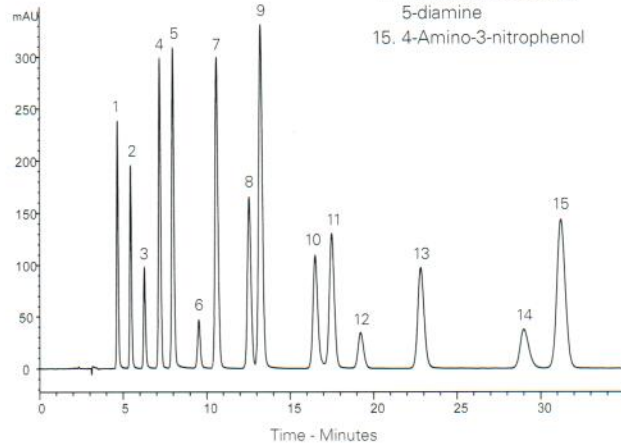
Hair Dye Restricted Components (II)

Conditions

Column: ACE Excel 5 C18-Amide
Dimensions: 250 x 4.6 mm
Part Number: EXL-1212-2546U
Mobile Phase: 1.8 g disodium phosphate dodecahydrate + 2.8 g potassium dihydrogen phosphate + 1.0 g sodium 1-heptanesulfonate (all diluted to 1.0 L with water)/MeCN (60:40 v/v)
Flow Rate: 1 mL/min
Temperature: 25 °C
Detection: UV, 280 nm

Analytes

1. p-Phenylenediamine
2. p-Aminophenol
3. Toluene-2,5-diamine
4. m-Aminophenol
5. o-Phenylenediamine
6. 2-Chloro-p-phenylenediamine
7. o-Aminophenol
8. Resorcinol
9. 2-Nitro-p-phenylenediamine
10. Toluene-3,4-diamine
11. 4-Amino-2-hydroxytoluene
12. 2-Methylresorcinol
13. 6-Amino-m-cresol
14. N,N-Diethyltoluene-2,5-diamine
15. 4-Amino-3-nitrophenol



Halogenated Positional Isomer Separations

Conditions

Column: ACE 5 C18
 ACE 5 C18-AR
 ACE 5 C18-PFP
Dimensions: 150 x 4.6 mm
Part Number: ACE-121-1546, ACE-129-1546, ACE-1210-1546
Mobile Phase: H₂O/MeOH (50:50 v/v)
Flow Rate: 1 mL/min
Injection: 5 µL
Temperature: Ambient
Detection: UV, 254 nm

Analytes

1. Acetophenone
2. o-Chloroacetophenone
3. m-Chloroacetophenone
4. p-Chloroacetophenone

