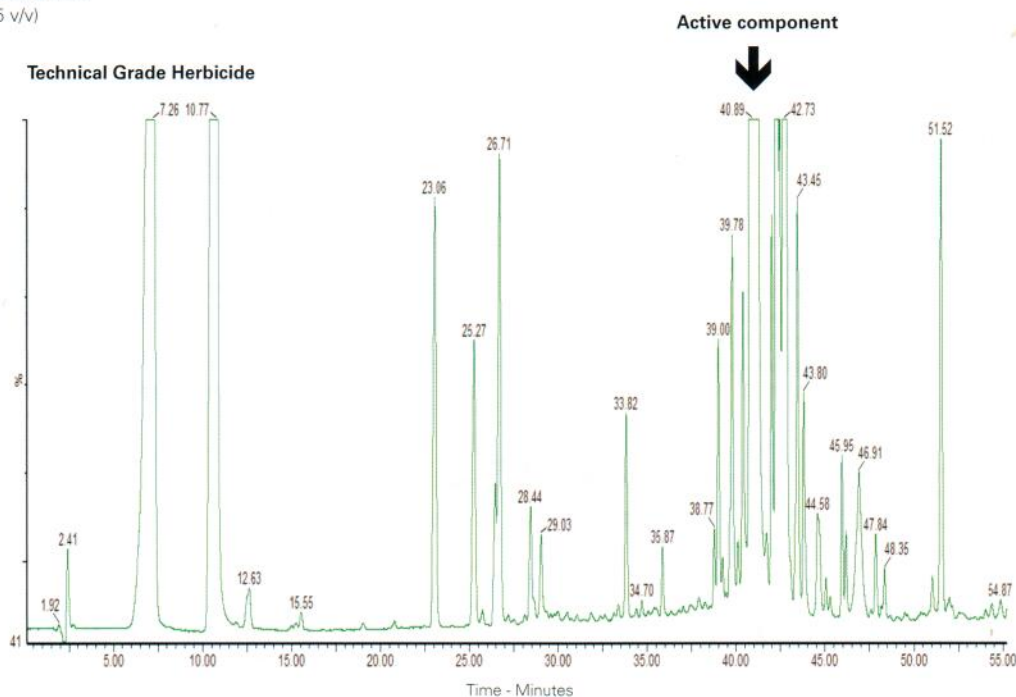


Conditions

Column: ACE UltraCore 2.5 SuperC18
 Dimensions: 150 x 4.6 mm
 Part Number: CORE-25A-1546U
 Mobile Phase: A: MeCN/H₂O/TFA (5:95:0.05 v/v/v)
 B: MeCN/TFA (99.9:0.05 v/v)

Gradient:	Time (mins)	%B
	0	10
	3	10
	35	100
	55	100
	56	10
	60	10

Flow Rate: 0.6 mL/min
 Injection: 10 µL
 Temperature: 25 °C
 Detection: UV, 240 nm



Hippuric Acid

Application #AN2760

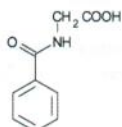
Conditions

Column: ACE 5 C18
 Dimensions: 150 x 4.6 mm
 Part Number: ACE-121-1546
 Mobile Phase: 10 mM KH₂PO₄ pH 3.5 in
 H₂O/MeCN (15:85 v/v)

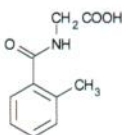
Flow Rate: 1 mL/min
 Temperature: Ambient
 Detection: UV, 254 nm

Analytes

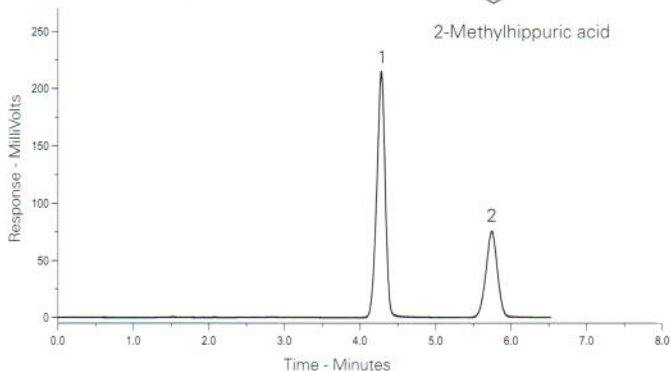
- Hippuric acid
- 2-Methylhippuric acid



Hippuric acid



2-Methylhippuric acid



Available from



tech
 batc
LCC Engineering & Trading GmbH
 Steinbruchstrasse 4, CH-4622 Egerkingen, Switzerland
 Tel.: +41 62 398 5271, Fax.: +41 62 398 5274
info@chemsupply.ch
www.chromatographyshop.com