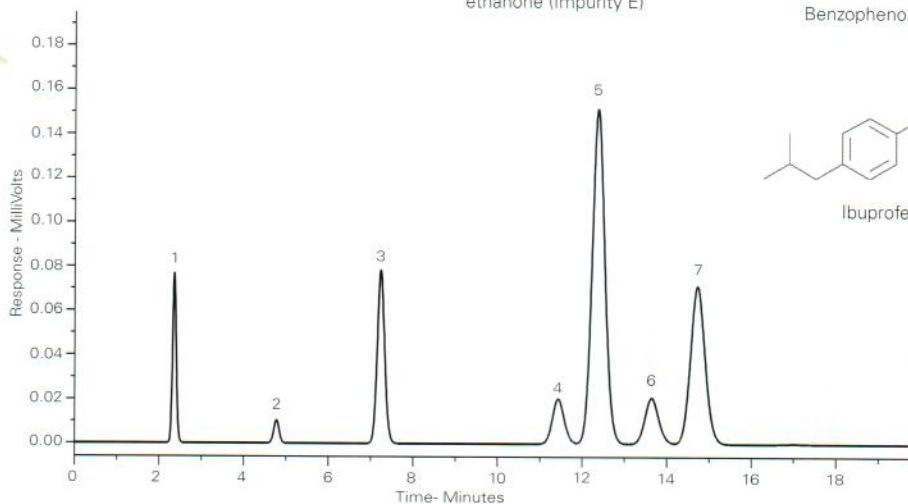
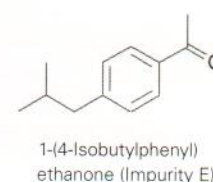
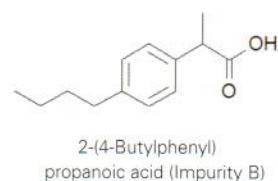
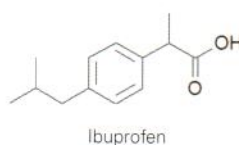
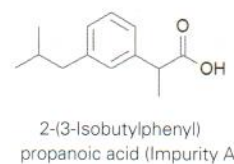
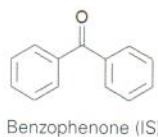
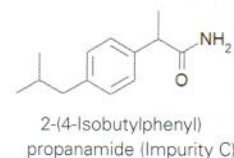
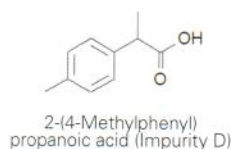


Conditions

Column: ACE 5 C18
Dimensions: 150 x 3.0 mm
Part Number: ACE-121-1503
Mobile Phase: 0.1% TFA in H₂O/MeCN (64:36 v/v)
Flow Rate: 1.5 mL/min
Temperature: 40 °C
Detection: UV, 214 nm

Analytes

- 2-(4-Methylphenyl) propanoic acid (Impurity D)
- 2-(4-Isobutylphenyl) propanamide (Impurity C)
- Benzophenone (IS)
- 2-(3-Isobutylphenyl) propanoic acid (Impurity A)
- Ibuprofen
- 2-(4-Butylphenyl) propanoic acid (Impurity B)
- 1-(4-Isobutylphenyl) ethanone (Impurity E)



Reproduced with permission of Boots Healthcare International, Nottingham, UK

Ibuprofen in Combination with Antihistamine and Decongestant

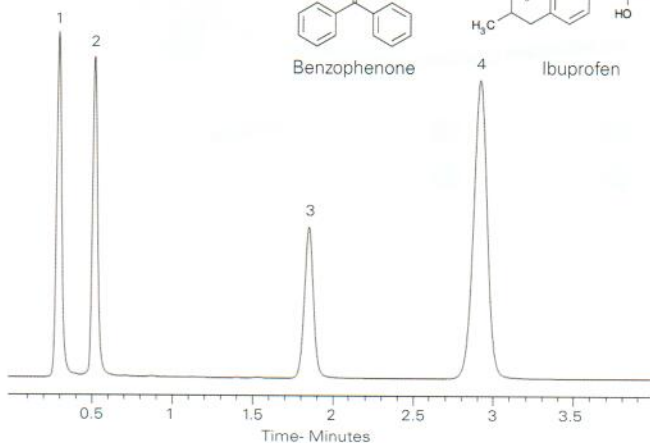
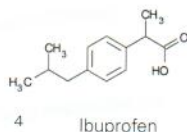
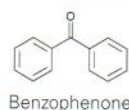
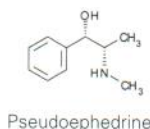
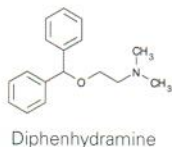
Application #AN2120

Conditions

Column: ACE Excel 3 C18-Amide
Dimensions: 150 x 4.6 mm
Part Number: EXL-1112-1546U
Mobile Phase: 0.01% potassium dihydrogen phosphate/MeCN (60:40 v/v)
Flow Rate: 0.6 mL/min
Injection: 0.5 µL
Temperature: 45 °C
Detection: UV, 214 nm

Analytes

- Diphenhydramine
- Pseudoephedrine
- Benzophenone
- Ibuprofen



Available from



LCC Engineering & Trading GmbH
 Steinbruchstrasse 4, CH-4622 Egerkingen, Switzerland
 Tel.: +41 62 398 5271, Fax.: +41 62 398 5274
info@chemsupply.ch
www.chromatographyshop.com