

Conditions

Column: ACE Excel 5 SuperC18
Dimensions: 150 x 4.6 mm
Part Number: EXL-1211-1546U
Mobile Phase: A: 0.1% ammonia in H₂O
 B: 0.1% ammonia in MeCN/H₂O (90:10 v/v)

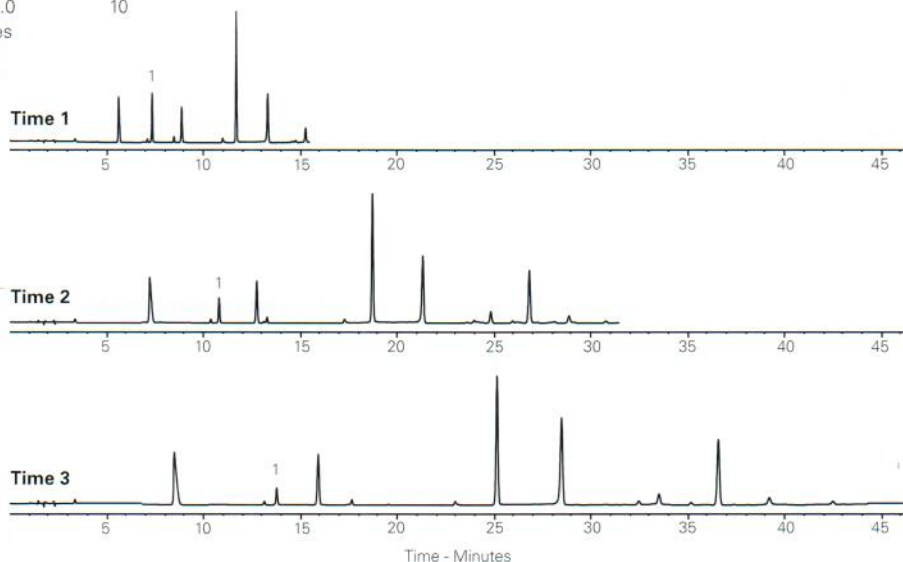
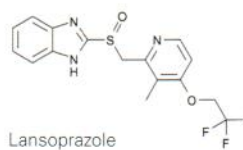
Gradient:	Time 1 (mins)	Time 2 (mins)	Time 3 (mins)	%B
	0.0	0.0	0.0	10
	15.0	30.0	45.0	90
	15.5	30.5	45.5	90
	18.0	33.0	48.0	10

Post time 10 minutes

Flow Rate: 1 mL/min
Injection: 5 µL
Temperature: 30 °C
Detection: UV, 280 nm

Analyte

1. Lansoprazole



Available from



LCC Engineering & Trading GmbH
 Steinbruchstrasse 4, CH-4622 Egerkingen, Switzerland
 Tel.: +41 62 398 5271, Fax.: +41 62 398 5274
info@chemsupply.ch
www.chromatographyshop.com

Lapatinib Anticancer Drug in Human Plasma by LC-MS/MS

Conditions

Column: ACE 5 C18
Dimensions: 100 x 4.6 mm
Part Number: ACE-121-1046
Mobile Phase: 10 mM ammonium formate
 pH 3.5/MeCN (10:90 v/v)

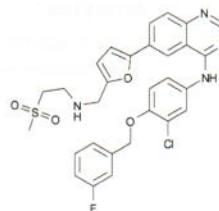
Flow Rate: 1 mL/min
Injection: 0.5 µL
Temperature: 40 °C

Detection: API 4000 triple quad MS
 Positive ion mode ESI
 Ion spray voltage: 5500 V
 Temperature: 400 °C

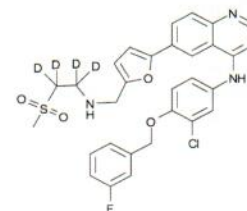
Sample: Extracted from 100 µL plasma using liquid-liquid extraction

Analytes

- Lapatinib
 (m/z 581.1 → 365.2)
 Concentration 1000 ng/mL
- Lapatinib-d4 (IS)
 (m/z 585.1 → 365.0)
 Concentration 100 ng/mL

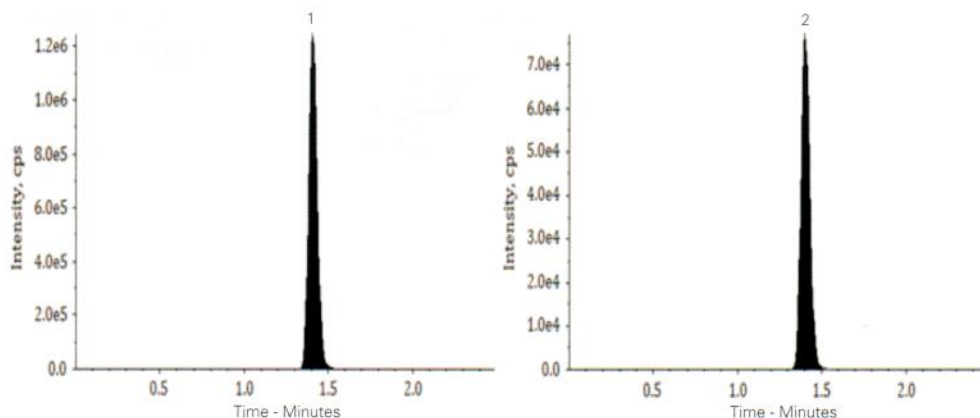


Lapatinib



Lapatinib-d4 (IS)

LLOQ 2.5 ng/mL
 LOD 1.0 ng/mL
 Method Linearity 2.5 – 2500 ng/mL



Reproduced with permission of Department of Chemistry, School of Science, Gujarat University, India