

Conditions

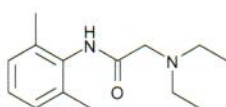
Column: ACE 3 C18
Dimensions: 100 x 3.0 mm
Part Number: ACE-111-1003
Mobile Phase: A: 0.1% formic acid in MeCN/H₂O (20:80 v/v)
 B: 0.1% formic acid in MeCN/H₂O (80:20 v/v)
Gradient:

Time (mins)	%B
0.0	20
1.0	20
3.0	80
4.5	80

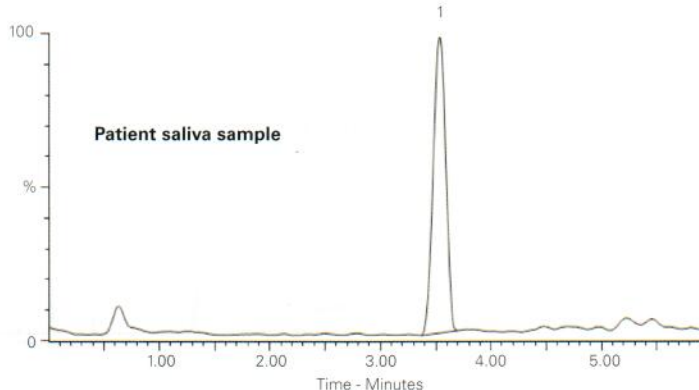
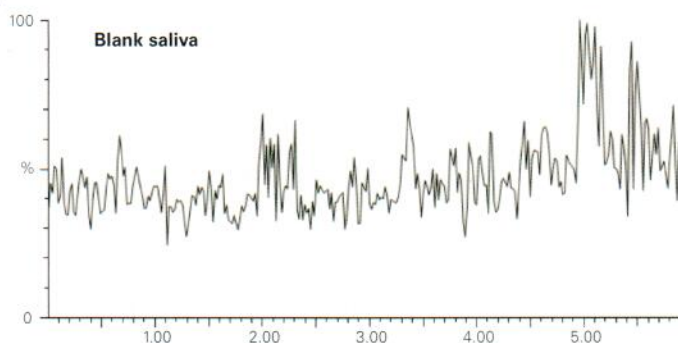
Flow Rate: 0.3 mL/min
Injection: 10 µL
Detection: Quattro-Micro triple quad MS
 Positive ion mode ESI

Analyte

1. Lidocaine
 (*m/z* 235 → 86)



1. Lidocaine



Saliva samples taken after "Emla 5 %" application to skin

Reproduced with permission of Department of Analytical Chemistry, Stockholm University, Sweden

Lincosamide Antibiotics

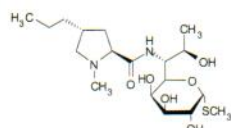
Application #AN2650

Conditions

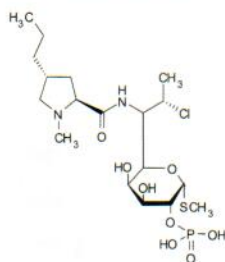
Column: ACE 5 C18
Dimensions: 250 x 4.6 mm
Part Number: ACE-121-2546
Mobile Phase: 0.02 M sodium phosphate dibasic pH 3.0/MeCN (70:30 v/v)
Flow Rate: 1 mL/min
Injection: 25 µL
Temperature: 25 °C
Detection: UV, 205 nm

Analytes

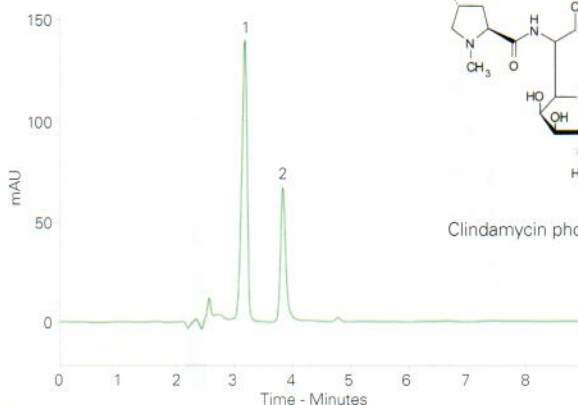
1. Lincomycin HCl
 2. Clindamycin phosphate



Lincomycin HCl



Clindamycin phosphate



Reproduced with permission of Department of Pharmacy, Faculty of Medicine and Surgery, University of Malta

Send us your application and receive a free ACE column

Your proven method will enable your chromatography colleagues to benefit and if we select your application for future publications we'll send you a FREE ACE analytical column of your choice.

Available from



LCC Engineering & Trading GmbH
 Steinbruchstrasse 4, CH-4622 Egerkingen, Switzerland
 Tel.: +41 62 398 5271, Fax.: +41 62 398 5274
info@chemsupply.ch
www.chromatographyshop.com