

## Conditions

**Column:** ACE 3 SIL  
**Dimensions:** 150 x 3.0 mm  
**Part Number:** ACE-117-1503  
**Mobile Phase:** A: IPA/MeCN (20:80 v/v)  
 B: IPA/0.02 M ammonium formate (20:80 v/v)  
**Gradient:**

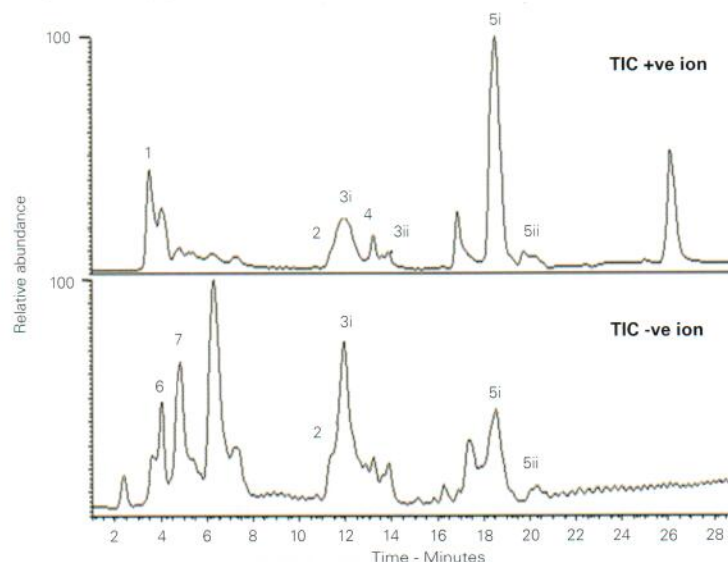
Time (mins)	%B
0.0	8
1.0	8
5.0	9
10.0	20
16.0	25
23.0	35
26.0	8

**Flow Rate:** 0.3 mL/min  
**Detection:** LTQ Orbitrap MS  
 Positive and negative ion mode

*Drosophila Melanogaster*

## Analytes

1. Triglyceride (TG)
2. Phosphoserine (PS)
- 3i. Lyso phosphoethanolamine (Lyso PE)
- 3ii. Lyso phosphoethanolamine (Lyso PE)
4. Sphingomyelin phosphoethanolamine (SMPE)
- 5i. Phosphatidylcholine (PC)
- 5ii. Lyso phosphatidylcholine (Lyso PC)
6. Glycerophosphoglycerol (GPG)
7. Phosphoinositol (PI)



Reproduced with permission of University of Strathclyde, Glasgow, UK

## Liquorice Extracts Fingerprint

Application #AN2090

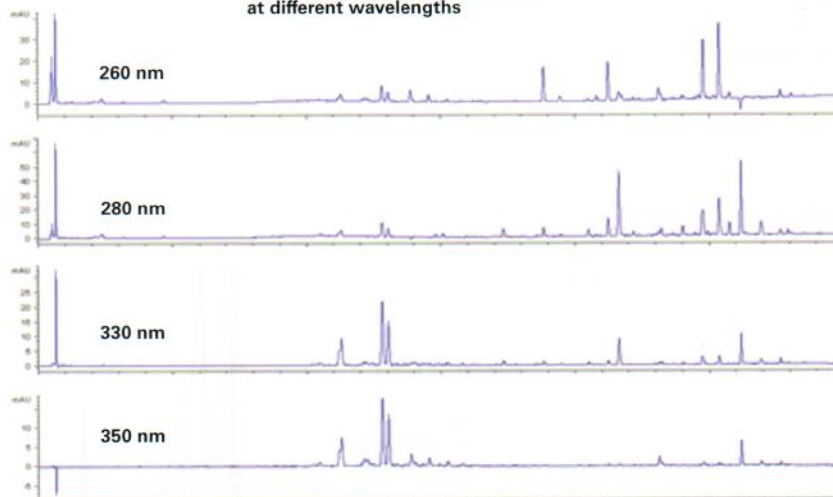
## Conditions

**Column:** ACE 3 C18-PPF  
**Dimensions:** 150 x 2.1 mm  
**Part Number:** ACE-1110-1502  
**Mobile Phase:** A: Ammonium acetate in H<sub>2</sub>O pH 4  
 B: MeOH  
**Gradient:**

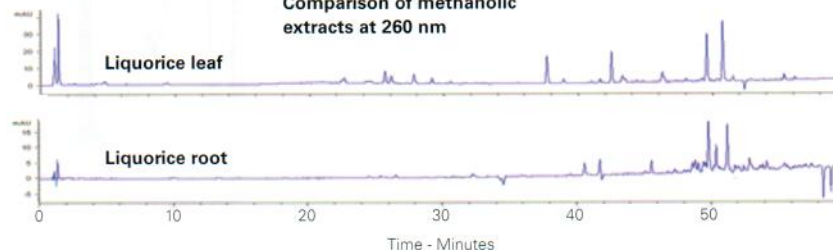
Time (mins)	%B
0	10
1	10
11	15
55	90
60	100

**Flow Rate:** 0.4 mL/min  
**Injection:** 2 µL  
**Temperature:** 40 °C  
**Detection:** UV, 260, 280, 330 and 350 nm  
**Sample:** Plant material ground to a fine powder in pestle and mortar. Powdered material extracted into methanol by ultrasonication for 30 minutes, followed by centrifugal filtration.

## Methanolic liquorice leaf extract at different wavelengths



## Comparison of methanolic extracts at 260 nm



Available from



**LCC Engineering & Trading GmbH**  
 Steinbruchstrasse 4, CH-4622 Egerkingen, Switzerland  
 Tel.: +41 62 398 5271, Fax.: +41 62 398 5274  
 info@chemsupply.ch  
 www.chromatographyshop.com

Reproduced with permission of Unilever, Colworth Science Park, UK