

Conditions

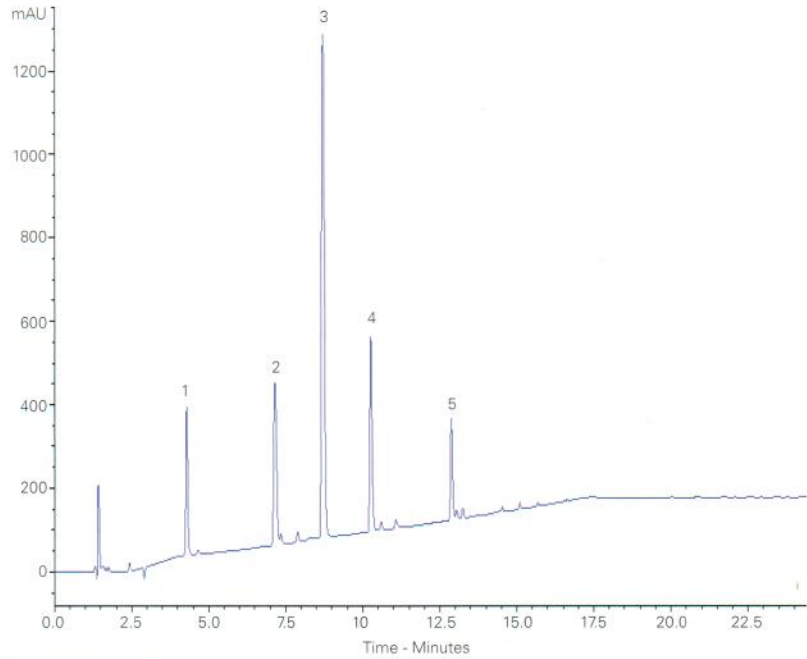
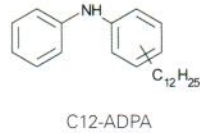
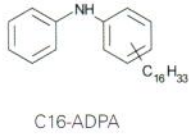
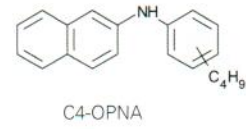
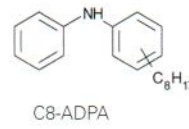
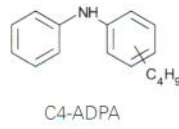
Column: ACE UltraCore 2.5 SuperC18
Dimensions: 150 x 4.6 mm
Part Number: CORE-25A-1546U
Mobile Phase: A: 0.1% formic acid in H₂O
 B: 0.1% formic acid in MeCN/IPA (1:2 v/v)
Gradient:

Time (mins)	%B
0.0	65.0
15.0	97.5
25.0	97.5
25.1	65.0

Flow Rate: 1 mL/min
Temperature: 60 °C
Detection: UV, 220 nm

Analytes

1. C4-ADPA
2. C8-ADPA
3. C4-OPNA
4. C12-ADPA
5. C16-ADPA



Reproduced with permission of Formulated Product Technology, BP Technology Centre, UK

Lurbinectedin in Plasma by LC-MS/MS

Conditions

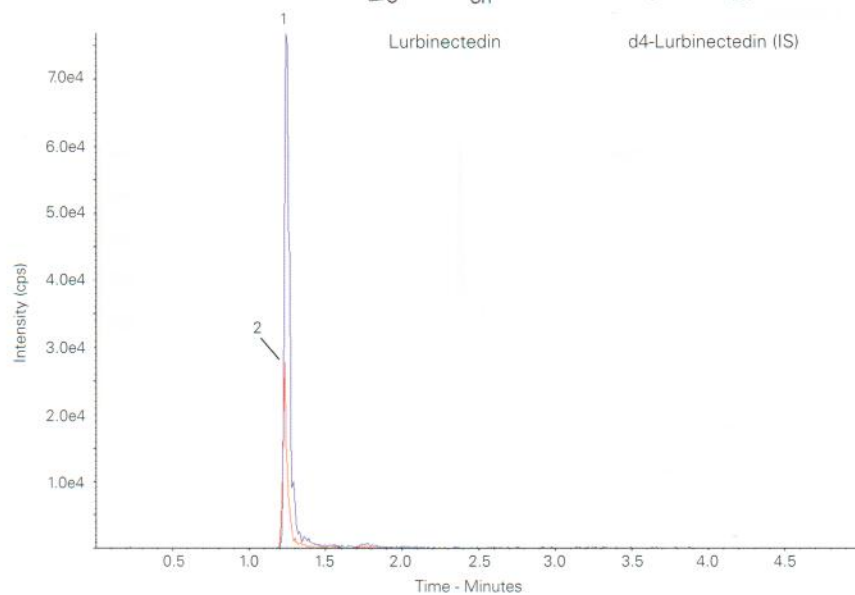
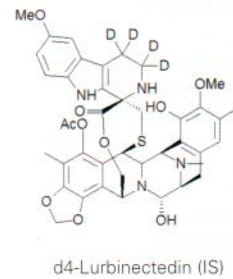
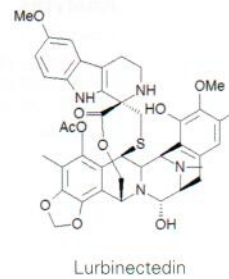
Column: ACE 3 C18-PFP
Dimensions: 30 x 2.1 mm
Part Number: ACE-1110-0302
Mobile Phase: A: 0.1% formic acid in H₂O
 B: 0.1% formic acid in MeCN
Gradient:

Time (mins)	%B
0.0	10
2.5	90
3.5	90
3.6	10
5.0	10

Flow Rate: 0.6 mL/min
Injection: 5 µL
Temperature: 50 °C
Detection: API 4000 triple quad
 TurbolonSpray, ESI positive ion mode
 Turbo Temperature: 650 °C
 Ion Spray Potential: 5000 V

Analytes

1. Lurbinectedin
(m/z 767.3 → 273.0)
(LLOQ 0.1 ng/mL)
2. d4-Lurbinectedin (IS)
(m/z 771.4 → 277.0)



Available from



LCC Engineering & Trading GmbH
 Steinbruchstrasse 4, CH-4622 Egerkingen, Switzerland
 Tel.: +41 62 398 5271, Fax.: +41 62 398 5274
info@chemsupply.ch
www.chromatographyshop.com

Reproduced with permission of PharmaMar S.A., Madrid, Spain