

Conditions

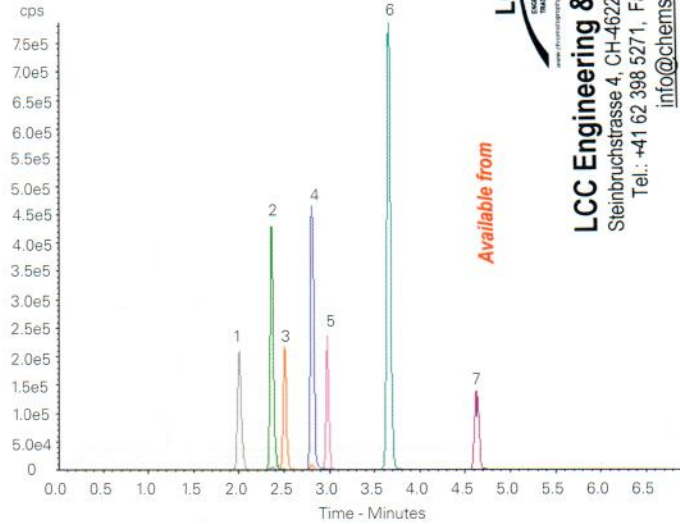
Column: ACE Excel 2 C18-AR
Dimensions: 50 x 2.1 mm
Part Number: EXL-109-0502U
Mobile Phase: A: 1 mM ammonium acetate, 0.5% acetic acid in H₂O
 B: 1 mM ammonium acetate, 0.5% acetic acid in 95% MeOH
Gradient:

Time (mins)	%B
0.0	40
1.0	40
2.4	60
6.8	87

Flow Rate: 0.6 mL/min
Injection: 2 µL
Temperature: 40 °C
Detection: AB SCIEX triple quad 5500
 Positive ESI mode
 Source temperature: 500 °C
 IonSpray voltage: 5500 V

Analytes

1. Aflatoxin G2 (*m/z* 331.1 → 313.1)
2. Aflatoxin G1 (*m/z* 329.0 → 243.1)
3. Aflatoxin B2 (*m/z* 315.1 → 287.0)
4. Aflatoxin B1 (*m/z* 313.1 → 285.0)
5. HT-2-toxin (*m/z* 442.2 → 263.1)
6. T-2-toxin (*m/z* 484.2 → 305.1)
7. Ochratoxin A (*m/z* 404.1 → 239.0)



LCC
 LCC Engineering & Trading GmbH
 Steinbruchstrasse 4, CH-4622 Egerkingen, Switzerland
 Tel.: +41 62 398 5271, Fax.: +41 62 398 5274
 info@chemsupply.ch
 www.chromatographyshop.com

Reproduced with permission of Biotage GB Ltd, UK

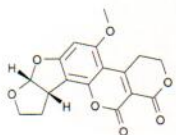
Mycotoxins/Aflatoxins from Peppers

Conditions

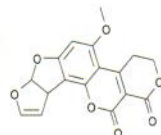
Column: ACE 3 C18-PFP
Dimensions: 150 x 4.6 mm
Part Number: ACE-1110-1546
Mobile Phase: H₂O/MeOH (60:40 v/v)
Flow Rate: 1 mL/min
Injection: 100 µL
Temperature: 45 °C
Detection: Fluorescence, λ_{Ex} 362 nm, λ_{Em} 425 nm

Analytes

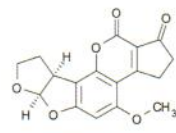
1. Aflatoxin G2
2. Aflatoxin G1
3. Aflatoxin B2
4. Aflatoxin B1



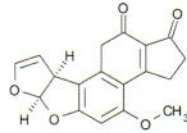
Aflatoxin G2



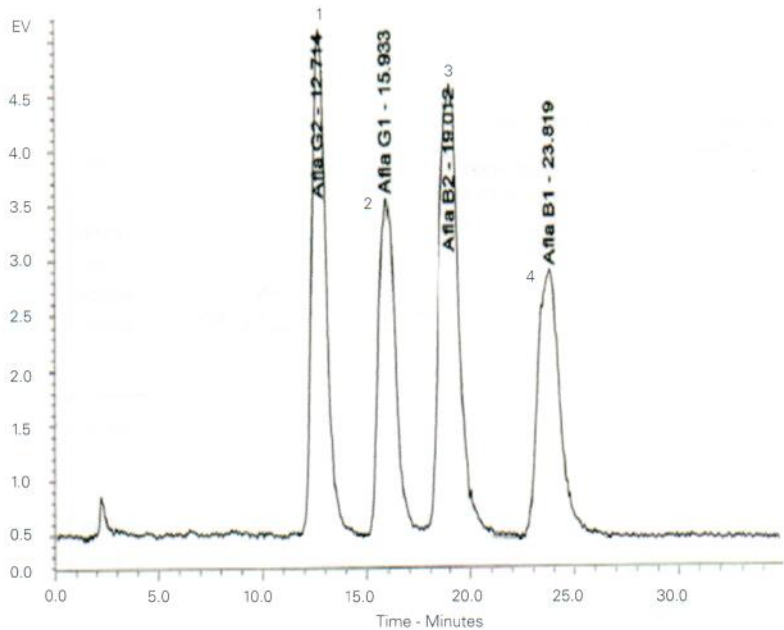
Aflatoxin G1



Aflatoxin B2



Aflatoxin B1



Reproduced with permission of Public Health Laboratory of Soria, Spain