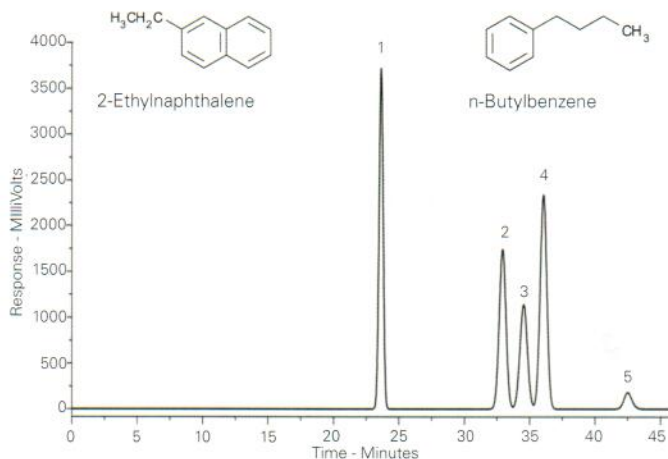
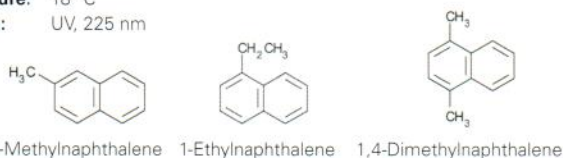


Conditions

Column: ACE 5 C18
Dimensions: 250 x 4.6 mm
Part Number: ACE-121-2546
Mobile Phase: MeCN/H₂O (51:49 v/v)
Flow Rate: 1.5 mL/min
Temperature: 18 °C
Detection: UV, 225 nm

Analytes

1. 2-Methylnaphthalene
2. 1-Ethyl-naphthalene
3. 1,4-Dimethylnaphthalene
4. 2-Ethyl-naphthalene
5. n-Butylbenzene



Reproduced with permission of Department of Environmental Chemistry, University of Glasgow, UK

Available from
LCC
 ENGINEERING & TRADING GMBH
LCC Engineering & Trading GmbH
 Steinbruchstrasse 4, CH-4622 Egerkingen, Switzerland
 Tel.: +41 62 398 5271, Fax.: +41 62 398 5274
info@chemsupply.ch
www.chromatographyshop.com

Neonicotinoids in Honey by LC-MS/MS

Conditions

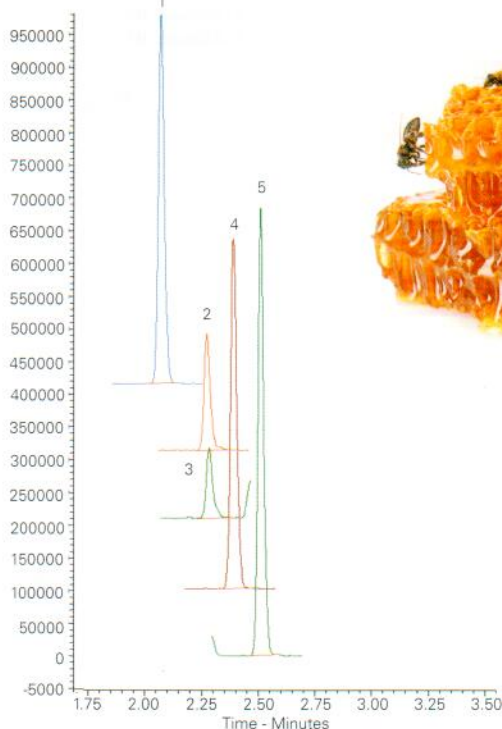
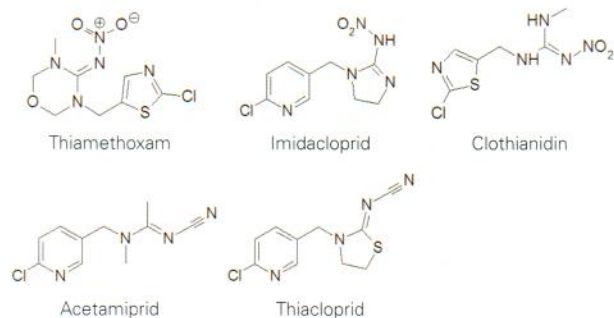
Column: ACE UltraCore 2.5 SuperC18
Dimensions: 100 x 2.1 mm
Part Number: CORE-25A-1002U
Mobile Phase: A: 0.05% ammonia in H₂O
 B: 0.05% ammonia in MeOH
Gradient:

Time (mins)	%B
0	5
3	100

Flow Rate: 0.6 mL/min
Injection: 1 µL (POISe mode)
Temperature: 30 °C
Detection: Shimadzu LCMS-8060
 Positive ion mode HESI
Sample: Honey spiked at 0.1 ppb (QuEChERS extract)

Analytes

1. Thiamethoxam (m/z 292 → 211)
2. Imidacloprid (m/z 256 → 175)
3. Clothianidin (m/z 250 → 169)
4. Acetamiprid (m/z 223 → 126)
5. Thiacloprid (m/z 253 → 126)



Reproduced with permission of Shimadzu, France