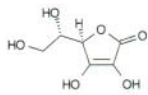


Conditions

Column: ACE 5 C18
Dimensions: 250 x 4.6 mm
Part Number: ACE-121-2546
Mobile Phase: 50 mM KH_2PO_4 pH 5.7 in
 $\text{H}_2\text{O}/\text{MeOH}$ (70:30 v/v)
Flow Rate: 1 mL/min
Temperature: 22 °C
Detection: UV, 220 nm

Analytes

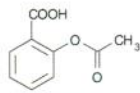
1. L-Ascorbic acid
2. Maleic acid
3. Acetylsalicylic acid
4. Benzoic acid
5. Salicylic acid



L-Ascorbic acid



Maleic acid



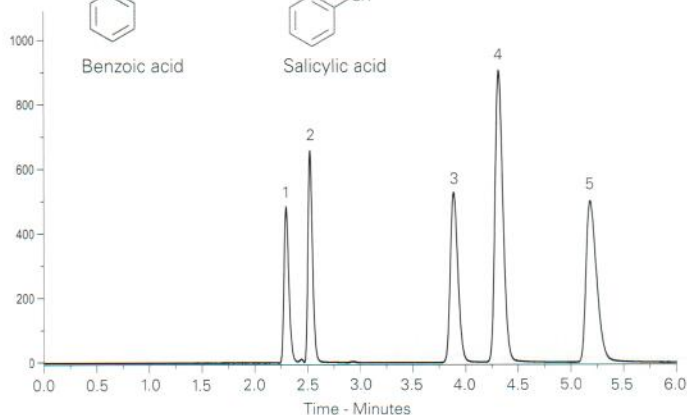
Acetylsalicylic acid



Benzoic acid



Salicylic acid



Available from



LCC Engineering & Trading GmbH

Steinbruchstrasse 4, CH-4622 Egerkingen, Switzerland

Tel.: +41 62 398 5271, Fax.: +41 62 398 5274

info@chemsupply.ch
www.chromatographyshop.com

Organic Acids – Fast Separation

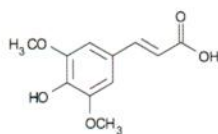
Application #AN2200

Conditions

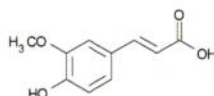
Column: ACE Excel 3 C18-Amide
 ACE Excel 1.7 C18-Amide
Dimensions: 250 x 2.1 mm, 50 x 3.0 mm
Part Number: 250 x 2.1 mm (EXL-1112-2502U),
 50 x 3 mm (EXL-1712-0503U)
Mobile Phase: 20 mM H_3PO_4 in
 $\text{MeOH}/\text{H}_2\text{O}$ (40:60 v/v)
Flow Rate: 0.21 mL/min (250 x 2.1 mm)
 0.8 mL/min (50 x 3.0 mm)
Injection: 5 μL (250 x 2.1 mm)
 2 μL (50 x 3.0 mm)
Temperature: 20 °C
Detection: UV, 210 nm

Analytes

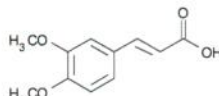
1. Sinapic acid
2. Ferulic acid
3. 3,4-Dimethoxycinnamic acid
4. Cinnamic acid
5. 4-Methoxycinnamic acid



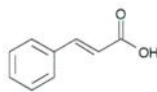
Sinapic acid



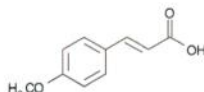
Ferulic acid



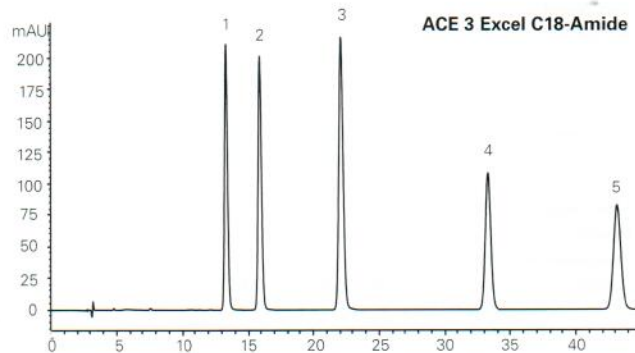
3,4-Dimethoxycinnamic acid



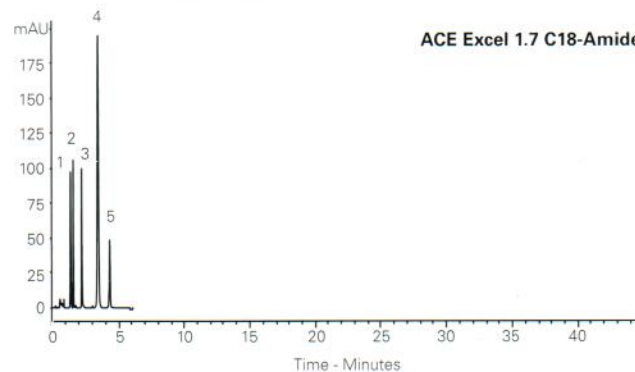
Cinnamic acid



4-Methoxycinnamic acid



ACE 3 Excel C18-Amide



ACE Excel 1.7 C18-Amide