

Oxymetazoline in Nasal Spray Formulation

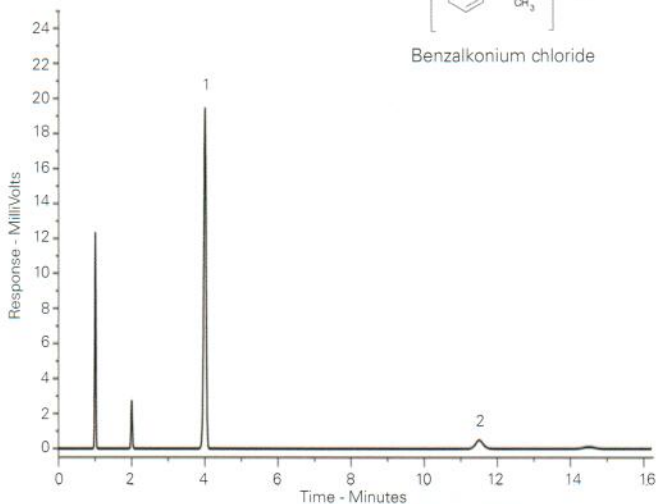
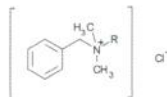
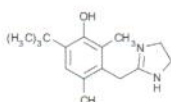
Application #AN3660

Conditions

Column: ACE 5 C18
Dimensions: 150 x 4.6 mm
Part Number: ACE-124-1546
Mobile Phase: aq. Na₂HPO₄ pH 7.0/MeCN (50:50 v/v)
Flow Rate: 1.5 mL/min
Temperature: 30 °C
Detection: UV, 214 nm

Analytes

1. Oxymetazoline
2. Benzalkonium chloride



Reproduced with permission of Thornton & Ross Ltd, Huddersfield, UK

Paclitaxel

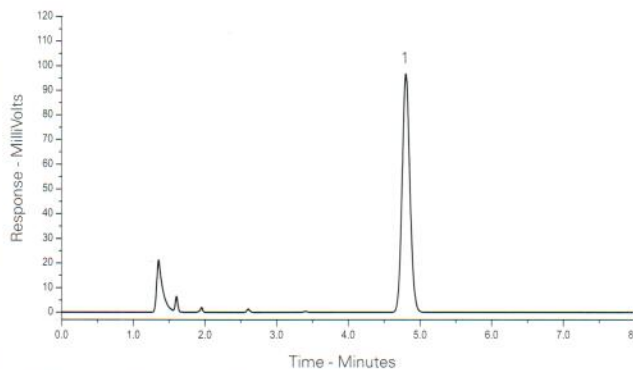
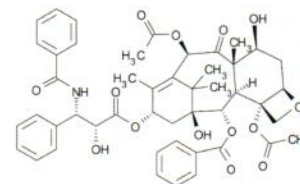
Application #AN3670

Conditions

Column: ACE 5 C18
Dimensions: 150 x 4.6 mm
Part Number: ACE-121-1546
Mobile Phase: H₂O/MeCN (45:55 v/v)
Flow Rate: 1 mL/min
Temperature: 40 °C
Detection: UV, 227 nm

Analyte

1. Paclitaxel



Reproduced with permission of Biointeractions Ltd, Reading, UK

Paeonia Lactiflora Extract HPLC Fingerprint

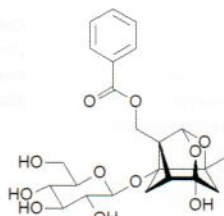
Application #AN3820

Conditions

Column: ACE 5 C18
Dimensions: 250 x 4.6 mm
Part Number: ACE-121-2546
Mobile Phase: A: 0.1% phosphoric acid in H₂O
B: MeCN

Analytes

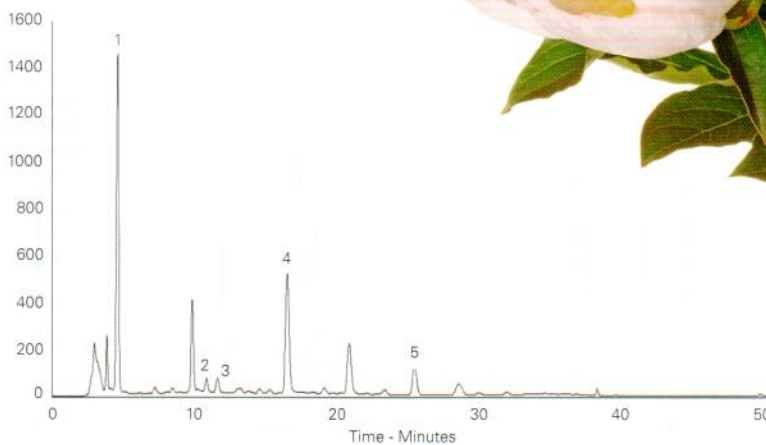
1. Gallic acid
2. Catechin hydrate
3. Methyl gallate
4. Paeoniflorin
5. Benzoic acid



Gradient:

Time (mins)	%B
0	10
5	15
25	22
45	70
46	80
50	80

Flow Rate: 1 mL/min
Injection: 20 µL
Temperature: 25 °C
Detection: UV, 254 nm
Sample: *P. lactiflora* root extracted with boiling water and polysaccharides removed by precipitation



Available from



LCC Engineering & Trading GmbH

Steinbruchstrasse 4, CH-4622 Egerkingen, Switzerland

Tel.: +41 62 393 5271, Fax.: +41 62 398 5274

info@chemsupply.ch

www.chromatographyshop.com

Choi H-J, Chung T-W, Park M-J, Lee KS, Yoon Y, Kim HS, Lee JH, Kwon S-M, Lee S-O, Kim K-J, Baek J-H, Ha K-T. (2016) *Paeonia lactiflora* Enhances the Adhesion of Trophoblast to the Endometrium via Induction of Leukemia Inhibitory Factor Expression. PLoS ONE 11(2): e0148232. doi:10.1371/journal.pone.0148232