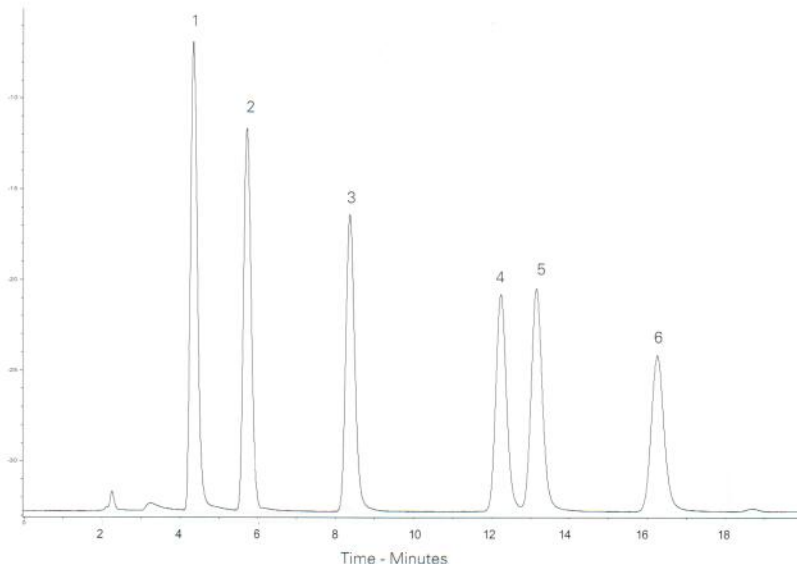
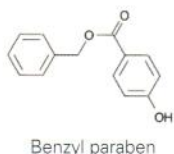
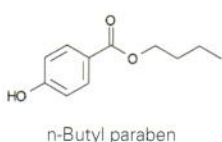
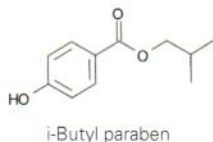
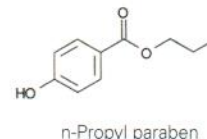
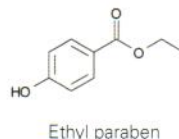
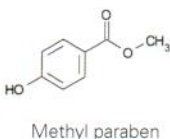


Conditions

Column: ACE 3 Phenyl
Dimensions: 150 x 2.1 mm
Part Number: ACE-115-1502
Mobile Phase: 25 mM ammonium acetate pH 6.8 in H₂O/MeOH (50:50 v/v)
Flow Rate: 0.2 mL/min
Injection: 2 µL
Temperature: 40 °C
Detection: UV, 240 nm

Analytes

1. Methyl paraben
2. Ethyl paraben
3. n-Propyl paraben
4. i-Butyl paraben
5. n-Butyl paraben
6. Benzyl paraben



Reproduced with permission of The Chemical Analysis Facility, University of Reading

Paracetamol and Related Compounds

Application #AN1260

Conditions

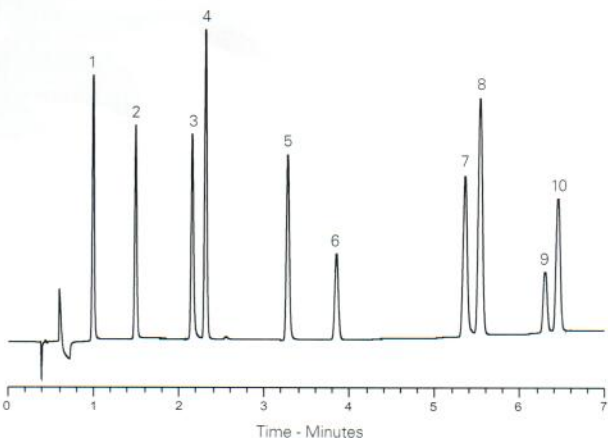
Column: ACE Excel 2 C18-PFP
Dimensions: 100 x 3.0 mm
Part Number: EXL-1010-1003U
Mobile Phase: A: 20 mM ammonium acetate pH 6.0 in H₂O
 B: 20 mM ammonium acetate pH 6.0 in MeOH/H₂O (90:10 v/v)
Gradient:

Time (mins)	%B
0.0	6
5.5	63

Flow Rate: 1.2 mL/min
Injection: 2 µL
Temperature: 27 °C
Detection: UV, 220 nm

Analytes

1. 4-Aminophenol
2. Hydroquinone
3. 2-Aminophenol
4. Paracetamol
5. 2-Acetamidophenol
6. Phenol
7. 4-Nitrophenol
8. 2-Nitrophenol
9. 4-Chloroacetanilide
10. 4-Chlorophenol



Paracetamol and Related Substances – Fast Analysis (I)

Application #AN2210

Conditions

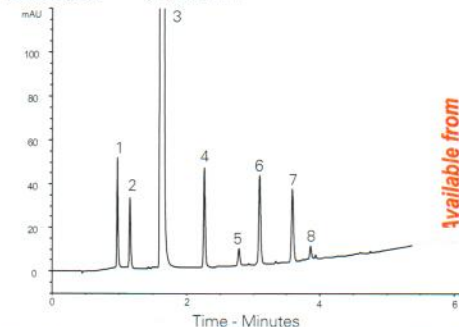
Column: ACE Excel 1.7 C18
Dimensions: 50 x 3.0 mm
Part Number: EXL-171-0503U
Mobile Phase: A: 10 mM ammonium acetate pH 6.0 in H₂O
 B: 10 mM ammonium acetate pH 6.0 in MeOH/H₂O (90:10 v/v)
Gradient:

Time (mins)	%B
0.00	5
0.08	5
5.08	95
6.76	95
7.09	5
10.00	5

Flow Rate: 0.51 mL/min
Injection: 0.7 µL
Temperature: 40 °C
Detection: UV, 230 nm

Analytes

1. 4-Aminophenol
2. Hydroquinone
3. Paracetamol
4. 2-Acetamidophenol
5. Phenol
6. 4-Nitrophenol
7. 2-Nitrophenol
8. 4-Chloroacetanilide



For enhanced resolution of paracetamol and related compounds, see AN2220.



Available from

LCC Engineering & Trading GmbH
 Steinbruchstrasse 4, CH-4622 Egerkingen, Switzerland
 Tel.: +41 62 398 5271, Fax.: +41 62 398 5274
 info@chemsupply.ch
 www.chromatographyshop.com