

Conditions

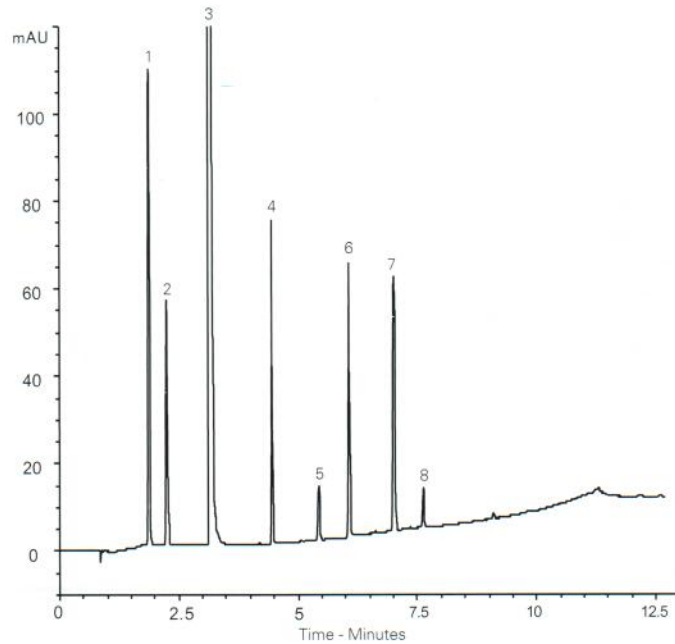
Column: ACE Excel 1.7 C18
Dimensions: 100 x 3.0 mm
Part Number: EXL-171-1003U
Mobile Phase: A: 10 mM ammonium acetate pH 6.0 in H₂O
 B: 10 mM ammonium acetate pH 6.0 in MeOH/H₂O (90:10 v/v)
Gradient:

Time (mins)	%B
0.00	5
0.21	5
10.23	95
13.56	95
14.16	5
20.24	5

Flow Rate: 0.51 mL/min
Injection: 1.4 µL
Temperature: 40 °C
Detection: UV, 230 nm

Analytes

1. 4-Aminophenol
2. Hydroquinone
3. Paracetamol
4. 2-Acetamidophenol
5. Phenol
6. 4-Nitrophenol
7. 2-Nitrophenol
8. 4-Chloroacetanilide



For enhanced speed of paracetamol and related compounds, see AN2210.

Paracetamol and Related Substances – Phase Selectivity

Conditions

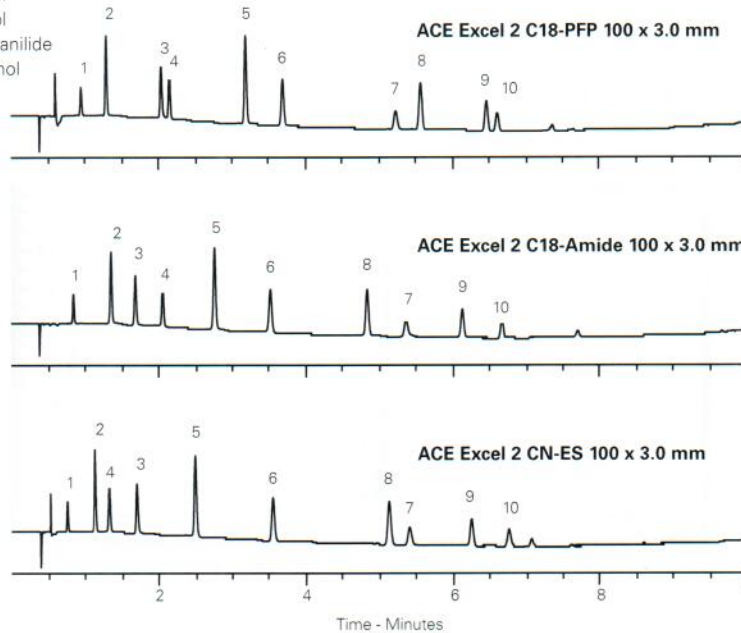
Column: ACE Excel 2 C18-PFP, ACE Excel 2 C18-Amide, ACE Excel 2 CN-ES
Dimensions: 100 x 3.0 mm
Part Number: EXL-1010-1003U, EXL-1012-1003U, EXL-1013-1003U
Mobile Phase: A: 20 mM ammonium acetate pH 6.0 in H₂O
 B: 20 mM ammonium acetate pH 6.0 in MeOH/H₂O (90:10 v/v)
Gradient:

Time (mins)	%B
0.0	5
10.0	95
12.5	95
13.0	5

Flow Rate: 1.2 mL/min
Injection: 2 µL
Temperature: 40 °C
Detection: UV, 210 nm

Analytes

1. 4-Aminophenol
2. Hydroquinone
3. 2-Aminophenol
4. Paracetamol
5. 2-Acetamidophenol
6. Phenol
7. 4-Nitrophenol
8. 2-Nitrophenol
9. 4-Chloroacetanilide
10. 4-Chlorophenol



Available from



LCC Engineering & Trading GmbH
 Steinbruchstrasse 4, CH-4622 Egerkingen, Switzerland
 Tel.: +41 62 398 5271, Fax.: +41 62 398 5274
info@chemsupply.ch
www.chromatographyshop.com