

**Conditions**

**Column:** ACE 5 C18-300; ACE 5 C8-300; ACE 5 C4-300;  
ACE 5 Phenyl-300; ACE 5 CN-300  
**Dimensions:** 250 x 4.6 mm  
**Part Number:** ACE-221-2546, ACE-222-2546, ACE-223-2546,  
ACE-225-2546, ACE-224-2546  
**Mobile Phase:** A: 0.1% TFA or 0.1% formic acid in H<sub>2</sub>O  
B: MeCN  
**Gradient:**

Time (mins)	%B
0.0	10
25.0	40

  
**Flow Rate:** 1 mL/min  
**Temperature:** Ambient  
**Detection:** UV, 220 nm

**Analytes**

1. Gly-Tyr (MW: 238.34)
2. Val-Tyr-Val (MW: 379.45)
3. Methionine enkephalin (MW: 573.67)
4. Angiotensin II (MW: 1046.18)
5. Leucine enkephalin (MW: 555.62)

Available from



**LCC Engineering & Trading GmbH**

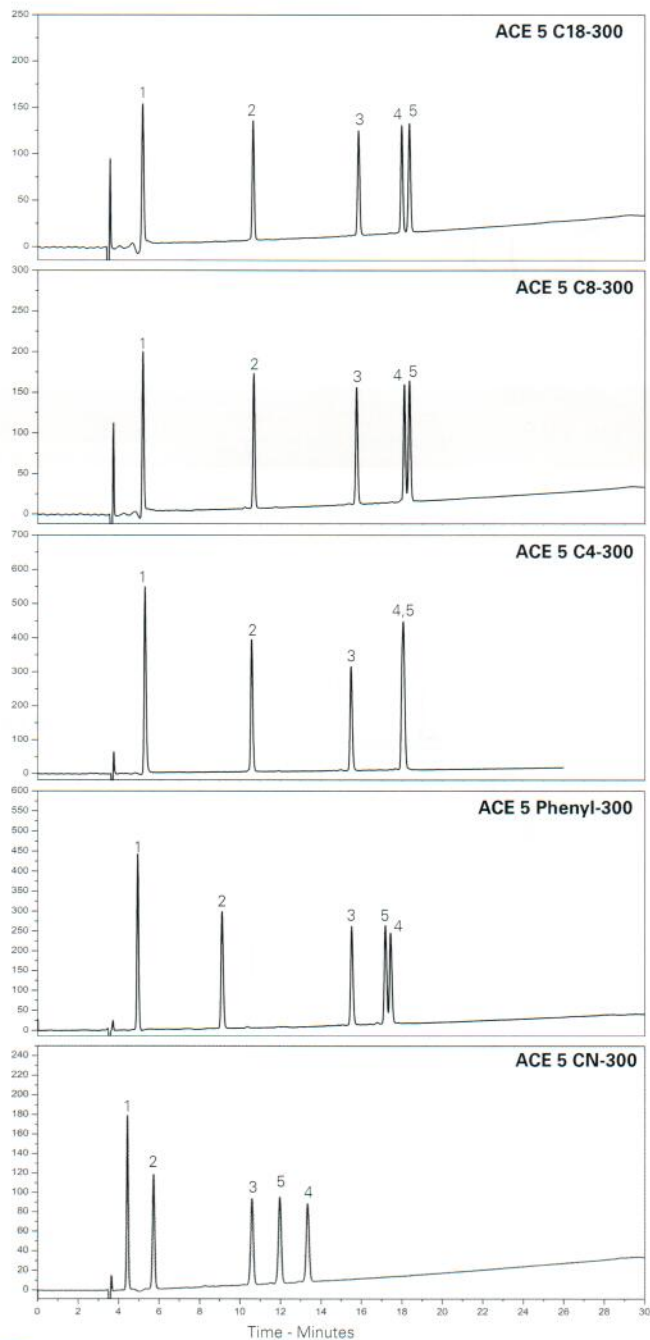
Steinbruchstrasse 4, CH-4622 Egerkingen, Switzerland

Tel.: +41 62 398 5271, Fax.: +41 62 398 5274

[info@chemsupply.ch](mailto:info@chemsupply.ch)

[www.chromatographyshop.com](http://www.chromatographyshop.com)

0.1% TFA



0.1% HCOOH

