

Paroxetine and Desfluoro Analogue

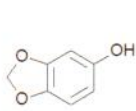
Application #AN3890

Conditions

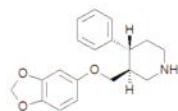
Column: ACE 5 CN
Dimensions: 150 x 4.6 mm
Part Number: ACE-124-1546
Mobile Phase: 20 mM ammonium formate
 pH 3.0/MeOH (60:40 v/v)
Flow Rate: 2 mL/min
Injection: 20 µL
Temperature: Ambient
Detection: UV, 295 nm

Analytes

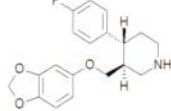
1. Sesamol
2. Desfluoroparoxetine
3. Paroxetine



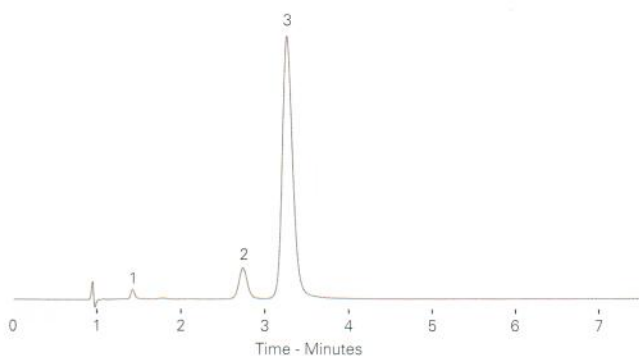
Sesamol



Desfluoroparoxetine



Paroxetine



Reproduced with permission of School of Pharmacy, University of Sunderland, UK

Peptide Test Mix

Application #AN3930

Conditions

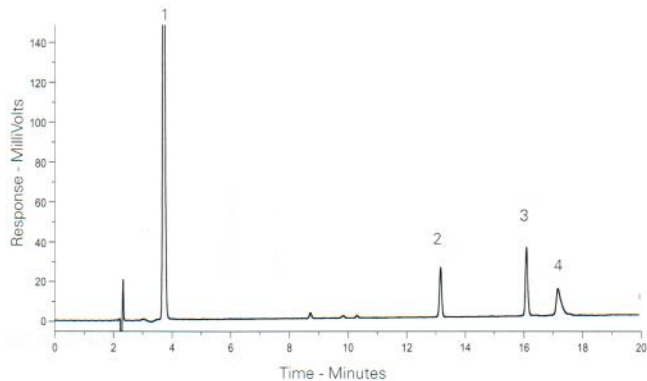
Column: ACE 5 C18-300
Dimensions: 250 x 4.6 mm
Part Number: ACE-221-2546
Mobile Phase: A: 0.1% TFA in H₂O
 B: 0.1% TFA in MeCN
Gradient:

Time (mins)	%B
0	10
25	40

Flow Rate: 2 mL/min
Injection: 5 µL
Temperature: Ambient
Detection: UV, 220 nm

Analytes

1. Gly-Tyr (MW: 238.34)
2. Oxytocin (MW: 1007)
3. Angiotensin II (MW: 1046.18)
4. Neurotensin (MW: 1672.92)



Peptides – Varying pH

Application #AN3990

Conditions

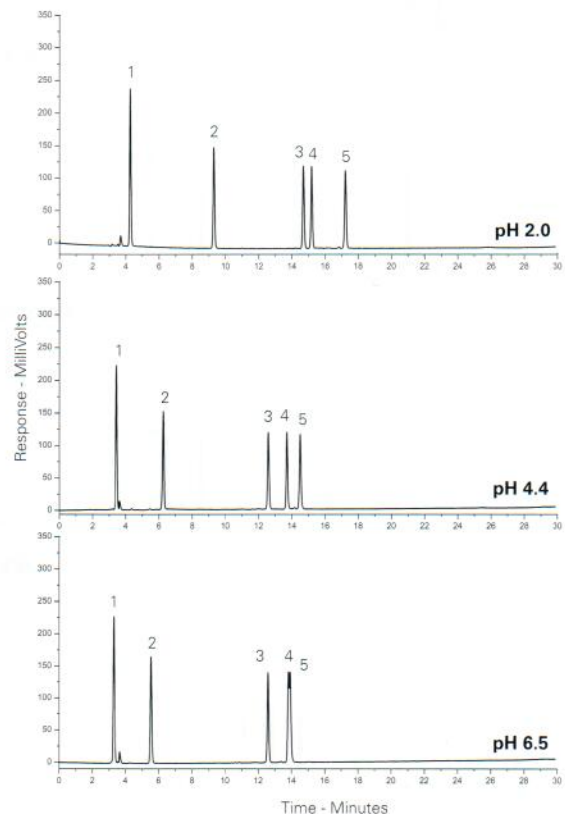
Column: ACE 5 C18-300
Dimensions: 250 x 4.6 mm
Part Number: ACE-221-2546
Mobile Phase: A: 20 mM KH₂PO₄ in
 H₂O (pH as indicated)
 B: MeCN
Gradient:

Time (mins)	%B
0	10
25	40

Flow Rate: 1 mL/min
Temperature: Ambient
Detection: UV, 220 nm

Analytes

1. Gly-Tyr (MW: 238.34)
2. Val-Tyr-Val (MW: 379.45)
3. Methionine enkephalin (MW: 573.67)
4. Angiotensin II (MW: 1046.18)
5. Leucine enkephalin (MW: 555.62)



Available from



LCC Engineering & Trading GmbH
 Steinbruchstrasse 4, CH-4622 Egerkingen, Switzerland
 Tel.: +41 62 398 5271, Fax.: +41 62 398 5274
info@chemsupply.ch
www.chromatographyshop.com